

CASE STUDY

St. Paul Public School
Saint Paul, MN

TIME SAVINGS
27 hours

TOTAL SAVINGS
\$1,860

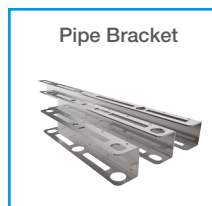
The contractor installed runs of 3" conduit throughout the building and into the new addition.

Project Summary

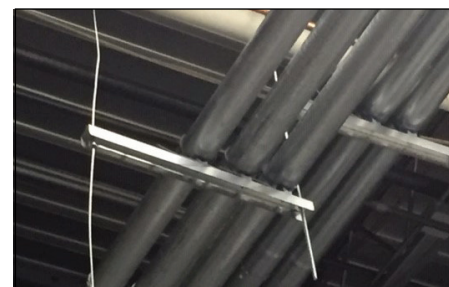
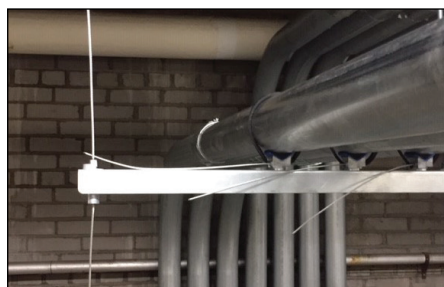
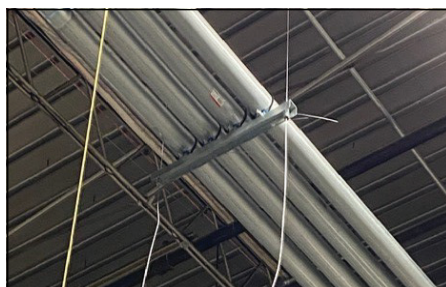
Building type	School
Contractor	Muska Electric
Building structure	Metal Deck
Services	Conduit

Featured Products

Pipe Bracket



UniGrip



"Any contractor worried about swaying needs to try Grippler Hangers themselves before assuming. This worked amazing... Grippler sells itself!"- Terry St. Martin, Foreman, Muska Electric Inc.

COST SAVING SUMMARY

	Grippler solution	Traditional method
Overview	Cable Strut & UniGrip	3/8 threaded rod, nuts, washers & Unistrut
Material cost	\$1,900	\$1,600
Installation time	20 hours	47 hours
Labor rate (per hour)	\$80/hour	\$80/hour
Total labor cost	\$1,600	\$3,760
Total Cost	\$3,500	\$5,360



PROJECT DETAILS

The Saint Paul Public Schools Facilities Building project for Muska Electric involved runs of 3" conduit throughout the building and into the new addition.

The traditional method of suspending the conduit would have involved cutting and measuring lengths of strut and threaded rod. As an alternative, Grippler products were chosen.

Specifically Grippler's Pipe Brackets and associated Twist Clamps were used to attach

the conduit runs, and Grippler's UniGrip Cable Hangers were used to suspend the brackets. And once suspended, the UniGrip Cable Hangers allowed a simple way to level the installation.

According to Terry St. Martin, the foreman, "Hands down, no brainer. Grippler is a time saver. Even comparing the cost to using strut and rod, it was so close and we didn't have to cut anything. It made no sense to do it the old way."

