



Vineyards, Orchards & Wire Fence Solutions

Trellising, Bracing and Fencing





Contents

Applications

| | | |
|-------------------------------|------|----|
| Vineyard Trellising Solutions | page | 6 |
| Orchard Trellising Solutions | page | 8 |
| Wire Fence Solutions | page | 10 |

Products

| | | |
|------------------------------|------|----|
| Gripple Plus Range | page | 12 |
| GP No. 1 & No. 2 | page | 13 |
| Starter Pack | page | 14 |
| VIT-S & VIT-S Kit | page | 15 |
| GPAK Plus M | page | 17 |
| GPAK Plus W & GPAK 4 Classic | page | 18 |
| APEX™ | page | 19 |
| APAK Plus M & APAK Plus W | page | 20 |
| DPAK | page | 22 |
| Dynamic Range | page | 23 |
| Concrete Post Kit | page | 24 |
| GP90 | page | 25 |
| Barbed | page | 26 |
| T-Clip | page | 27 |
| FPAK | page | 28 |
| Fencing Pin Kit | page | 29 |

Accessories

| | | |
|-------------------------------|------|----|
| Anchoring Tools & Accessories | page | 30 |
|-------------------------------|------|----|

Technical Advice & Installation

| | | |
|---------------------------------|------|----|
| Technical Advice & Installation | page | 33 |
|---------------------------------|------|----|

About Gripple

As market leader in the joining and tensioning of wire, Gripple is renowned for providing innovative, cost-effective solutions for trellising, bracing and fencing applications. Gripple products replace traditional methods, generating time and labour savings. Our range of products work with a wide variety of wires across all types of applications.



Gripple Europe, Obernai, France



Gripple headquarters, Sheffield, UK



Gripple headquarters, Sheffield, UK

Why Gripple?

We Save Time & Money

The Gripple product range is innovatively designed and highly engineered with simplicity in mind. By delivering a significantly simpler system compared to traditional methods, and eradicating the need to tie and knot wires, we vastly reduce labour and installation times.

We Provide Complete Solutions

Our systems have been carefully developed to ensure we are able to provide solutions for a wide range of applications. One of the many strengths of our patented pushfit technology is its versatility; allowing us to transform all forms of fencing, bracing, trellising and anchoring applications into simple, labour saving tasks.

We are Constantly Striving to Deliver Better Solutions

Our business is built on a desire to continuously innovate and bring better products to market. Our in-house Ideas and Innovation team ensure we are agile in our delivery of new solutions, from concept to creation. They are also perceptive to our customers' ideas, so get in touch, they love a challenge.

We offer Strong, Long-lasting Products

By eradicating the need to knot and tie wires, the integral strength of your wire is never compromised. The selection of tools available ensure installation and maintenance are hassle free, and our patented push-fit technology means there is peace of mind wherever there is Gripple.

We are Market Leaders

We have been supplying solutions in Viticulture, Orchards & Fencing for 30 years and our products are in use across the globe. We're proud of what we offer because it's simple, successful and trusted.

Vineyard Trellising Solutions

VIT-S
Page 15

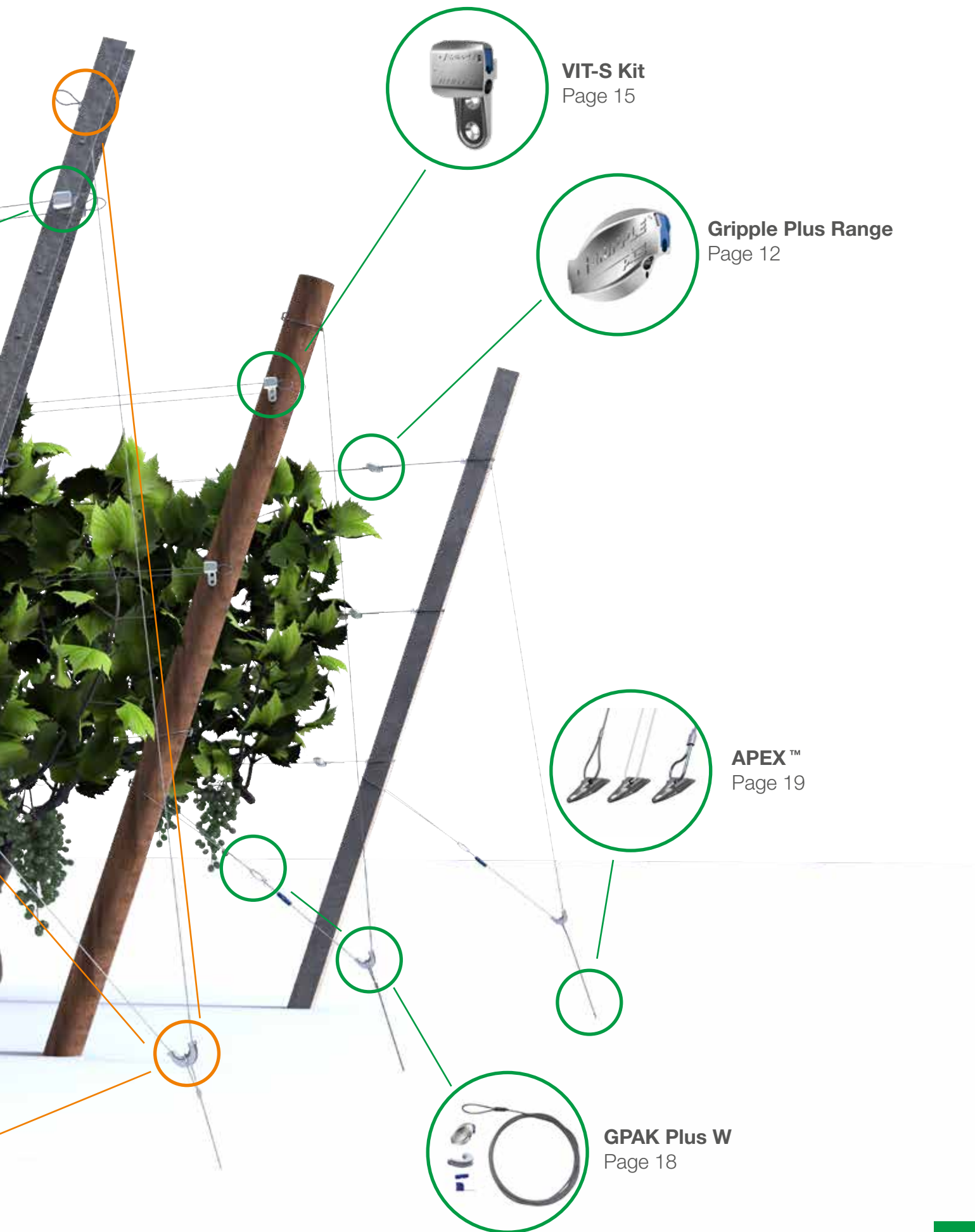


GP No.1 & No.2
Page 13



GPAK Plus M
Page 17





VIT-S Kit
Page 15

Gripple Plus Range
Page 12

APEX™
Page 19

GPAK Plus W
Page 18

Orchard Trellising Solutions

Dynamic Range
Page 23



Grippler Plus Range
Page 12





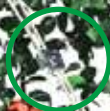
Tools & Accessories
Page 30



Concrete Post Kit
Page 24

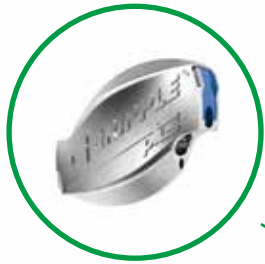


DPAK
Page 22

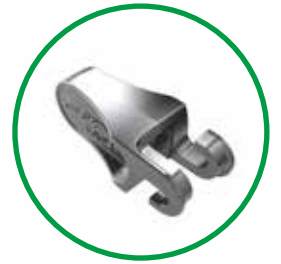


APEX™
Page 19

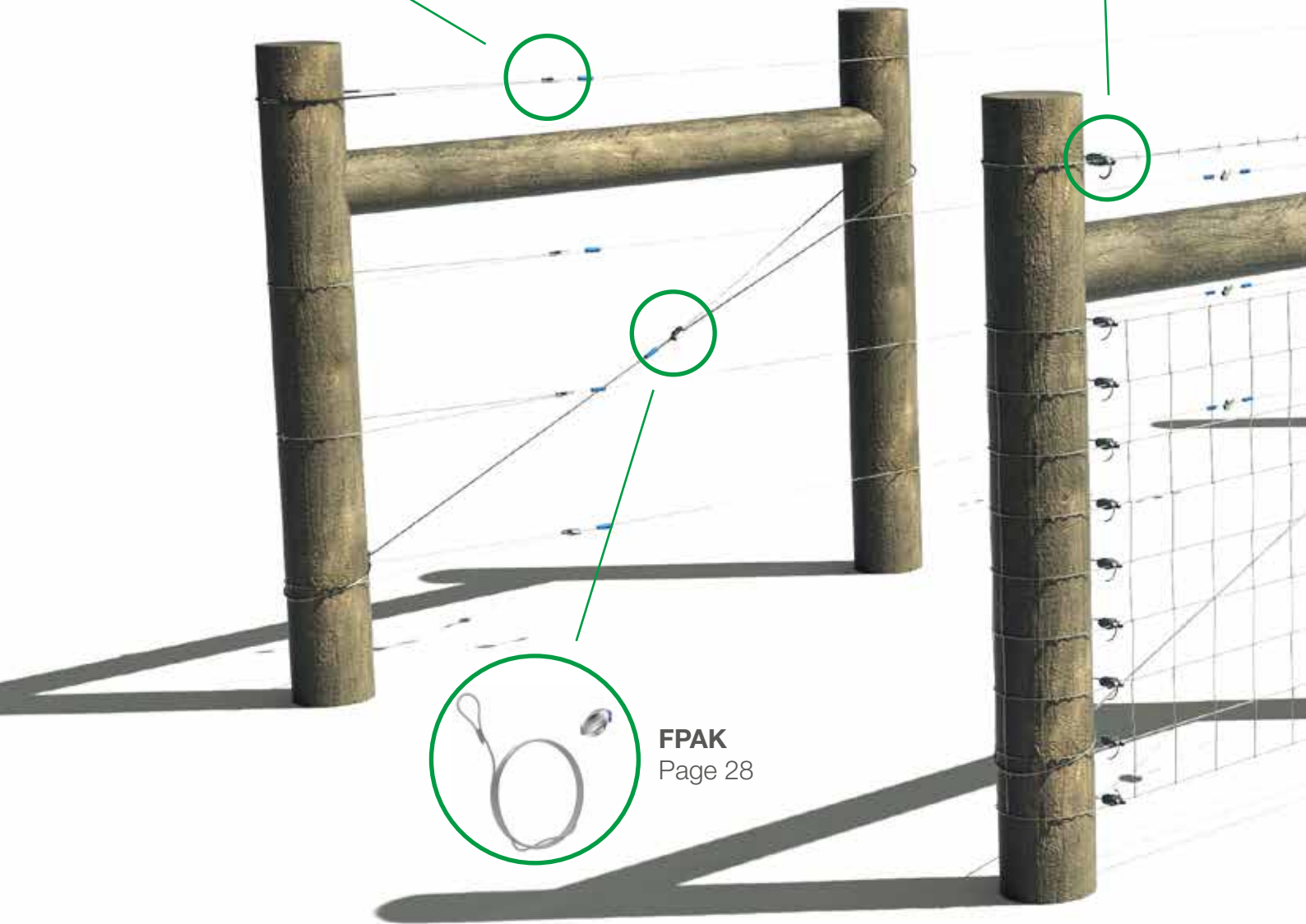
Wire Fence Solutions



Gripple Plus Range
Page 12



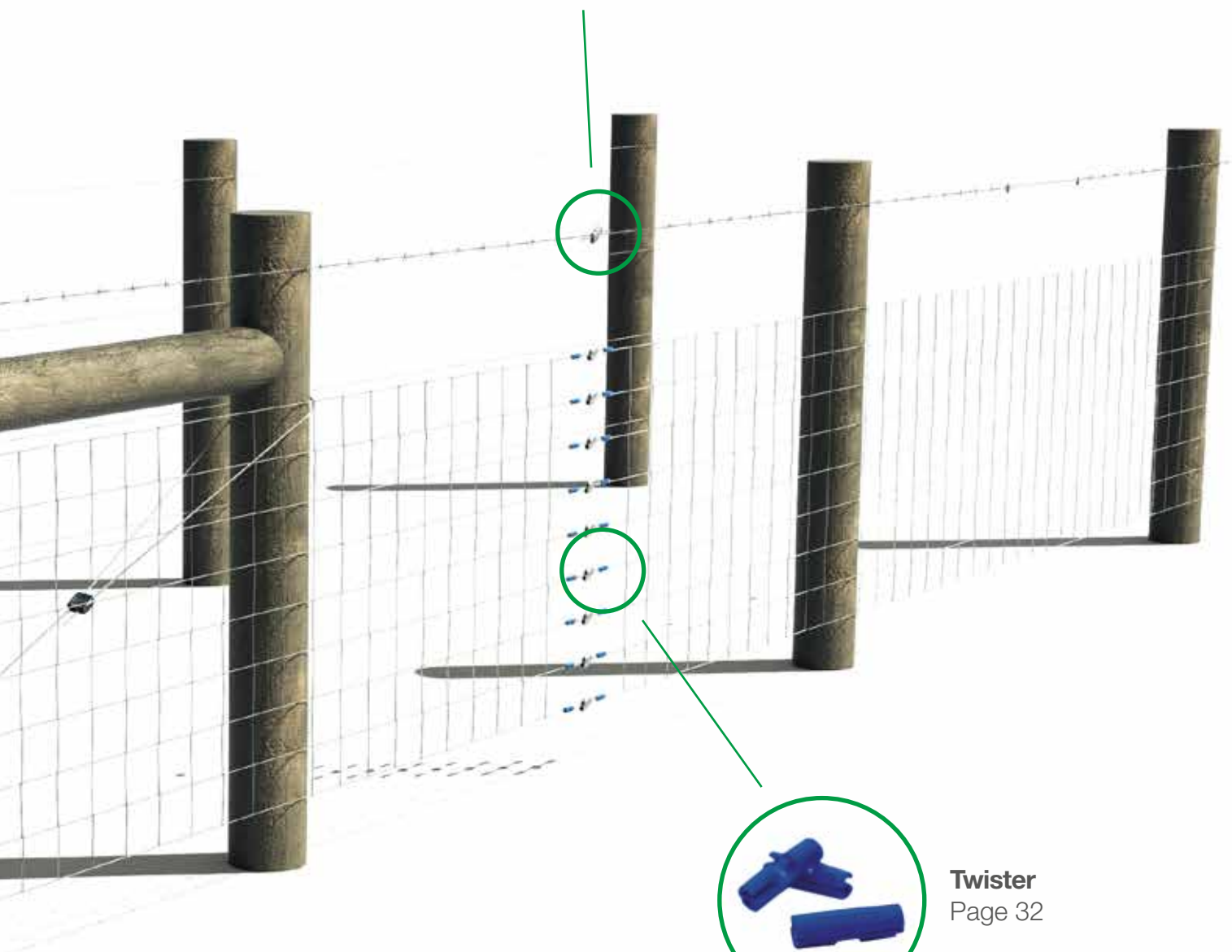
T-Clip
Page 27



FPAK
Page 28



Barbed
Page 26



Twister
Page 32

Gripple Plus Range

The Gripple Plus range of wire joiners and tensioners is suitable for all trellis applications.

- Join and tension in one
- Eliminates tying and knotting wires, reducing installation time
- Ideal for use on high tensile and mild steel trellis wire
- Designed for high load holding and corrosion resistance
- Easily re-tensioned year-after-year
- Adjustable and unlockable



Gripple Plus Range of wire joiner and tensioners.



Top. Wire repair using Gripple Plus Medium.
Bottom. Standard join.

| Product | Maximum Working Load | Wire Range | Part code | Bag quantity | Box quantity |
|---------------------|----------------------|-------------------|-----------|--------------|--------------|
| Gripple Plus Small | 300 kg | 1,40 mm - 2,20 mm | GPS300BB | 20 | 300 |
| Gripple Plus Medium | 400 kg | 2,00 mm - 3,25 mm | GPM200BB | 20 | 200 |
| Gripple Plus Large | 600 kg | 3,25 mm - 4,20 mm | GPL120BB | 10 | 120 |
| Gripple Jumbo* | 600 kg | 2,50 mm - 3,15 mm | J120BB | 10 | 120 |

*The Gripple Jumbo is not releasable

GP No. 1 & GP No. 2

The Gripple GP No. 1 and GP No. 2 are designed with a flat leading edge to create a stable end stop for trellises which use metal end posts

- Terminate and tension in one
- Ideal for use on steel wire and nylon monofilament
- High grade ceramic roller for corrosion resistance
- Spare integral channel allows safe tail wire return
- Tensioned using a Torq Tool and Adaptor in recessed applications
- Adjustable and unlockable



GP No. 1 - Installed on a metal post.



Adaptor - For use when the tensioner is installed on the inside of the post.

| Product | Maximum Working Load | Wire Range | Part code | Bag quantity | Box quantity |
|----------|----------------------|-------------------|-----------|--------------|--------------|
| GP No. 1 | 400 kg | 1,80 mm - 3,00 mm | GP1-200BB | 20 | 200 |
| GP No. 2 | 600 kg | 3,00 mm - 4,20 mm | GP2-100BB | 10 | 100 |

Installation



For tips and instructions on how to install, refer to the technical section on pages 33, 34 & 35.

Starter Pack

The Gripple Plus range of wire joiners and tensioners is suitable for all trellis applications. This kit comes with a tensionnng device and a batch of Gripple tensionnners of your choice.

- Ideal to discover our products
- Starter packs are available with a large product range
- Tensionnng devices are lightweight and compact
- Built with high quality materials
- For more information about Gripple tensionnng devices, refer to page 30



Torq Tool 5 Starter Pack



Top. Trellising with a Torq Tool 8
Bottom. Wire repair using with a Gripple Plus Medium and a Torq Tool 5

| Product | Tensionner | Maximum Working Load | Wire Range | Part code | Box quantity |
|-----------------------|------------------------|----------------------|-------------------|------------|--------------|
| Torq Tool 5 400 kg | 60 Gripple Plus Small | 300 kg | 1,40 mm - 2,20 mm | WJTK5-GPS | 4 |
| | 50 Gripple Plus Medium | 400 kg | 2,00 mm - 3,25 mm | WJTK5-GPM | 4 |
| | 30 Gripple Plus Large | 600 kg | 3,25 mm - 4,20 mm | WJTK5-GPL | 4 |
| | 30 Gripple Jumbo | 600 kg | 2,50 mm - 3,15 mm | WJTK5-JUM | 4 |
| | 30 Barbed | 150 kg | 2,00 mm - 2,50 mm | WJTK5-BARB | 4 |
| | 50 GP No. 1 | 400 kg | 1,80 mm - 3,00 mm | WJTK5-GP1 | 4 |
| Torq Tool 8 100 kg | 50 Gripple Plus Medium | 400 kg | 2,00 mm - 3,25 mm | WJTK8-GPM | 4 |

VIT-S & VIT-S Kit

The Gripple VIT-S is the quick and easy way to manage your fruiting wires. VIT-S works directly with metal and wooden end posts, replacing difficult and unreliable chains. VIT-S can be installed directly onto metal end posts or on wooden & metal posts when bought as a kit with the bespoke VIT-S Hook.

- Replaces cumbersome chains
- Manage the fruiting wires on both metal and wooden end post trellising systems
- Allows wires to be moved independently during the growing season
- Wires easily dropped to the ground for pruning
- Tension is easily applied by hand
- Adjustable and unlockable



VIT-S Kit - Installed on wooden post.



Top. VIT-S Kit - Screwed into metal post
Bottom. VIT-S - Installed on metal post

| Product | Maximum Working Load | Wire Range | Part code | Bag quantity | Box quantity |
|---------------------------------------|----------------------|-------------------|-----------------|--------------|--------------|
| VIT-S for Metal posts | 400 kg | 1,40 mm - 2,60 mm | VIT-S-100-BB | 20 | 100 |
| VIT-S Kit for Wooden & Metal posts | | | VIT-S-KIT-50-BB | 10 | 50 |

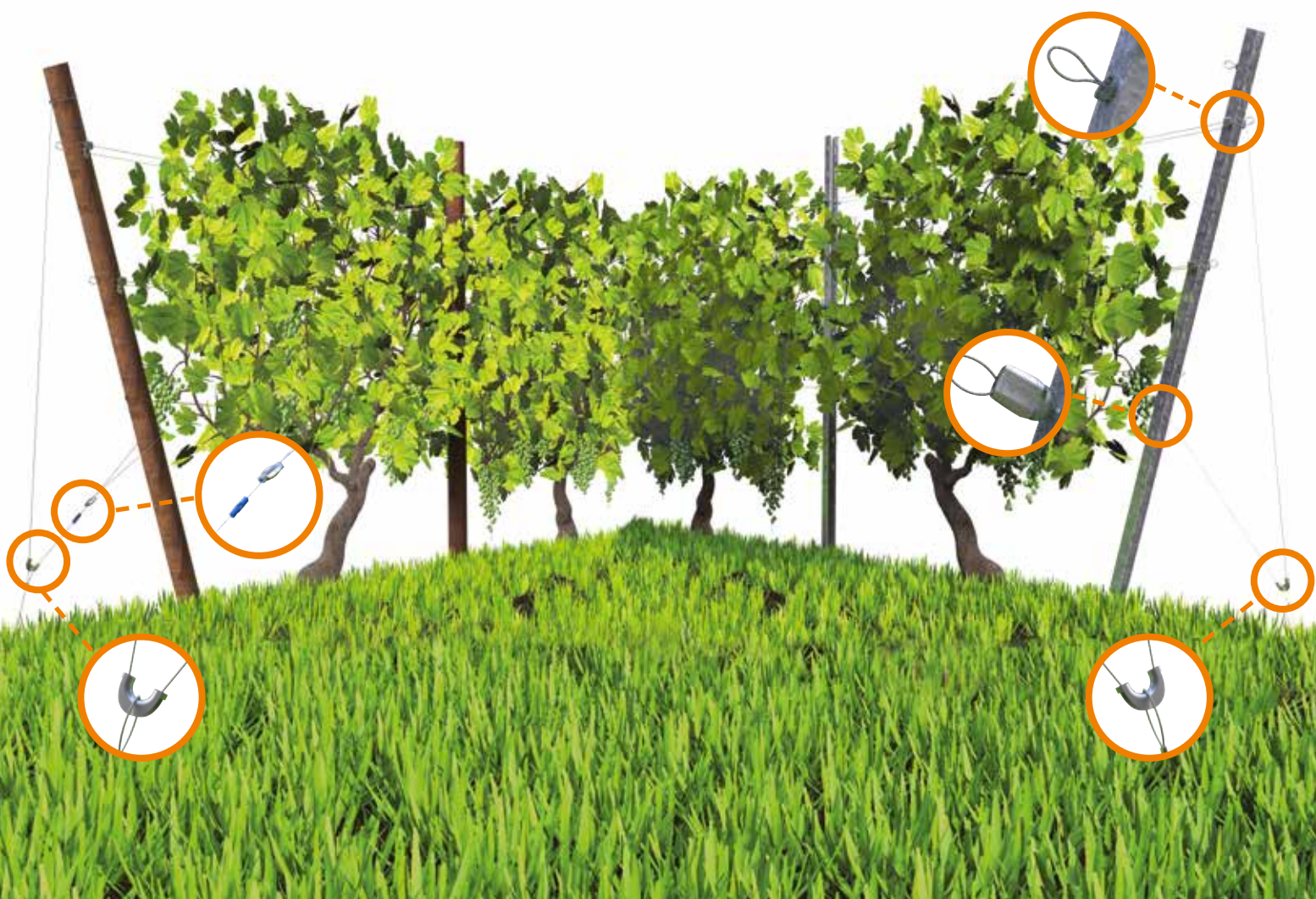
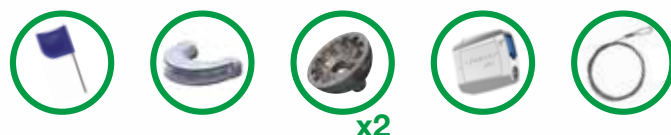
NEW!

Go for the *PLUS VERSION*

GPAK Plus W
for Wooden posts



GPAK Plus M
for Metal posts



GPAK Plus M



GPAK Plus M is the ideal product for a long lasting metal post bracing. Supplied as a ready-to-use kit comprising a pre-cut, fused length of wire rope and a Gripple tensioner, it includes a thimble and two wire protectors designed to create a three point protection against shearing.

- Adjustable and unlockable
- Dual brace points for even load transfer
- Manufactured with zinc aluminium wire rope for corrosion resistance
- Supplied with two wire protectors to avoid damaging the wire rope inside the metal post holes
- Consistent, professional finish
- Easily re-tensioned year-after-year



GPAK Plus M - Designed for metal post bracing



Top. Wire protector
Bottom. Thimble



| Product | Maximum Working Load | Wire Rope Diameter | Wire Rope Length | Part Code | Bag Quantity | Box Quantity |
|---|----------------------|--------------------|------------------|---------------|--------------|--------------|
| GPAK Plus M with Zinc Aluminium wire rope | 400 kg | 3 mm | 2,5 m | GPAK-PM3-2.5M | 10 | 60 |
| | | | 3 m | GPAK-PM3-3M | 10 | 60 |
| | | | 3,5 m | GPAK-PM3-3.5M | 10 | 60 |
| | | | 4 m | GPAK-PM3-4M | 10 | 60 |
| | | | 4,5 m | GPAK-PM3-4.5M | 10 | 60 |

GPAK Plus W & GPAK 4 Classic

GPAK Plus W is designed for wooden and concrete post bracing. Supplied as a ready to use kit comprising a pre-cut length of wire rope, a Gripple Plus Medium and a Twister, it includes a thimble designed to protect the wire rope against shearing. GPAK 4 Classic is a bracing kit for all types of posts without shearing protection accessories.

- Adjustable and unlockable
- Dual brace points for even load transfer
- Easily re-tensioned year-after-year
- Manufactured with zinc aluminium wire rope for corrosion resistance
- Consistent, professional finish



GPAK Plus W installed on a wooden post



*Top. Wire rope installed on top of a wooden post
Bottom. Thimble and Twister*

| Product | Maximum Working Load | Wire Rope Diameter | Wire Rope Length | Part Code | Bag Quantity | Box Quantity |
|--|----------------------|--------------------|------------------|---------------|--------------|--------------|
| GPAK Plus W with Zinc Aluminium wire rope | 400 kg | 3 mm | 3 m | GPAK-PW3-3M | 10 | 60 |
| | | | 3,5 m | GPAK-PW3-3.5M | 10 | 60 |
| | | | 4 m | GPAK-PW3-4M | 10 | 60 |
| | | | 4,5 m | GPAK-PW3-4.5M | 10 | 60 |
| GPAK 4 Classic with Zinc Aluminium wire rope | 600 kg | 4 mm | 5 m | GPAK-C4-5M | 6 | 30 |
| | | | 6 m | GPAK-C4-6M | 6 | 30 |

The APEX Anchor creates a secure, fixed anchoring point below the ground. No pre-digging or ground preparation is required, dramatically reducing installation time.

- Designed for drive efficiency and maximum load capacity
- Streamlined profile for minimal soil disturbance
- Suitable for a variety of soil types and environmental conditions
- Speed of installation delivers significant time and labour savings
- Three tendon types for maximum corrosion resistance



Apex 3 with Rigid Tendon being driven to the ground



Top. Apex 3 with Fibre Tendon and Drive Tool
Bottom. Apex 3 - How it works during activation

| Product | Maximum Working Load | Diameter | Length | Part Code | Bag Quantity | Box Quantity |
|--------------------------------------|---|----------|--------|----------------|--------------|--------------|
| APEX 3 with Zinc Aluminium wire rope | Max working load depends on the type of soil See the SPT results on page 21. | 3 mm | 0,9 m | GA3-3MM-0.9M-Z | 10 | 50 |
| | | 3 mm | 1,5 m | GA3-3MM-1.5M-Z | 10 | 50 |
| APEX 4 with Zinc Aluminium wire rope | | 4 mm | 0,9 m | GA4-4MM-0.9M-Z | 6 | 24 |
| | | 4 mm | 1,5 m | GA4-4MM-1.5M-Z | 6 | 24 |
| APEX 3 with Fibre Tendon | | 4,77 mm | 0,9 m | GA3-FT-0.9M | 10 | 50 |
| | | 4,77 mm | 1,5 m | GA3-FT-1.5M | 10 | 50 |
| APEX 4 with Fibre Tendon | | 4,77 mm | 0,9 m | GA4-FT-0.9M | 6 | 24 |
| | | 4,77 mm | 1,5 m | GA4-FT-1.5M | 6 | 24 |
| APEX 3 with Rigid Tendon | | 6,0 mm | 0,9 m | GA3-RT-0.9M | - | 50 |
| APEX 4 with Rigid Tendon | | 6,0 mm | 0,9 m | GA4-RT-0.9M | - | 24 |

APAK Plus M & APAK Plus W

APAK is a complete anchoring and bracing kit for all types of posts. Comprised of a GPAK Plus M or GPAK Plus W bracing kit and a Apex Anchor, it allows for a fast creation of a strong anchoring point with maximal protection of the wire rope against shearing.

- Available for wooden posts, concrete posts or metal posts
- Easily re-tensioned year-after-year
- Manufactured with zinc aluminium wire rope for corrosion resistance
- Consistent, professional finish
- Suitable for a variety of soil types
- Adjustable and unlockable



APAK Plus M installed on a metal post



Top. Installed Apex Anchor

Bottom. Thimble and Apex Anchor's wire rope

| Product | Maximum Working Load | Wire Rope Diameter | Wire Rope Length | Part Code | Bag Quantity | Box Quantity |
|-------------|--|--------------------|------------------------------------|--------------------|--------------|--------------|
| APAK Plus W | Load is dependent on the soil quality. | 3 mm | Anchor : 1 m Bracing : 4,5 m | APAK-PW3-1M-4.5M | 5 | 25 |
| | | 3 mm | Anchor : 1, 5 m Bracing : 4,5 m | APAK-PW3-1.5M-4.5M | 5 | 25 |
| APAK Plus M | Refer to SPT page 21 | 3 mm | Anchor : 1 m Bracing : 3,5 m | APAK-PM3-1M-3.5M | 5 | 25 |
| | | 3 mm | Anchor : 1, 5 m Bracing : 3,5 m | APAK-PM3-1.5M-3.5M | 5 | 25 |

SPT Count & Anchor Performance

The Standard penetration test (SPT) is widely used to determine the strength and deformation properties of the course soil. Approximate correlation of properties of drained granular soil are:

| | |
|--------------|-----------|
| Very Loose | SPT 0-4 |
| Loose | SPT 4-10 |
| Medium Dense | SPT 10-30 |
| Dense | SPT 30-50 |
| Very Dense | > 50 |

These figures can then be used to obtain typical shear strength and bulk unit weight for each soil. This information is then used to predict APEX Anchor Performance in relation to the conditions described.

The following tables are derived from idealised theoretical calculations and should be used as a guide only. The variability of soil types should always be taken into account and on-site testing should always be carried out in order to obtain more accurate results.

The longevity depends on location factors, soil, water & climate conditions as well as the local risk of erosion on site.

| GA3 Anchor Performance (kg) | | | | |
|-----------------------------|-------------------|-------|---------------------|-------|
| Soil Density | Install Depth 1 m | | Install Depth 1,5 m | |
| Very Loose | 70 | 105 | 108 | 152 |
| Loose | 105 | 173 | 152 | 279 |
| Medium Dense | 173 | 487 | 279 | 845 |
| Dense | 487 | 1 184 | 845 | 2 271 |
| Very Dense | 1 184 | 1 797 | 2 271 | 3 840 |
| Wire Rope Break | 3 mm – 815 kg | | | |
| | 4 mm – 1 200 kg | | | |
| | 6 mm – 2 270 kg | | | |

| GA4 Anchor Performance (kg) | | | | |
|-----------------------------|-------------------|-------|---------------------|-------|
| Soil Density | Install Depth 1 m | | Install Depth 1,5 m | |
| Very Loose | 133 | 197 | 213 | 323 |
| Loose | 197 | 315 | 323 | 534 |
| Medium Dense | 315 | 796 | 534 | 1 525 |
| Dense | 796 | 1548 | 1525 | 3 765 |
| Very Dense | 1 548 | 1 663 | 3 765 | 5 830 |
| Wire Rope Break | 3 mm – 815 kg | | | |
| | 4 mm – 1 200 kg | | | |
| | 6 mm – 2 270 kg | | | |

GA3



GA4



For tips and instructions on how to install, refer to the technical section on pages 33, 34 & 35.

DPAK



Dynamic Post Anchor Kit (DPAK) is supplied as ready-to-use kit comprising a pre-cut, fused length of wire rope and a Gripper tensioner.

- Suitable for wooden, metal and concrete post bracing
- Dual brace points for even load transfer
- Easily re-tensioned year-after-year
- Manufactured with zinc aluminium wire rope for corrosion resistance
- Consistent, professional finish
- Adjustable and unlockable



DPAK - Installed in a loop format with choke knot on a concrete post.



DPAK - Installed in a loop format with choke knot on a concrete post.

| Product | Maximum Working Load | Wire Diameter | Wire Rope Length | Part code | Bag quantity | Box quantity |
|---------|----------------------|---------------|------------------|-------------------|--------------|--------------|
| DPAK 4 | 750 kg | 4 mm | 4 m | GD4-DPAKZ-4.0M-BB | 2 | 10 |
| DPAK 6 | 1 750 kg | 6 mm | 4 m | GD6-DPAK-4.0M-BB | 2 | 10 |
| DPAK 6 | 1 750 kg | 6 mm | 6 m | GD6-DPAK-6.0M-BB | 2 | 10 |

Dynamic Range

The Gripple Dynamic Range of fasteners and tensioners is ideal for high load anchoring and structural bracing.

- High load performance for safety and security
- Join and tension in one
- Integral lock; one action locks the wire in both channels simultaneously
- High grade ceramic roller for corrosion resistance
- Available in ready to use kits (DPAK) for a fast and secure bracing solution
- Adjustable and unlockable



Dynamic 6 - Post bracing.



Dynamic 6 - Tensioning using Contractor Tool.

| Product | Maximum Working Load | Wire Diameter | Part code | Bag quantity | Box quantity |
|-----------|----------------------|----------------|-------------|--------------|--------------|
| Dynamic 4 | 1 000 kg | 4 mm - 4,75 mm | GD4-10PK-BB | 10 | 120 |
| Dynamic 6 | 1 750 kg | 6 mm | GD6-10PK-BB | 10 | 120 |

Concrete Post Kit

The Gripple Concrete Post Kit is the complete solution to quickly and securely fasten trellis wires to all sizes of concrete end posts.

- Ready-to-use kit for quick installation
- Versatile pre-feruled wire rope loop fits all sizes of concrete post
- Manufactured with 1 x 19 zinc aluminium wire rope for corrosion resistance
- Squeeze-fit collar easily secures kit prior to tensioning
- Includes Gripple Plus Medium tensioner; easily re-tension year-after-year
- Adjustable and unlockable



Concrete Post Kit installed around a concrete post



Squeeze-fit collar

| Product | Maximum Working Load | Wire Diameter | Wire Rope Length | Part code | Bag quantity | Box quantity |
|-------------------|----------------------|---------------|------------------|--------------------|--------------|--------------|
| Concrete Post Kit | 400 kg | 2 - 3,25 mm | 1,2 m | GPOST3-KIT-1.2M-BB | 10 | 60 |

GP90



The GP90 is designed to replace the traditional knot used in orchards and greenhouses to create overhead catenaries. Made with a built-in screw, it adapts unto any boundary cable or bar, allowing quick and effortless creation of a perpendicular grid.

- Made to create overhead structures for cloth/net support, crop/down wires, or fruit canopy
- Eliminates tying & knotting of T-joins and other complex joining methods
- Join and tension in one, in under one minute
- Up to 600 kg line load in case of wind lift or heavy crop weight
- Adjustable and unlockable



GP90 used to create a line wire

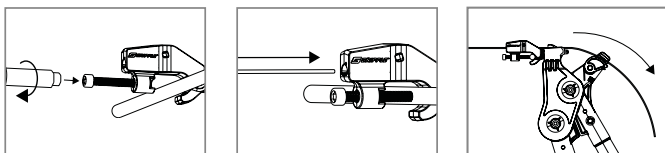


Top. Tomato greenhouse

Bottom. GP90 installed on a hops yard

| Product | Maximum Working Load | Boundary Wire range | Line Wire range | Part code | Bag quantity | Box quantity |
|---------|----------------------|---------------------|-----------------|-----------|--------------|--------------|
| GP90 | 600 kg | 6 mm - 16 mm | 1,8 mm - 4,0 mm | GP90-60BL | - | 60 |
| | | | | GP90-40BB | 4 | 40 |

Installation



For tips and instructions on how to install, refer to the technical section on pages 33, 34 & 35.

Barbed



The Gripple Barbed takes the hassle out of joining and knotting barbed wire creating a secure installation.

- Eliminates tying and knotting wires, reducing installation time
- Join and tension in one
- Easily re-tensioned year-after-year
- Ideal for use on high tensile and mild steel wire
- High grade ceramic roller for corrosion resistance



Barbed on mild steel wire.



Standard 3 line mild steel barbed setup with Barbed for enclosing cattle.

| Product | Maximum Working Load | Wire Range | Part code | Bag quantity | Box quantity |
|---------|----------------------|---|-----------|--------------|--------------|
| Barbed | 150 kg | Mild steel barbed 2 x 2,00 mm - 2 x 2,50 mm | B200BB | 10 | 200 |

T-Clip

The Gripple T-Clip securely fastens fencing wire at an end post. Easily installed without the need to tie or knot wire.

- Eliminates tying and knotting wires, reducing installation time
- No need to cut and remove vertical wire
- The twist on action provides a secure termination
- High grade ceramic roller for corrosion resistance
- Two sizes available for both stock fencing or barbed wire applications



T-Clip 1 - Installed on a stock fence



T-Clip 2 - Used to terminate barbed wire

| Product | Wire Type | Wire Diameter | Part code | Bag quantity | Box quantity |
|----------|------------------------|---------------------------|------------|--------------|--------------|
| T-Clip 1 | Plain wire | 1,80 mm - 3,25 mm | TCLIP200BB | 20 | 200 |
| | High tensile barbed | 2 x 1,60 mm - 2 x 1,70 mm | TCLIP200BB | 20 | 200 |
| T-Clip 2 | Plain, Field, Electric | 3,25 mm - 4,20 mm | TC2-120BB | 10 | 120 |
| | Mild steel barbed | 2 x 1,80 mm - 2 x 2,50 mm | TC2-120BB | 10 | 120 |

Load dependent on accompanying Gripple Plus or Barbed tensioner. Never tension T-Clip directly.

FPAK

The Fencing Post Anchor Kit (FPAK) is supplied as ready-to-use kit comprising a pre-cut, fused length of wire rope and a Gripple tensioner. Ideal for anchoring and structural bracing in fencing applications.

- Suitable for wooden and metal post bracing
- High load capacity
- Easily re-tensioned year-after-year
- Manufactured with zinc aluminium wire rope for corrosion resistance
- Consistent, professional finish
- Adjustable and unlockable



FPAK - Installed as a H-Post brace



FPAK - Installed on a H end post

| Product | Maximum Working Load | Wire Diameter | Wire Rope Length | Part code | Bag quantity | Box quantity |
|---------|----------------------|---------------|------------------|--------------|--------------|--------------|
| FPAK | 400 kg | 3 mm | 3,5 m | FPAK-C3-3.5M | 2 | 10 |

Fencing Pin Kit

This fencing accessory will quickly and easily secure and finish fencing runs on undulating ground, or where there is a risk of unwanted wildlife intrusions.

- Simple, quick installation using electric drill and drive tool
- Alternatively drive the Fencing Pin to fix the fence apron securely in place
- Superior pull out performance compared to traditional pins and stakes
- Twist action for easy installation, and prevents removal by livestock
- Fencing Pin Kit and Installation tool are sold separately



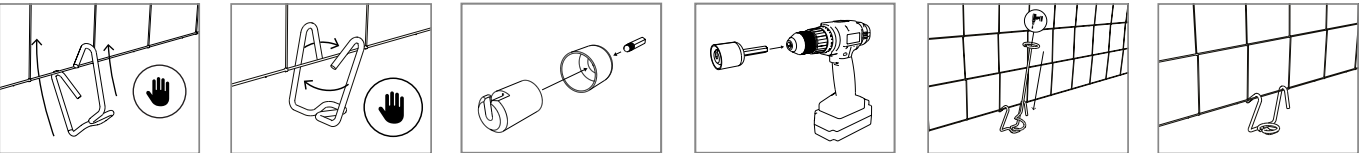
Highway fence with Fencing Pin Kit



Fencing Pin Kit used on a garden fence

| Product | Soil Type | Part code | Bag quantity | Box quantity |
|-------------------|------------|----------------|--------------|--------------|
| Fencing Pin Kit | Tough soil | FENCE-TL-P2 | - | 100 |
| Installation Tool | - | TL-P1-TOOL-STD | - | 1 |

Installation



For tips and instructions on how to install, refer to the technical section on pages 33, 34 & 35.

Anchoring Tools & Accessories



Wire Cutter

The Wire Cutters are suitable for cutting high tensile wire or wire rope up to 4 mm. The spring loaded non-slip handles make it easy to use and the hardened steel jaws deliver great results.

Part code: CUTTER-GRIPPLE

Order amount: 1



Large Cutter

The Large Cutters are suitable for cutting high tensile wire or wire rope up to 6 mm.

Part code: CUTTER-6MM

Order amount: 1



Torq Tensioning Tool

Compact, easy to handle, operate and carry. Apply tension easily with the 6:1 gear drive mechanism with integral tension gauge for precision tensioning up to 400 kg.

Part code: TOOL-5-SINGLE

Order amount: 1



Low Load Torq Tensioning Tool

Compact, easy to handle, operate and carry. Apply tension easily with the 6:1 gear drive mechanism with integral tension gauge for precision tensioning up to 100 kg

Part code: TOOL-8-SINGLE

Order amount: 1



Contractor Tool

The Contractor Tool allows you to tension each line wire individually, optimising the life of your fence.

Part code: TOOL-7-SINGLE

Order amount: 1



Cam Set for Tool

To replace wearing parts from the Torq Tool.

Part codes: CAM-SET-TYPE-G ; CAM-SET-TOOL-7

Order amount: 1



Adaptor

With the addition of the Adaptor, the Torq Tool can be used in recessed applications. See page 13.

Part code: GP1-TOOL-ADAPTOR-BB

Order amount: 1 unit

Anchoring Tools & Accessories

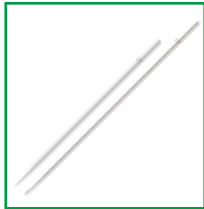


Gripple Petrol Driver

The Gripple Petrol Driver provides quick installation of trellis posts and Gripple's range of Apex anchors. Weighing only 15 kg, it is lightweight and portable.

Part code: EPPD-BXD

Order amount: 1



Drive Tools

High strength rod specifically engineered for easy installation of Apex anchors. Designed to be robust for re-use.

Part codes: DR-A34-1.5M (For GA3 or GA4: 1 m) ; DR-A34-1.8M (For GA3 or GA4: 1,5 m)

Order amount: 1



JackJaw®

Multi-Function tool extracts drive tools and load locks the APEX anchor system.

Part codes: JACKJAW

Order amount: 1



Loop Puller

Ideal tool to activate the Apex anchors in the ground. Can be used by itself or with the JackJaw®.

Part code: TOOL-INSTANT-SET

Order amount: 1



GPD 30 mm Adaptor

Made of 30 mm alu & nylon reducing sleeve. pushes into the standard 78 mm tube and is retained by 2 x 'O' Rings. It can be removed or left in the machine after use.

Part code: EPPD-ADAPTER-ANCHOR

Order amount: 1



GPD 50 mm Adaptor

Allows for any size from 10 mm – 52 mm. It pushes into the standard 78 mm tube and is retained by 2 x 'O' Rings. It can be removed or left in the machine after use.

Part code: EPPD-ADAPTER-50

Order amount: 1



GPD 107 mm Adaptor

The GPD 107 mm Adapter is useful for driving posts up to 100 mm diameter into soft ground. This adapter is straight forward to fit by removing the 8 bolts holding the standard tube and fitting the Magnum in its place.

Part code: EPPD-ADAPTER-107

Order amount: 1

Anchoring Tools & Accessories



Work Belt

The Gripple Work Belt is the perfect accessory for carrying your Gripple products and your vineyard tools.

Part code: WORKBELT-CANVAS

Order amount: 1



Setting Key

The Setting Key allows Gripple tensioners to be repositioned on the wire before tension is applied. To use, simply insert the key into the small hole adjacent to the main channel, releasing the roller and allowing the tensioner to move freely.

Part code: GP-KEYPACK-MULTI

Order amount: 100



Twister

The Twister secures the tail wire. Making the installation completely safe and hazard free, it gives a tidy and neat finish. Use on mild steel or high tensile wire from 1 mm to 3 mm.

Part code: TWISTER-BLUE-100BB

Order amount: 100



Wire Guard

The Gripple Wire Guard eliminates metal on metal contact between the wire and intermediate posts. This protects the wire and prolongs the life of the trellis.

Part code: WIRE-GUARD-100-BB

Order amount: 100



Wire Protector

To use with the GP1 to protect the wire rope from getting damage by the friction against the metal post.

Part code: WP-300BB

Order amount: 20



VIT-S Hook

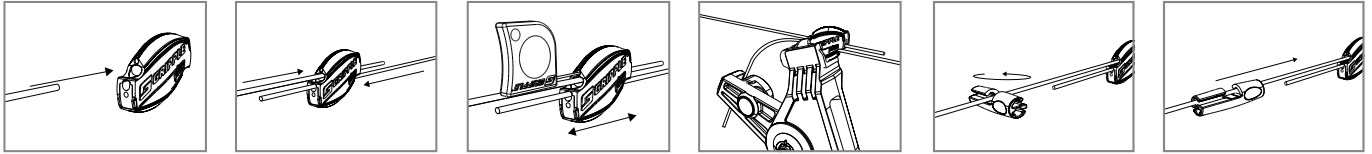
The VIT-S Hook accessory (used in conjunction with the VIT-S Kit) allows for the addition of further fixing points on end posts for use as wires are raised through the growing season.

Part code: VIT-S-HK-240-BB

Order amount: 20

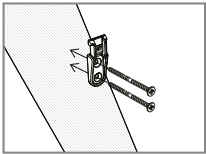
Technical Advice & Installation

Gripple Plus range - Installation (featuring Setting Key adjustment and Twister)

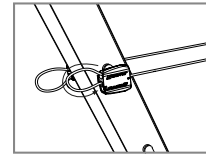
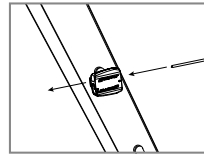
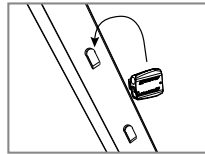


- Apply and re-apply tension with a tensioning tool (leave at least 75 mm tail wire)
- Reposition before applying tension using a Setting Key
- A Twister tidies tail wires and can be removed and re-attached to allow for re-tensioning

VIT-S - Installation

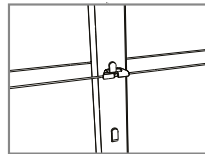
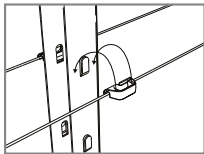
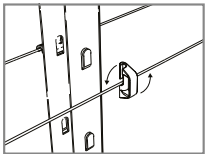


For Installation of the VIT-S Kit on wooden & metal posts; Install the VIT-S hook before continuing...



- Loop the tail wire back into the unit to provide a safe, neat finish
- Install additional VIT-S Hooks to allow positioning up and down the post

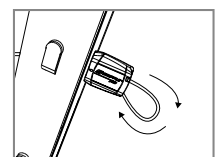
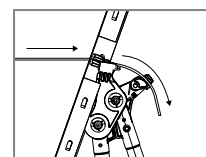
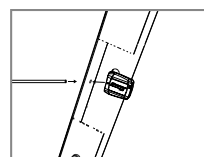
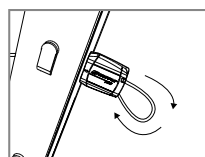
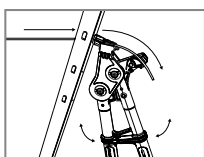
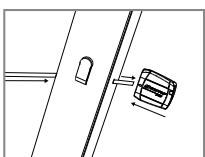
Wire Guard - Installation



- Wire Guard can also be used on wooden & metal posts when used in conjunction with the VIT-S Hook

GP No. 1 & No. 2 - Installation

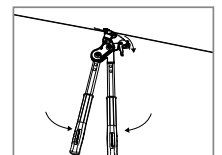
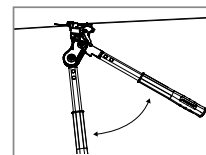
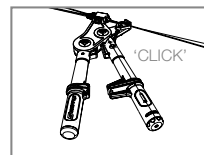
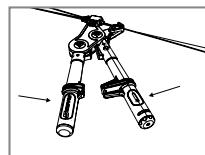
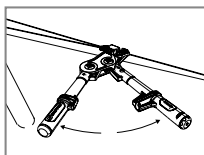
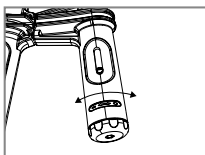
Adaptor (inside metal post)



- If the post is installed 'open-side-out', there is a handy adaptor that can be fitted to the tool to make tensioning easier

Torq Tool - Installation

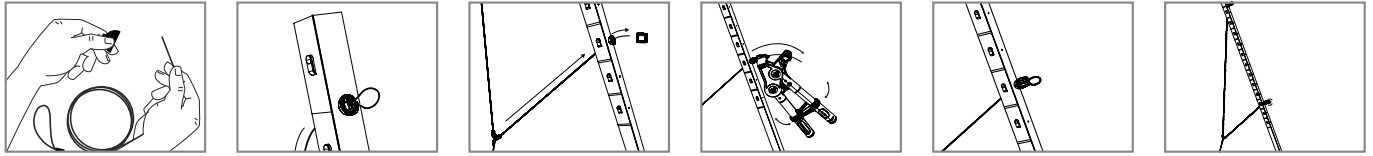
Contractor Tool



- Never tension above the wire manufacturer's recommendation

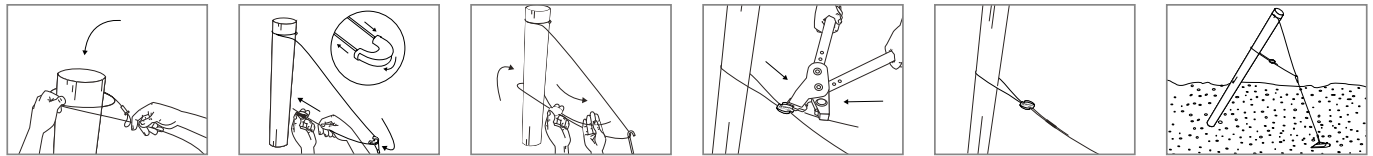
Technical Advice & Installation

GPAK Plus M - Installation (metal post)



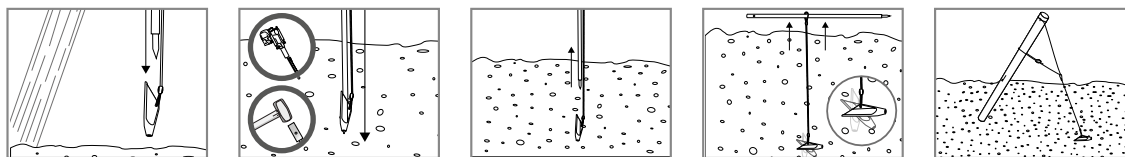
- Combine with an Anchor for a complete anchoring solution that's simple and fast to install.

GPAK Plus W- Installation (wooden post)



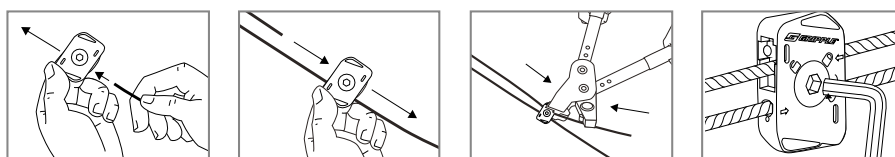
- Combine with an Anchor for a complete anchoring solution that's simple and fast to install.

Apex Anchor - Installation



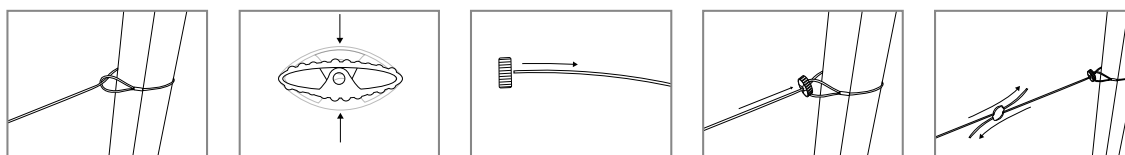
- Always drive the Apex Anchor fully into the ground, to a depth of at least 1 m
- For even quicker installation of Gripple's Anchors, use the Gripple Petrol Driver

Dynamic range



- Use hex key supplied to lock both channels simultaneously
- Unlock and re-tension without releasing the load

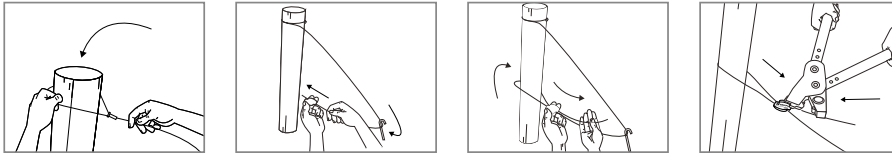
Concrete Post Kit



- Position collar tight to post to secure
- Apply tension with a tensioning tool

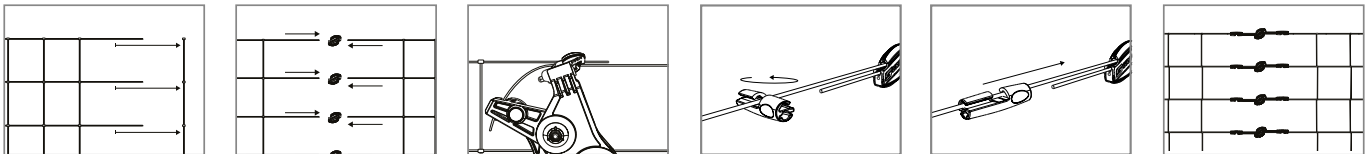
Technical Advice & Installation

DPAK



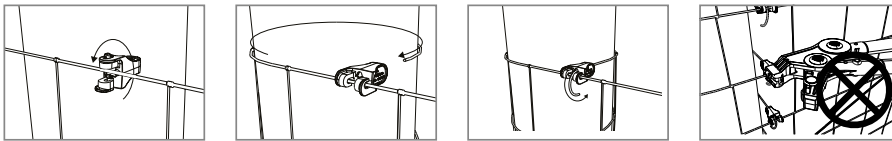
- Combine with an Anchor for a complete anchoring solution that's simple and fast to install.

Gripple Plus range - Join and tension stock fence



- Remove sufficient verticals prior to installation
- Apply and re-apply tension with a tensioning tool
- Trim excess wire with Wire Cutters, leaving a tail the size of the width of your hand to enable re-tensioning

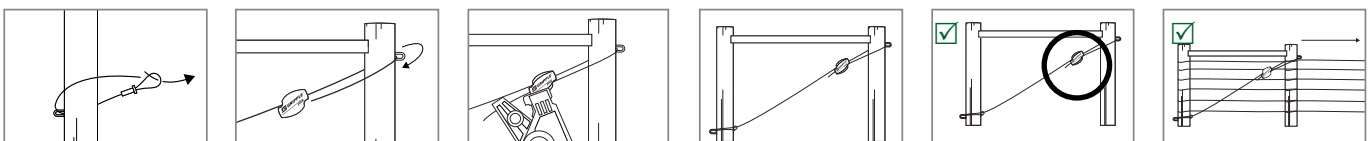
T-Clip - Installation



- On field fence, install the T-Clip as close to the end post as possible, inside the closest vertical
- Hand fasten T-Clip, never tension directly with tensioning tool
- To make the installation easier nearer the ground, install T-Clip upside down and bend wire upwards

FPAK - Installation

Best Practice



- Always 'choke' the wire rope tightly against the bottom of the post to avoid animals getting caught up in the fence
- Coupling a FPAK with an Anchor will secure your fence, where space is limited



www.gripple.com

info@gripple.com

Gripple Ltd (Headquarters)

The Old West Gun Works
Savile Street East
Sheffield S4 7UQ
UK

T | 0800 018 4264
F | +44 (0)114 275 1155
E | info@gripple.com

Gripple Europe SARL

1, rue du commerce
BP 37, 67211 Obernai Cedex,
France

T | +33 (0)3 88 95 44 95
F | +33 (0)3 88 95 08 78
E | frinfo@gripple.com

Gripple GmbH

Loherstraße 4
35614 Asslar
Germany

T | +49 (0)6441 44447 – 00
E | deinfo@gripple.com

Gripple Sp. z o.o.

ul. Chełmżyńska 70
04-247 Warsaw
Poland

T | +48 (0)22 635 62 08
E | plinfo@gripple.com

Gripple's policy is one of continuous development and innovation. We therefore reserve the right to alter specifications, etc. without notice.

WE ARE SOCIAL
FOLLOW OUR UPDATES



BROC-VOF-ENG-EU-PG19

Published 08/2020

Please refer to www.gripple.com for the most up to date user advice and product information.



© 2020 Gripple
Gripple is a registered trademark of Gripple Limited,
Company registered in England No. 1772901, VAT Reg No. GB 600 1951 88