



Landscaping Solutions

Complete anchoring and trellising solutions



Tree anchoring solutions

Gripple tree anchoring systems comprise a range of kits for securing newly planted semi-mature trees, protecting them while they become established and promoting vertical growth in tree avenues. They are optimised for quick and easy installation for both urban and rural environments.

An introduction to Gripple

Gripple is a global company providing products and services for landscape & nursery, building services, civil construction, seismic and agriculture industries. Our solutions are synonymous with time-saving simplicity and problem solving innovation. Supported by outstanding customer support, quality control and advanced manufacturing, we deliver market-leading products, trusted by customers around the world.



Tree Guying Kit (TGK)

Provides an above ground tree anchoring solution to stabilise the tree and promote vertical growth. Supplied in ready to use kits and suitable for use with trees up to 12 m tall.

- **Safe** – ground level tensioning promotes vertical growth and reduces time working at height
- **Simple** – quick and easy installation
- **Quick** – tension and adjust with the Gripple tensioner and the Torq tensioning tool
- **Protective** – rubber sleeves eliminate frictional damage to trunk



Kit varies dependant on size.



Product Code	Tree Height	Tree Girth	Description
TGK2-2MMX3.5M-BB	2,5 m	15 cm	<ul style="list-style-type: none">• Gripple Anchor TL-A2 & GP Small• 2 mm wire, breaking load 280 kg• Quick Links• Protective rubber sleeves• Safety Webbing
TGK3-3MMZ-4.5M-BB	4,5 m	25 cm	<ul style="list-style-type: none">• Gripple Anchor TL-A3 & GP Medium• 3 mm wire, breaking load 800 kg• Quick Links• Protective rubber sleeves• Safety Webbing
TGK4-4MMZ-5M-BB	7.5 m	45 cm	<ul style="list-style-type: none">• Gripple Anchor TL-A4 & GP Large• 4 mm wire, breaking load 1 200 kg• Quick Links• Protective rubber sleeves• Safety Webbing
TGK5-6MMZX7M-BB	12 m	75 cm	<ul style="list-style-type: none">• Gripple Anchor TL-A4 & Gripple D6• 6 mm wire, breaking load 2 250 kg• Quick Links• Protective rubber sleeves• Safety Webbing

Kits are also available with four anchor points on request

For tips and instructions on how to install, refer to the technical section on pages 19 to 22.

Root Ball Kit (RBK)

Below ground tree anchoring system designed to stabilise newly planted semi-mature trees. Features a strap tensioning system for ease of use and supplied in ready-to-use kits.

- **Simple** – fast installation
- **Long-lasting** – allows tree to naturally establish itself
- **Secure** – deters vandals as there is no sign the tree is newly planted
- **Versatile** – sizes available to fit most applications, as shown below
- **Safe** – trip hazard reduced as the kit is underground



Kit varies dependant on size.

Product Code	Tree Height	Tree Girth	Description
GRBK3-STRAP3-1M-BB	4,5 m	25 cm	<ul style="list-style-type: none">• Gripple Anchor TL-A3• 3 mm wire, breaking load 800 kg• Quick Links• 3 m x 40 mm strapping• Ratchet tensioner
GRBK4-STRAP5-1M-BB	7,5 m	45 cm	<ul style="list-style-type: none">• Gripple Anchor TL-A4• 4 mm wire, breaking load 1 200 kg• Quick Links• 5 m x 40 mm strapping• Ratchet tensioner
GRBK5-STRAP5-1.5M-BB	12 m	75 cm	<ul style="list-style-type: none">• Gripple Anchor TL-A4• 6 mm wire, breaking load 2 250 kg• Quick Links• 5 m x 40 mm strapping• Ratchet tensioner

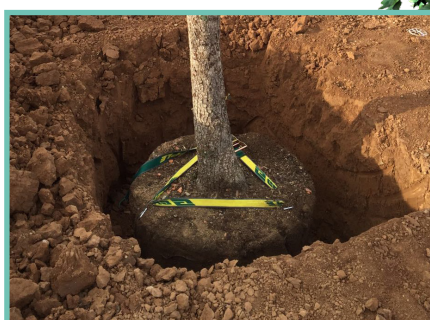


Kits are also available with four anchor points on request

Premium Root Ball Kit (PRBK)

The premium range of root ball kits share the same benefits of the standard kits with the addition of the Gripple Dynamic range. This allows adjustment of the anchor points to ensure the correct and most secure installation of the tree by guiding the loop into the best position.

- **Adjustable** – optimum positioning of anchor point irrespective of ground conditions
- **Strong** – high load performance for safety and security
- **Secure** – deters vandals as there is no sign the tree is newly planted
- **Long-lasting** – allows tree to naturally establish itself
- **Simple** – fast installation
- **Versatile** – sizes available to fit most applications, as shown below
- **Safe** – trip hazard reduced as the kit is underground



Kit varies dependant on size.



Product Code	Tree Height	Tree Girth	Description
PRBK3-STRAP3-1M-BB	4,5 m	25 cm	<ul style="list-style-type: none">• Gripple Anchor TL-A3 & Gripple D3• 3 mm wire, breaking load 800 kg• Quick Links• 3 m x 40 mm strapping• Ratchet tensioner
PRBK4-STRAP5-1M-BB	7,5 m	45 cm	<ul style="list-style-type: none">• Gripple Anchor TL-A4 & Gripple D4• 4 mm wire, breaking load 1 200 kg• Quick Links• 5 m x 40 mm strapping• Ratchet tensioner
PRBK5-STRAP5-1.5M-BB	12 m	75 cm	<ul style="list-style-type: none">• Gripple Anchor TL-A4 & Gripple D6• 6 mm wire, breaking load 2 250 kg• Quick Links• 5 m x 40 mm strapping• Ratchet tensioner



Kits are also available with four anchor points on request

For tips and instructions on how to install, refer to the technical section on pages 19 to 22.

Concrete Fixing Kit (CFK)

Below ground tree anchoring system designed to stabilise newly planted trees where concrete flooring or containers are below the planting location. Features a strap tensioning system for ease of use and is supplied as a ready-to-use kit.

- **Specifically engineered** – secures trees to a concrete structure where anchors cannot be driven
- **Simple** – quick and easy installation
- **Strong** – incorporates Gripple Dynamic tensioners for maximum strength in windy environments e.g. roof gardens
- **Secure** – deters vandals as there is no sign the tree is newly planted



Kit varies dependant on size.



Product Code	Tree Height	Tree Girth	Description
CFK3-STRAP3-1M-BB	4,5 m	25 cm	<ul style="list-style-type: none">• Gripple Plus Medium• 3 mm wire, breaking load 800 kg• Quick Links• 3 m x 40 mm strapping• Ratchet tensioner• M10 eyebolt and Drop-in Anchor
CFK4-STRAP5-1M-BB	7,5 m	45 cm	<ul style="list-style-type: none">• Gripple Plus Large• 4 mm wire, breaking load 1 200 kg• Quick Links• 5 m x 40 mm strapping• Ratchet tensioner• M10 eyebolt and Drop-in Anchor
CFK5-STRAP5-1.5M-BB	12 m	75 cm	<ul style="list-style-type: none">• Gripple D6• 6 mm wire, breaking load 2 250 kg• Quick Links• 5 m x 40 mm strapping• Ratchet tensioner• M10 eyebolt and Drop-in Anchor



Kits are also available with four anchor points on request

DM Kit

Below ground tree anchoring system designed to stabilise newly planted trees. For use when the driving of anchors is not possible and a more traditional ballast system needs to be used, for example, concrete blocks. Features a strap tensioning system for ease of use and is supplied as a ready-to-use kit.

- **Simple** – quick and easy installation
- **Specifically engineered** – secures trees using available ballast where anchors cannot be driven
- **Strong** – incorporates Gripple Dynamic tensioners for maximum strength and adaptability to the size of the tree pit available
- **Secure** – deters vandals as there is no sign the tree is newly planted



Kit varies dependant on size.



Product Code	Tree Height	Tree Girth	Description
DMK3-STRAP3-1M-BB	4,5 m	25 cm	<ul style="list-style-type: none">• Gripple Plus Medium• 3 mm wire, breaking load 800 kg• Quick Links• 3 m x 40 mm strapping• Ratchet tensioner
DMK4-STRAP5-1M-BB	7,5 m	45 cm	<ul style="list-style-type: none">• Gripple Plus Large• 4 mm wire, breaking load 1 200 kg• Quick Links• 5 m x 40 mm strapping• Ratchet tensioner
DMK5-STRAP5-1.5M-BB	12 m	75 cm	<ul style="list-style-type: none">• Gripple D6• 6 mm wire, breaking load 2 250 kg• Quick Links• 5 m x 40 mm strapping• Ratchet tensioner

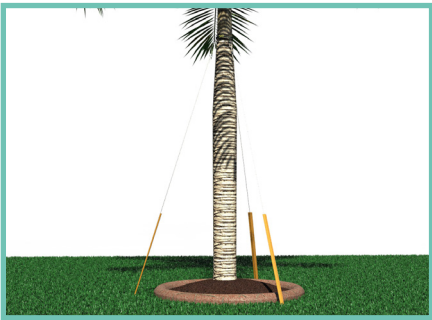
Kits are also available with four anchor points on request

For tips and instructions on how to install, refer to the technical section on pages 19 to 22.

Palm Bracing Kit (PBK)

Gripple Palm Brace Kit (PBK) provides an efficient solution for the protection of freshly planted palms and allows trees to grow whilst preventing them from falling over.

- Quick and efficient installation using pre-assembled kits
- Allows tree to grow naturally
- Eliminates time & labour associated with installing wooden stakes
- Can be used on a wide variety of palm trees
- Gripple fasteners allow for easy tensioning and re-tensioning of brace



Kit varies dependant on size.

Product Code	Tree Height	Tree Girth	Description
PBK3-5M-3U	4,5 m	25 cm	<ul style="list-style-type: none">• Gripple Plus Medium• Gripple Anchor TL-A3• 3 mm wire, breaking load 800 kg• Quick Links• Strapping• Ratchet tensioner• Orange tubular webbing
PBK4-6M-3U	7,5 m	45 cm	<ul style="list-style-type: none">• Gripple Plus Large• Gripple Anchor TL-A4• 4 mm wire, breaking load 1 200 kg• Quick Links• Strapping• Ratchet tensioner• Orange tubular webbing



Kits are also available with four anchor points on request

Professional Trellising Kit (PTK)

Strong, discreet framework to support wall vegetation growth; ideal for hobby gardeners and professional landscapers.

- **Time-saving** - fast trellis solution ideal for 'green wall' applications
- **Long-lasting** - available with galvanised or stainless steel wire
- **Easy-to-use** - fast installation facilitated by the wall hub which ensures sufficient space between the wall and the vegetation
- **Secure** - join and tension wire with Gripple Plus wire tensioners
- **Compatible** - available in two wire rope sizes; 2 and 3 mm, with a 50 m length of wire rope
- **Versatile** - create many different design variations
- **Safe** - rubber wire caps prevent injuries and protect the ends of the wire, once cut to size.



Product Code	Description
PTK-50-2MM-Z	<ul style="list-style-type: none">• 10 Gripple Plus Small• 50 m of 2 mm galvanised wire rope diameter• 20 Wall hubs made of 304 stainless steel and caps
PTK-50-2MM-S	<ul style="list-style-type: none">• 10 Gripple Plus Small• 50 m of 2 mm stainless steel wire rope diameter• 20 Wall hubs made of 304 stainless steel and caps
PTK-50-3MM-Z	<ul style="list-style-type: none">• 10 Gripple Plus Medium• 50 m of 3 mm galvanised wire rope diameter• 20 Wall hubs made of 304 stainless steel and caps
PTK-50-3MM-S	<ul style="list-style-type: none">• 10 Gripple Plus Medium• 50 m of 3 mm stainless steel wire rope diameter• 20 Wall hubs made of 304 stainless steel and caps



Garden Trellis Kit

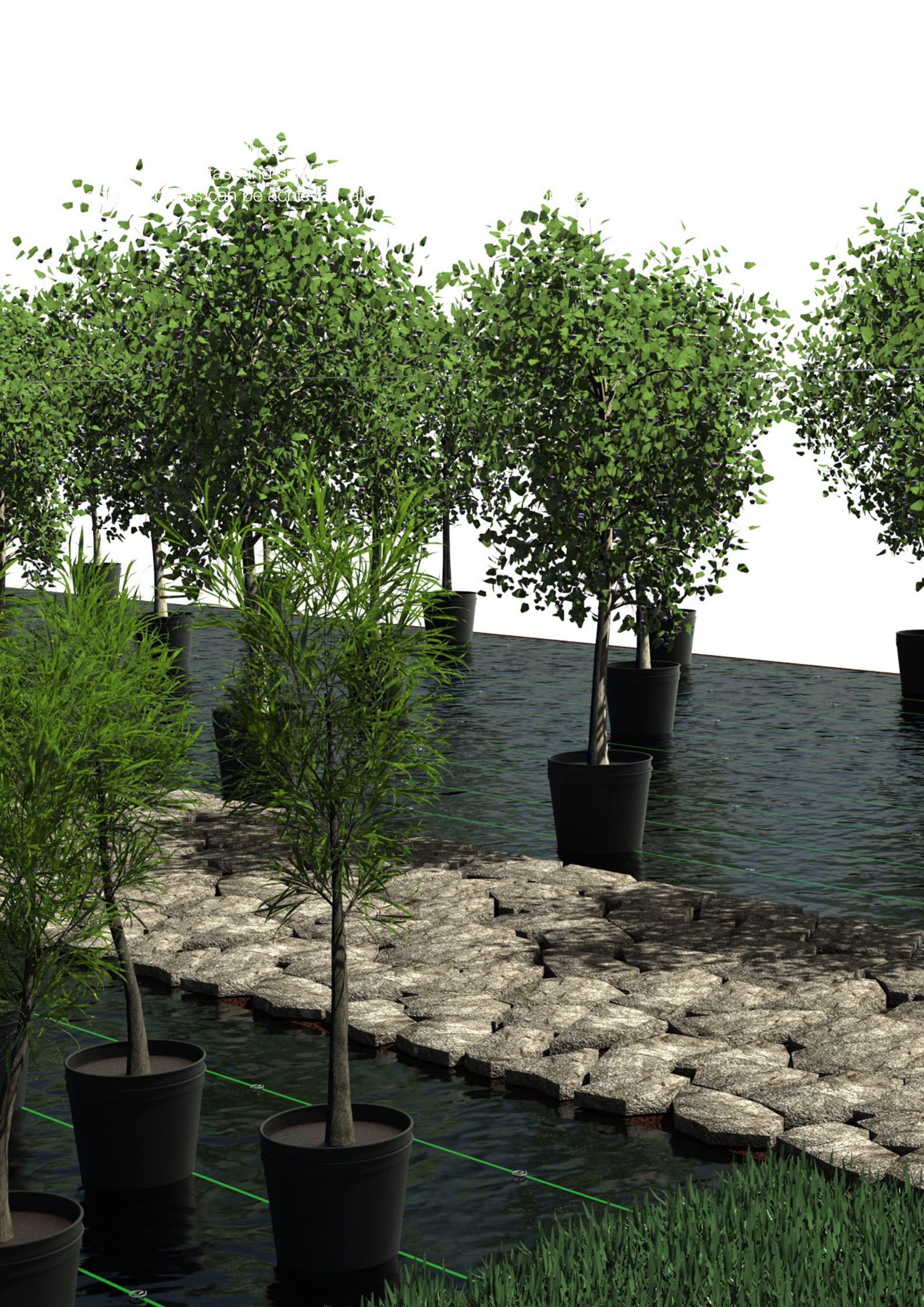


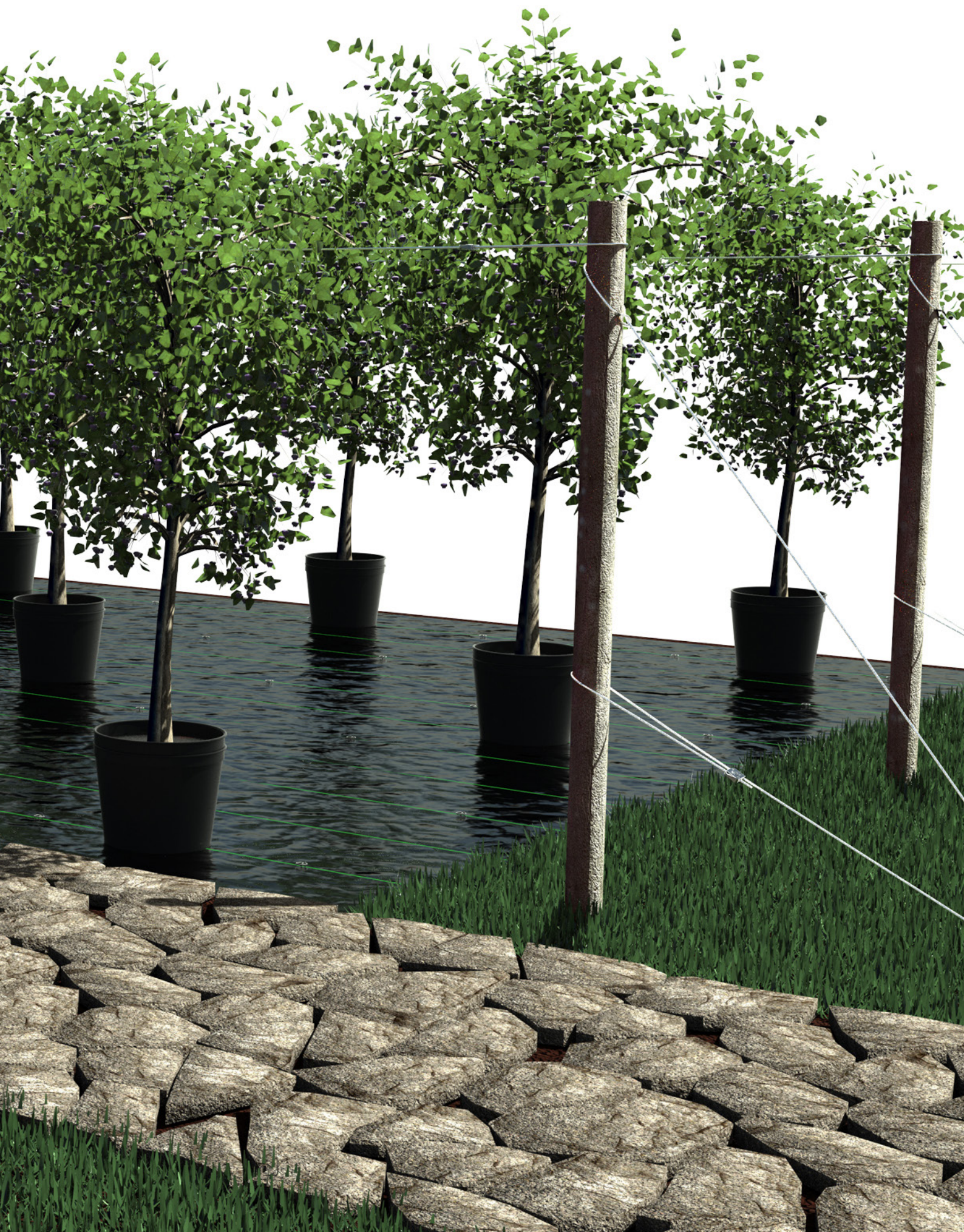
Wire cutters



Tensioning tool

For tips and instructions on how to install, refer to the technical section on pages 19 to 22.

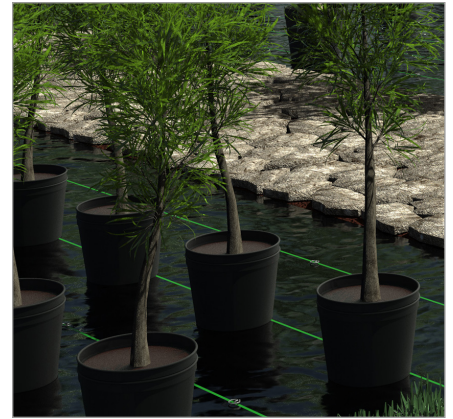




Root Ball Kit (RBK)

Below ground tree anchoring system for larger containerised trees to be secured individually. Features a strap tensioning system for ease of use and supplied in ready-to-use kits.

- The use of ground anchors with your preferred top assembly method allows for any size of tree to be secured
- Container can be strapped to the ground using a strapping system, or the tree itself can be tethered with webbing or wire rope
- Fast and simple installation
- Aesthetically pleasing
- Can be installed using Gripple Petrol Driver or manually
- Available in ready-to-use kits

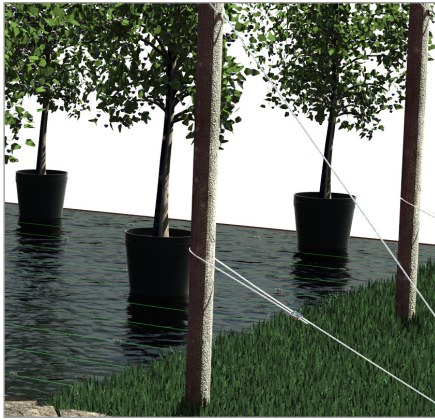
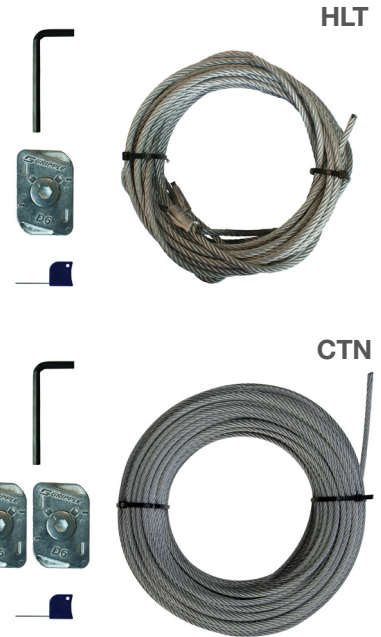


Product Code	Tree Height	Tree Girth	Description
GRBK3-STRAP3-1M-BB	4,5 m	25 cm	<ul style="list-style-type: none">• Gripple Anchor TL-A3• 3 mm wire, breaking load 800 kg• Quick Links• 3 m x 40 mm strapping• Ratchet tensioner
GRBK4-STRAP5-1M-BB	7,5 m	45 cm	<ul style="list-style-type: none">• Gripple Anchor TL-A4• 4 mm wire, breaking load 1 200 kg• Quick Links• 5 m x 40 mm strapping• Ratchet tensioner
GRBK5-STRAP5-1.5M-BB	12 m	75 cm	<ul style="list-style-type: none">• Gripple Anchor TL-A4• 6 mm wire, breaking load 2 250 kg• Quick Links• 5 m x 40 mm strapping• Ratchet tensioner

HLT & CTN Kits

Trellising systems incorporating Catenary Kits (CTN), anchors and bracing solutions (HLT) for the support of large tree growth.

- Provides high level support to large trees and plants
- Helps prevent damage to plants and loss of valuable fertilisers and composts
- Fast and easy installation
- Suitable for wooden and metal post bracing
- High load capacity
- Easily re-tensioned year-after-year
- Manufactured with galvanised wire rope for corrosion resistance
- Can also be used for greenhouse and polytunnel bracing



Part code	Designation	Material	Length (m)	Box Quantity
HLT-6MM-LZ-4M	The HLT Kit is composed of: Dynamic D6 locking system with a 6 mm wire rope 4 m length with a loop end fixing	Zinc Aluminium	4	15
HLT-6MM-LZ-6M	The HLT Kit is composed of: Dynamic D6 locking system with a 6 mm wire rope 6 m length with a loop end fixing	Zinc Aluminium	6	15
CTN-6MM-20M	The CTN Kit is composed of: 2 Dynamic D6 locking system with a 6 mm wire rope 20 m length with both fused end	Zinc Aluminium	20	2
CTN-6MM-30M	The CTN Kit is composed of: 2 Dynamic D6 locking system with a 6 mm wire rope 30 m length with both fused end	Zinc Aluminium	30	2
CTN-6MM-50M	The CTN Kit is composed of: 2 Dynamic D6 locking system with a 6 mm wire rope 50 m length with both fused end	Zinc Aluminium	50	2



Wire cutters



Tensioning tool

For tips and instructions on how to install, refer to the technical section on pages 19 to 22.

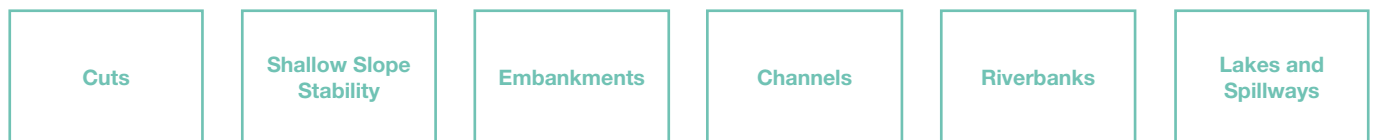
Erosion and slopes stabilisation

Gripple offers a comprehensive solution for slope stability and erosion control, characterised by high quality products, designed and manufactured in-house, alongside on-site training and support delivered by a team of dedicated technical experts.

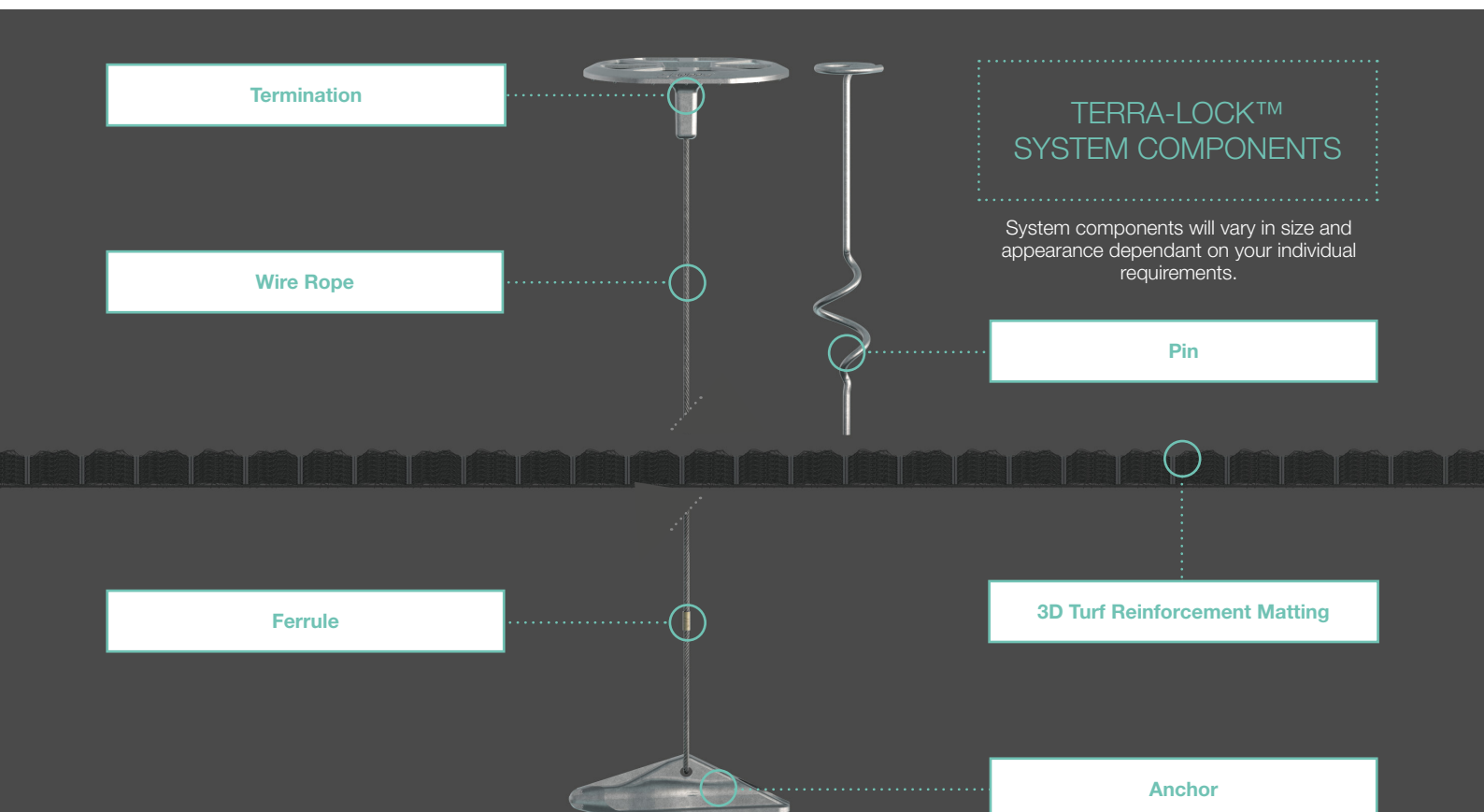
Terra-Lock™ System

Gripple's Terra-Lock™ System, in-use on sites around the world, is an innovative method of geotechnical engineering for heavy erosion and slope stability, delivering significant time and labour savings, immediate security and aiding vegetation growth.

The system is well suited but not limited to:



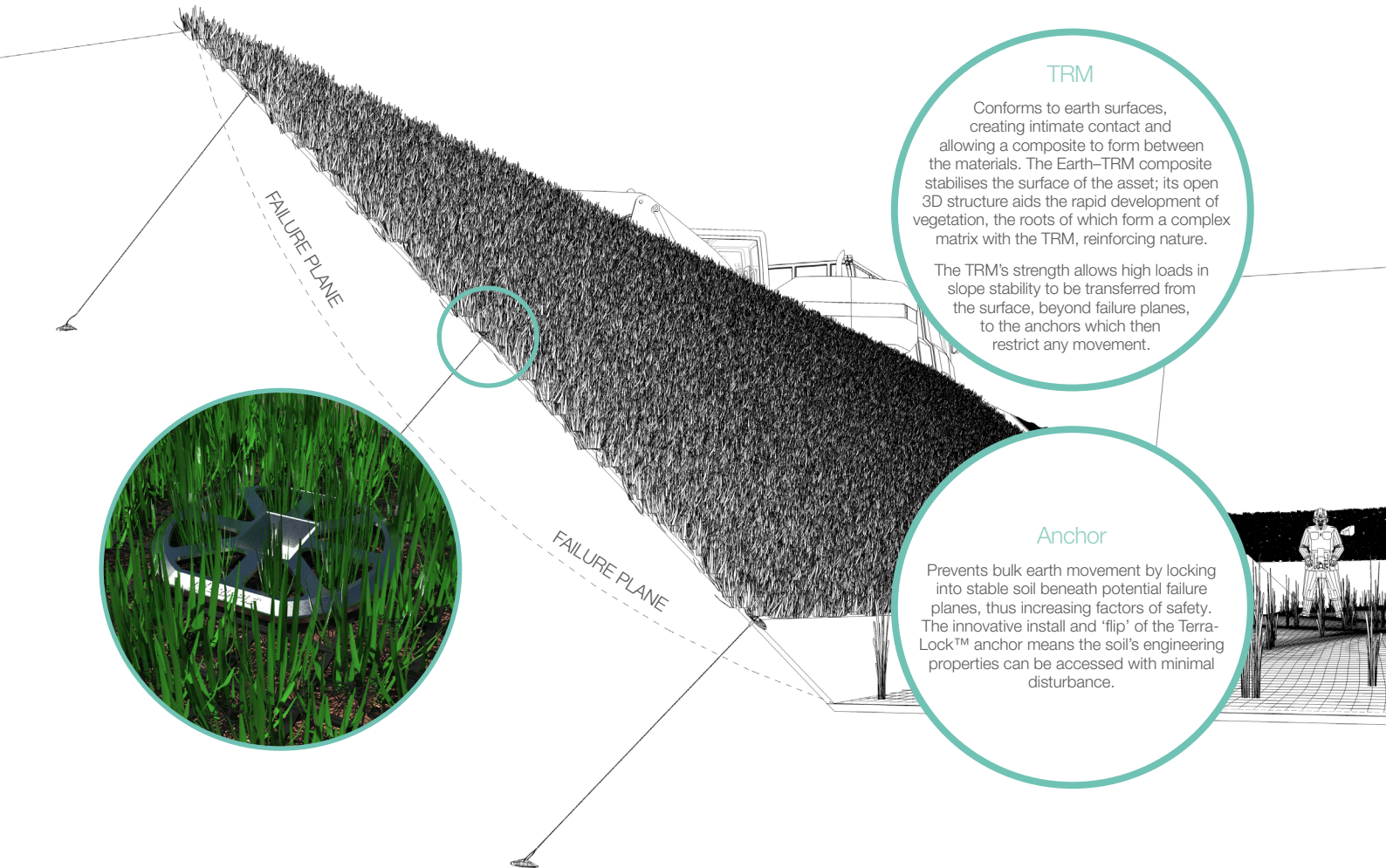
Creating sustainable and durable green structures by reinforcing nature, the Terra-Lock™ System is the innovative, next generation solution, designed to replace or work in conjunction with traditional methods of soil retention and slope stabilisation.



For further installation help and to see our products in action visit: www.youtube.com/grippletv.

How It Works

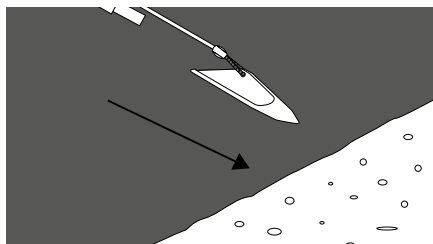
The Terra-Lock™ System gains its stability by coupling key engineering principles with specifically designed products to successfully utilise the natural properties of on-site materials. Gripple's innovative 'grip' and 'pull' technology is complemented by anchor systems and TRM (Turf Reinforcement Matting) to deliver a comprehensive, trusted solution.



WATER MANAGEMENT

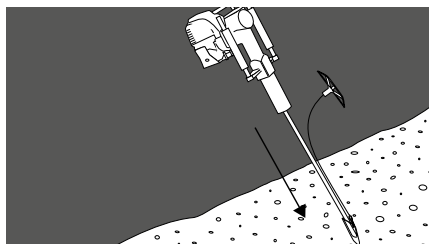
Hydraulic design ensures the correct TRM can be installed. The TRM reduces surface erosion from water and air, while its permeability prevents undermining of the structure. The Earth-Vegetation-TRM composite allows for a large increase in the allowable shear stresses from erosion which prevents excessive soil loss. The anchors then transfer shear forces deep into the ground to ensure a secure and stable system.

INSTALLATION

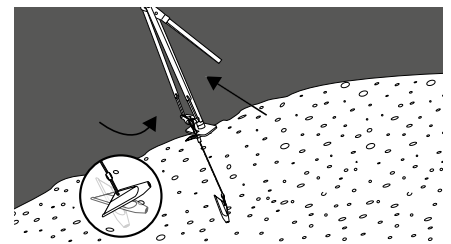


DRIVE:

Insert Drive Tool through the anchor and place against surface.



Use GPD to install the anchor at the required depth.



LOCK:

Use JackJaw® to remove Drive Tool and load lock system.

For tips and instructions on how to install, refer to the technical section on pages 19 to 22.

TL-100

Secures TRM and HPTRM whilst promoting vegetation regrowth in erosion control and soil stabilisation applications.

- Ideal for mat fixing for the fight against invasive plants
- Open face promotes vegetation regrowth
- 100 mm head size
- Accepts 3 mm wire
- Zinc die-cast, one-piece housing
- Pre-assembled kit ensures time and labour savings
- Wire can be cut below grade
- Available with 1 m wire length as a standard and can be delivered with 1,5 m on request



Part code	Working load	Wire rope material	Anchoring depth (m)	Anchor size	Box Quantity
TL100-TLA2-1M-3MM-Z	Load rating: 225 kg Ultimate Load Rating: 500 kg	Zinc Aluminium	1	TL-A2	25
TL100-TLA2-1M-3MM-S	Load rating: 225 kg Ultimate Load Rating: 500 kg	Stainless Steel	1	TL-A2	25
TL100-TLA3-1M-3MM-Z	Load rating: 450 kg Ultimate Load Rating: 800 kg	Zinc Aluminium	1	TL-A3	20
TL100-TLA3-1M-3MM-S	Load rating: 450 kg Ultimate Load Rating: 800 kg	Stainless Steel	1	TL-A3	20
TL100-TLA4-1M-3MM-Z	Load rating: 450 kg Ultimate Load Rating: 800 kg	Zinc Aluminium	1	TL-A4	15
TL100-TLA4-1M-3MM-S	Load rating: 450 kg Ultimate Load Rating: 800 kg	Stainless Steel	1	TL-A4	15



TL-A2

Surface

1 940 mm²



TL-A3

3 870 mm²



TL-A4

7 740 mm²

For tips and instructions on how to install, refer to the technical section on pages 19 to 22.

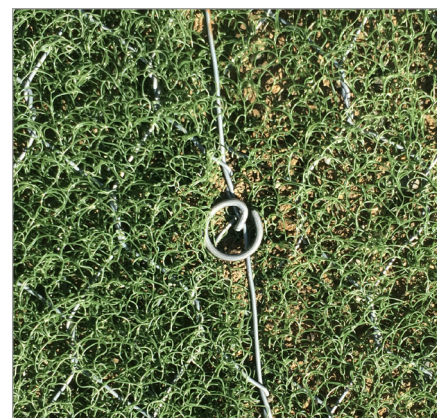
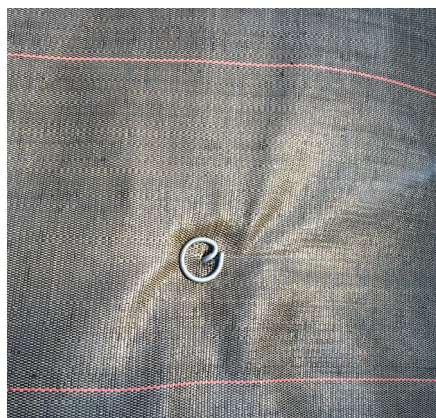
TL-P

The high load anchoring pin is designed to hold all types of turf reinforcement matting, erosion blankets, geotextiles and landscaping fabrics.

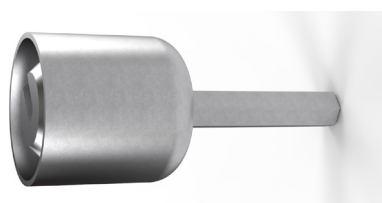
- Up to ten times quicker to install
- Reduces labour costs associated with reworking loose pins
- Superior pull out performance compared to traditional pins and stakes
- Ensures close contact between the matting and soil
- Designed to eliminate damage to the mat
- Removes the need for a separate washer
- Easy installation with standard electric drill and bespoke installation tools



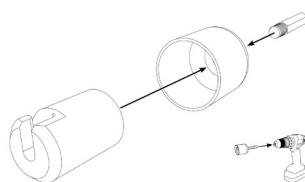
TL-P1 TL-P2 TL-P3 TL-P4



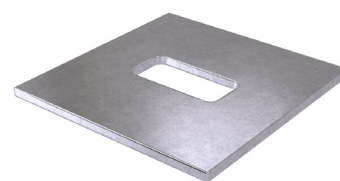
Part code	Designation	Material	Length (mm)	Soil type	Box Quantity
TL-P1	Wire diameter: 4 mm Length: 200 mm Head diameter: 35 mm	Galvanised Steel	200	Soft soil	200
TL-P2	Wire diameter: 4 mm Length: 200 mm Head diameter: 35 mm	Galvanised Steel	200	Tough soil	150
TL-P3	Wire diameter: 4 mm Length: 300 mm Head diameter: 35 mm	Galvanised Steel	300	Soft soil higher load	100
TL-P4	Wire diameter: 4 mm Length: 300 mm Head diameter: 35 mm	Galvanised Steel	300	Tough soil higher load	100



TL-P Tool



Installation



Washer (50 x 50 mm)

For tips and instructions on how to install, refer to the technical section on pages 19 to 22.

Tools & Accessories



GPD

The Grippler Petrol Driver provides quick installation of Grippler's anchor range. Lightweight and portable. Rental options are available.
Part code: EPPD-BXD



Tensioning Tools

Tensioning Tools are lightweight, strong, robust, compact and tensions up to 6 mm Grippler fasteners.

Part codes:

TOOL-5-SINGLE (Torq Tool)

TOOL-7-SINGLE (Contractor Tool)



TL-P Tool

Installs TL-P to full depth without damaging mat. Automatically dis-engages when pin reaches full depth.

Part code: TL-P1-TOOL-STD



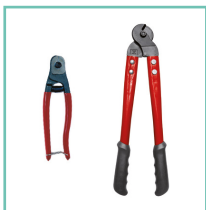
JackJaw®

Multi-Function tool extracts drive tools and load locks the anchor system. Available with load cell for immediate testing.

Part codes:

JACKJAW

JACKJAW-LOAD-CELL (equipped with a load cell)



Wire Cutters

Suitable for cutting high tensile wire up to 4 mm (Small Cutters) and 6 mm (Large Cutters).

Part codes:

CUTTER-GRIPPLE (For wire rope diameter up to 4 mm)

CUTTER-6MM (For 6 mm wire rope diameter)



Drive Tools

High strength rod specifically engineered for easy installation of anchors. Designed to be robust for re-use.

Part codes:



DR-A2-1.5M (For TL-A2 anchoring depth 1 m)

DR-A2-1.8M (For TL-A2 anchoring depth 1,5 m)

DR-A34-1.5M (For TL-A3 or TL-A4 anchoring depth 1 m)

DR-A34-1.8M (For TL-A3 or TL-A4 anchoring depth 1,5 m)

Tool Matrix

	Necessary
	Optional

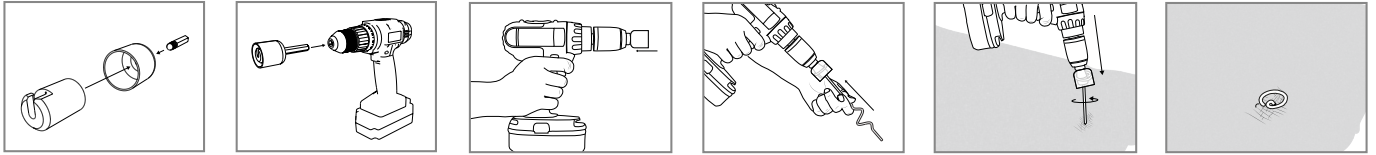
		GPD	Hammer	Tensioning Tool	TL-P Tool	Wire Cutters	6 mm Wire Cutters	JackJaw®	Drive Tool DR-A2-1.5M	Drive Tool DR-A34-1.5M	Drive Tool DR-A34-1.8M
Root Ball Kits	GRBK3										
	GRBK4										
	GRBK5										
Premium Root Ball Kits	PRBK3										
	PRBK4										
	PRBK5										
Tree Guying Kits	TGK2										
	TGK3										
	TGK4										
	TGK5										
Ballast Kits	DMK2										
	DMK3										
	DMK4										
Concrete Fix Kits	CFK3										
	CFK4										
	CFK5										
Palm Bracing Kits	PBK3										
	PBK4										
Green Wall	PTK										
Trellising and Catenary kits	HLT										
	CTN										
TL-100	TL-A2										
	TL-A3										
	TL-A4										
TL-P	TL-P1										
	TL-P2										
	TL-P3										
	TL-P4										

For tips and instructions on how to install, refer to the technical section on pages 19 to 22.

Technical Advice & Installation

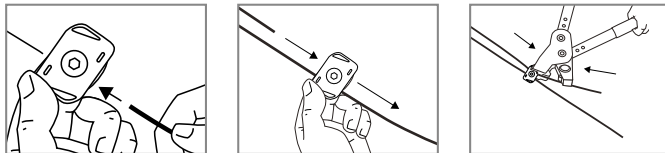
TL-P Tool

TL-P



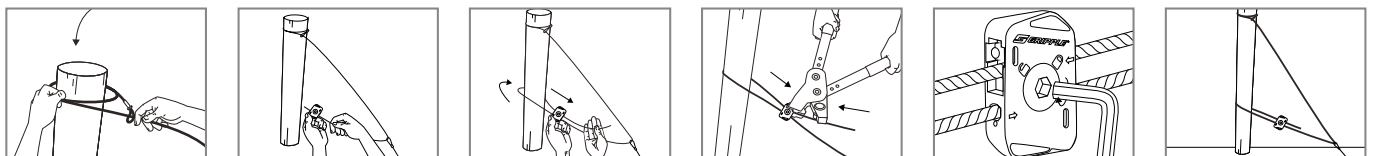
- Before drilling you can also set out the pins by driving them partially into the ground by hand.

CTN Kit



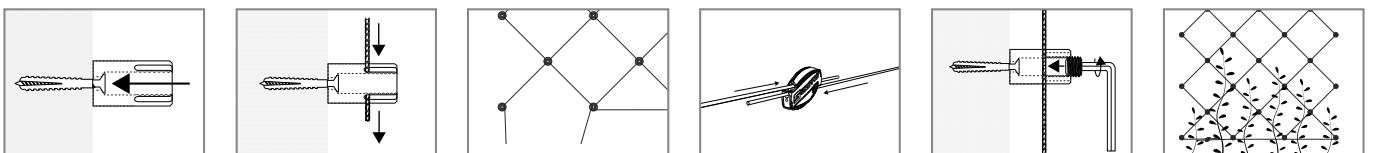
- Use hex key supplied to lock both channels simultaneously.
- Unlock and re-tension without releasing the load.

HLT Kit



- Combine with an Anchor for a complete anchoring solution that's simple and fast to install.

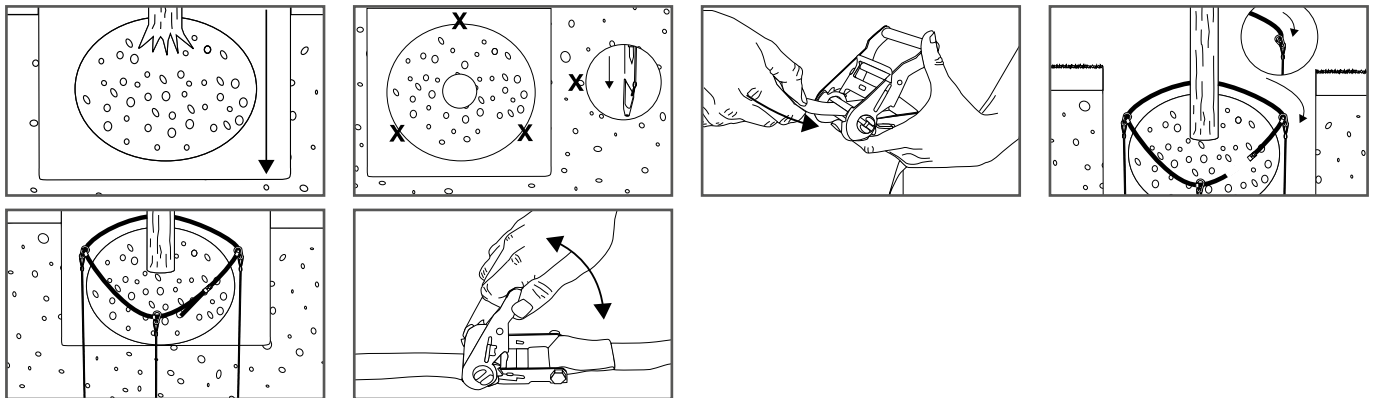
Professional Trellising Kit (PTK)



- Rubber wire caps prevent injuries and protect the ends of the wire, once cut to size.

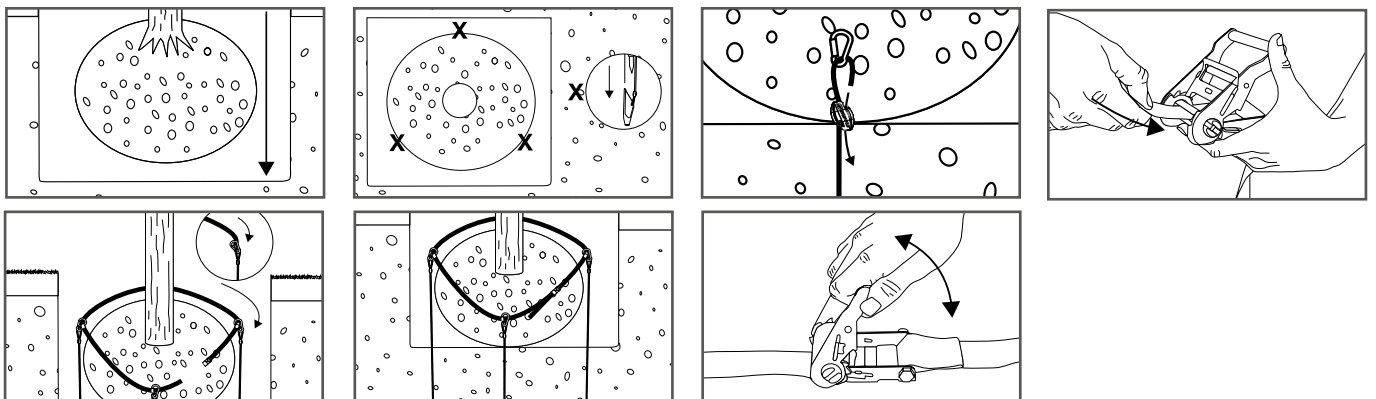
Technical Advice & Installation

Root Ball Kit (RBK)



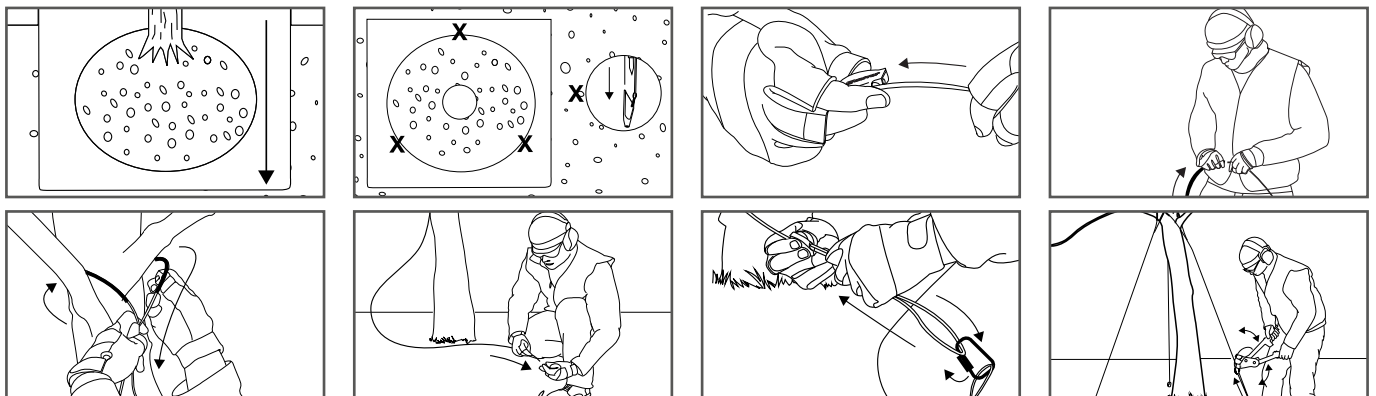
- Always lift the tree by the root ball and never the trunk.
- Ensure the hole is deep enough for root flare to be slightly higher than the surface grade.

Premium Root Ball Kit (PRBK)



- In hard ground where full anchor depth is hard to achieve, the wire length can be adjusted using the Gripple tensioner.

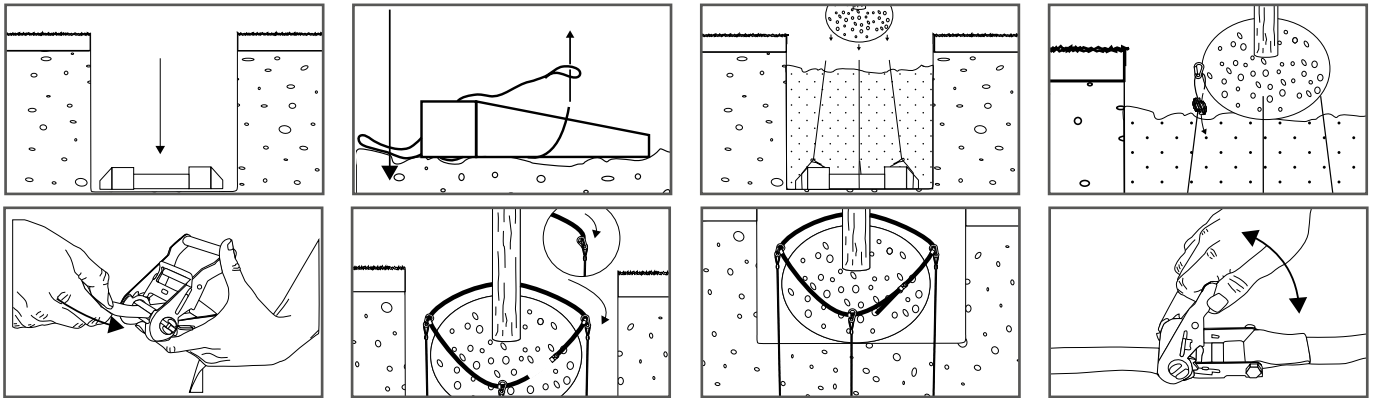
Tree Guying Kit (TGK)



- Tension each of the wire rope as required using the Torq Tool until the tree is vertical.

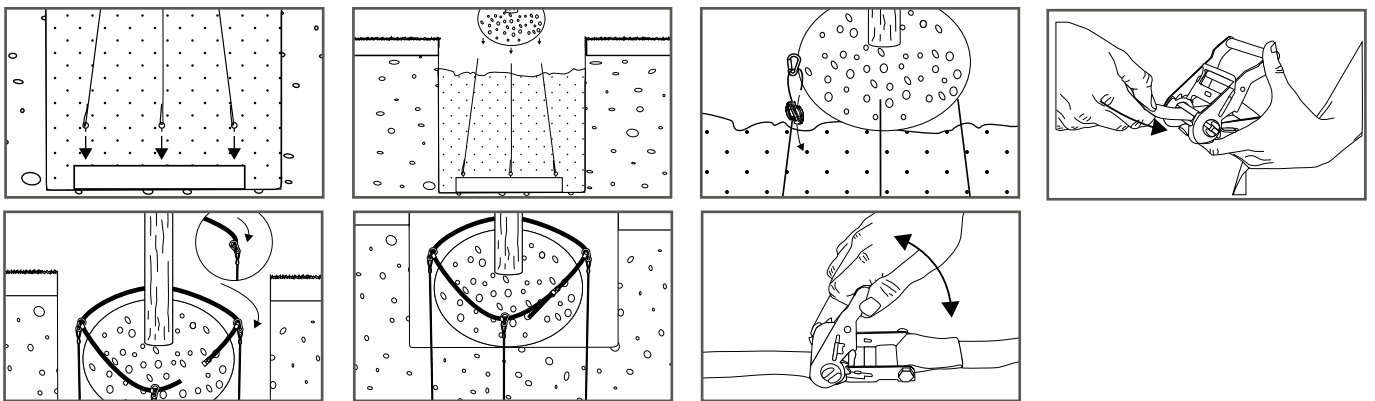
Technical Advice & Installation

DM Kit



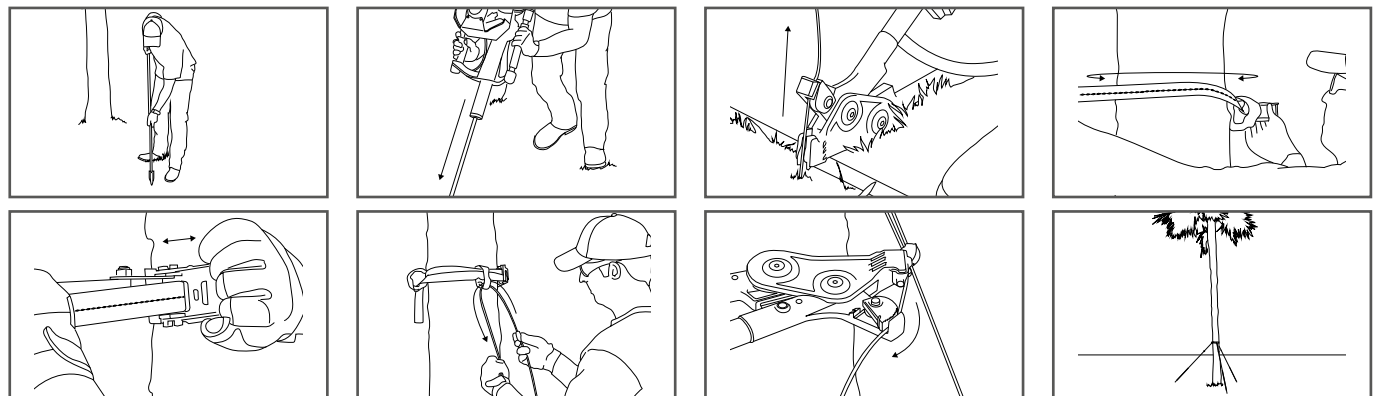
- Use the Gripple tensioner to adjust top loop height to the optimum level.

Concrete Fixing Kit (CFK)



- Use the Gripple tensioner to adjust top loop height to the optimum level.

Palm Bracing Kit (PBK)



- Tension each of the wire rope as required using the Torq Tool until the tree is vertical.

Technical Services



CAD Drawings

CAD drawings are available online for each of our systems. Gripple is committed to providing designers and architects with the content to allow the seamless integration of the required solution into their design.



Design Service

Our team of engineers are on hand to provide technical expertise when specifying our system. The design will incorporate a variety of factors including tree size, root structure, soil type, weather conditions and accessibility, ensuring the solution is fit for purpose.



Technical Submittals

Complete technical submittals can be supplied with each of our products, including best practice guides and design specifications.



On-Site

On site training and demonstrations are available on request, ensuring installers are fully confident when using our system.



Seminars

We offer accredited continual professional development presentations. These presentations provide full technical insight into tree anchoring systems, giving designers the opportunity to learn the benefits and advantages of using our solutions.



Contact

For more information visit **www.gripple.com**

For technical services, including site visits, please call us on: **+33 (0)3 88 95 44 95**



www.gripple.com

info@gripple.com

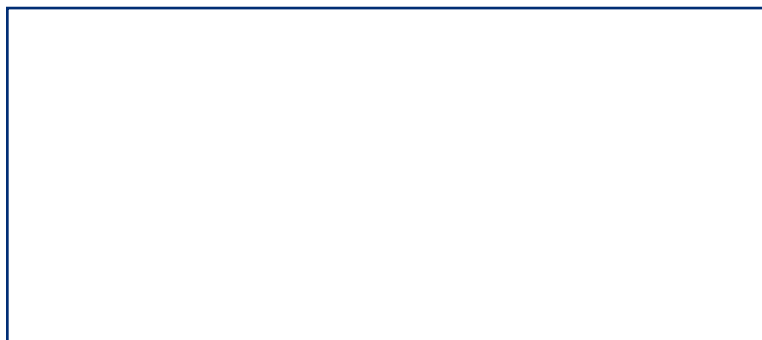
Gripple Europe SARL

1, rue du commerce
BP37
67211 Obernai Cedex
France

T | +33 (0)3 88 95 44 95

F | +33 (0)3 88 95 08 78

E | frinfo@gripple.com



Gripple Ltd (Headquarters)

The Old West Gun Works
Savile Street East
Sheffield S4 7UQ
UK

T | +44 (0)114 275 2255

F | +44 (0)114 275 1155

E | info@gripple.com

Gripple Inc

1611 Emily Lane
Aurora
IL 60502
USA

T | +1 866 474 7753

F | +1 800 654 0689

E | usinfo@gripple.com

Gripple Benelux

1, rue du commerce
BP37
67211 Obernai Cedex
Frankrijk

T | +31 (0)70 363 34 30

F | +31 (0)70 362 18 44

E | bninfo@gripple.com

Gripple Portugal

Estrada Nacional 4
Km 46,5 Pontal
2985-201 Pegões
Portugal

T | +351 265 898 900

F | +351 265 898 879

E | ptinfo@gripple.com

Gripple GmbH

Loherstraße 4
35614 Asslar
Deutschland

T | +49 (0)6441 44447 - 00

E | deinfo@gripple.com

Gripple Italia

1, rue du commerce
67210 Obernai
Francia

T | +33 (0)3 88 95 44 95

F | +33 (0)3 88 95 08 78

E | frinfo@gripple.com

Gripple Industrial Ibérica, S.L.

Ctra. Logroño km 7, 3 Pol. Europa B
50011 Zaragoza
España

T | +34 97 678 32 67

F | +34 97 678 32 68

E | esinfo@gripple.com

Gripple Sp. z o.o.

ul. Chelmszyńska 70
04-247 Warszawa
Polska

T | +48 (0)22 635 62 08

E | plinfo@gripple.com



A GLIDE company



BROC-LSN-ENG-EU-PG

Published 06/2019

Please refer to www.gripple.com for the most up to date user advice and product information.

© 2019 Gripple.

Gripple is a registered trademark of Gripple Limited.

Company registered in England No. 1772901, VAT Reg No. GB 600 1951 88