



TIME SAVED  
**24 HOURS**

MATERIAL SAVINGS  
**€8,740**



TOTAL SAVINGS  
**€9,172**

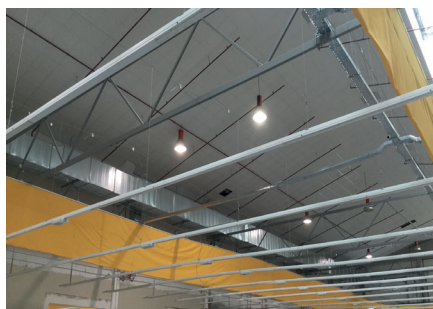
The firm of engineering consultants used suspension-system Gripple for the Electrical, Lighting and Air-Conditioning Installation of Amazon's new building, in Coslada, in Spain.

### Summary

<b>Building type</b>	Industrial building with 4 posts
<b>Building structure</b>	Light-frame construction and sloping roofs
<b>Suspended services</b>	Electrical, Lighting and Air-Conditioning

### Featured Products

<p>CTI</p> 	<p>HF-Express</p> 
--	--



“The key benefits of the use of Gripple suspension-system are the saves of material costs, installation time, the reduction of CO2 emissions and the short delivery times.”

### COST SAVING SUMMARY

	Gripple Solution	Traditional method
Overview	CTI - HF Express	Metal Brackets
Material cost	€18,100	€26,840
Installation time	56 hours	80 hours
Labour rate (per hour)	€18	€18
Total labour cost	€1,008	€1,440
Total cost	€19,108	€28,280





## PROJECT DETAILS

The industrial park in Coslada, northeast of Madrid, has welcomed the Amazon's new industrial building. Located in the town of San Fernando de Hernares in Madrid and close from the airport Madrid Barajas Adolfo Suarez, Coslada is the perfect place for Amazon to expand its presence in Spain. From few years, Amazon has developed its network in Spain and created a thousand of new roles since it started operating in Spain at the end of 2011. The new building has been built in order to expand Amazon's logistic center. The new building is 45 000 square meters big and offer more than 800 new positions.

Gripplle has been contacted to suspend electrical, lighting, and air conditioning in order to ensure the light-frame construction and sloping roofs. For this installation, the Gripplle CTI has been used. CTI product create secure, overhead spans by running high strength wire rope between

two fixing points. The CTI product is visually discreet, lightweight and easy to use, it can be fitted retrospectively. Then, another Gripplle suspension product has been used: HF Express. The HF Express is fast suspension solution, up to 6 times faster to install than a traditional methods. The HF Express can be used by a variety of services.

The installation of the CTI and HF Express in order to suspend electrical, lighting and air conditioning allows to save of materials costs, installation time, and to reduce CO2 emissions comparing to a traditional method. Indeed, material cost is only 18 100 € comparing to 26 840 € for a traditional method. The easy and fast use of CTI and HF Express made the installation almost two times faster than a traditional method with metal brackets.

