

Case Study

BBC Drama Village, Cardiff Bay

The new BBC state-of-the-art studio complex in Cardiff Bay will become the permanent home to BBC dramas such as Casualty, Pobol y Cwm, and Doctor Who. The site hosts nine studios covering 170,000 sq. ft (15,800 sq.m).

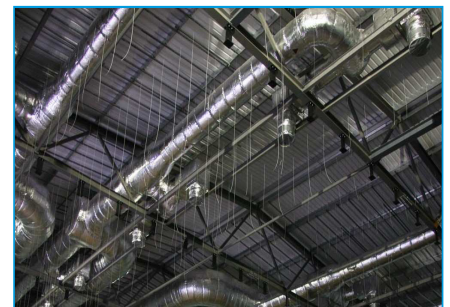
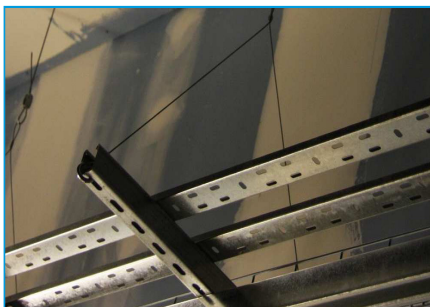
Gripplle offered solutions on two major fronts: Innovative techniques to address supporting services especially when it came to the acoustic panels, and speed. Not only was installation time slashed by more than half, but with no hot works needed, preparation time was minimal.

Building Type	TV
Location	Cardiff Bay
Contractor	Whitehead BS & RKC
Services	M&E, HVAC, Piping and Acoustic
Products	Standard Hanger, Catenary Kit, C-Clip, Univeral Clamp, Trapeze, Y-Fit

Acoustic panel suspension

Richard Kemble Ceilings, a specialist in suspended ceilings, chose to support the metal framework using Gripplle Hangers. Each studio required over 1,000 fixing points to support the load of 45 kg / sq. metre.

The Gripplle lightweight and flexible wire rope system is easy to transport, handle and install. With traditional methods like rod, each studio would have taken over a week to complete, with Gripplle this was reduced to 2 days. With 9 studios to



complete, it would have taken nine weeks with traditional methods, however, with the Gripplle solution it only took four weeks.

“For this challenging job, the Gripplle system proved invaluable on two counts. Firstly, providing an innovative solution not only to a construction problem but to the critical acoustics issue and secondly, the speed of installation was key to meeting deadlines.”

[Project Manager, RKC.](#)

“There is extensive ductwork throughout the facility, both in the nine studios and the support rooms. Using Gripplle gave us great time savings and flexibility throughout the projects.”

[Mark Harries, Project Manager, Whitehead BS.](#)

Case Study

BBC Drama Village, Cardiff Bay

M&E Support

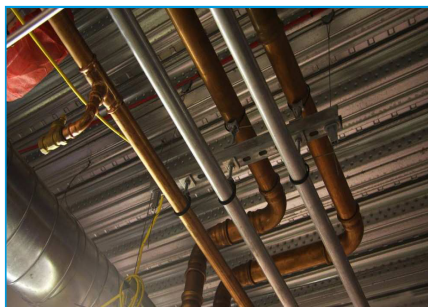
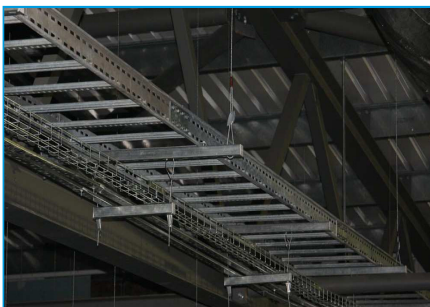
The GripplE Trapeze makes channel suspension secure and durable, reducing time spent working at height, with the easy-to-use integral release button allowing for finite adjustment.

The Catenary kit has been designed specifically for catenary installations or bracing applications – arriving to site as a



complete, ready-to-use kit. On this project the GripplE C-Clip was combined with the Trapeze to suspend pipework.

The GripplE Y-Fit is a single hanger with double hanging points to improve stability and centre of gravity. The Y-Fit was used on containment, but can also be used with cable tray. One leg can be detached to allow access to cables.



Ductwork support

When installing large diameter spiral ducting at height, reducing time spent working at height is important to improve health and safety. GripplE Standard Hangers were pre-installed by quickly looping over the purlins, ready to receive the duct. GripplE Standard Hangers were used throughout the facility on spiral duct, with and without insulation.

On rectangular duct work, the GripplE Standard Hanger was combined with the corner saddle, which is offered both in a magnetic and non-magnetic version.

Pipework Support

The GripplE Universal Clamp fits pipe diameters from 3/8" to 2-1/2". This 'one-size-fits-all', coupled with the fast-fit installation, has proved very useful on the BBC Drama Village project.

Not only does the 'one-size-fits-all' mean that there is just one size to stock rather than numerous sizes of clamps lying around the site, but it also takes the hassle out of installing different pipe diameters. With no tools required for installation, the self-click closure allows for easy and fast fixing.