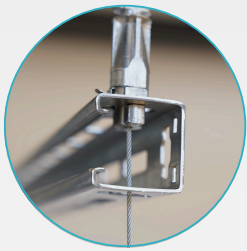
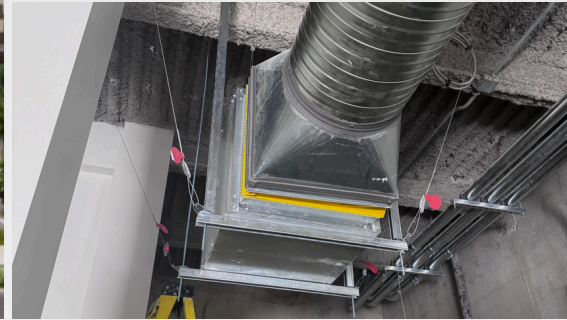


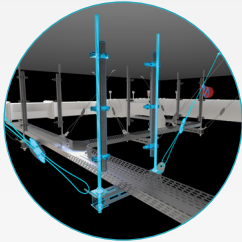
Quw'utsun Valley Hospital Victoria, BC



UniGrip™

What is the Quw'utsun Valley Hospital?

The Quw'utsun hospital project is a 600,000 sqft large-scale replacement hospital aimed at modernizing healthcare delivery in the Cowichan region. It stands out for combining expanded medical capacity, Indigenous cultural integration, and low-carbon design, making it both a healthcare upgrade and a symbolic project tied to reconciliation and sustainability.



TecLoc (Seismic)

This project will be the first healthcare facility in BC to be fully electric & targeting LEED Gold & Zero Carbon Building Standards.

In collaboration with Houle Electric & ViaDuct Sheet Metal, Gripple's solutions streamlined multiple processes for MEP installation.

“Gripple’s Territory Managers have been very proactive & helpful in the product selection & design. Kept us very lean and ensured high safety standards, we will continue to use Gripple in the future.”

Chris Williams, Senior Project Manager - Houle Electric



Scan the QR Code to view the
full project breakdown

Email: cainfo@gripple.com for any enquiries



www.gripple.com/en-ca/