

# TecLoc Beam Clamp

## Seismic Structural Bracing Attachment

**A seismic load rated beam clamp offering bracing attachment to beams and bar joists.**

- **Safe**  
Industry tested and approved
- **Ease of use**  
Single-bolt design speeds up install
- **Strong**  
Supports high Load and Resistance Factor Design values
- **Shear-off bolt**  
Breaks at optimal torque allowing for easy on site inspection
- **Compatible**  
Fits beam flanges up to 1 1/4" / 31.75 mm thick
- **Adaptable**  
Performs in 0–90° arrangements



## Product Specification

### Material

- Clamp Body - Carbon Steel
- 1/2 " UNC Bolt - Carbon Steel
- 1/2 " UNC Nut - Carbon Steel
- 1/2 " Washer - Carbon Steel

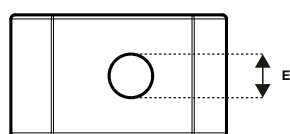
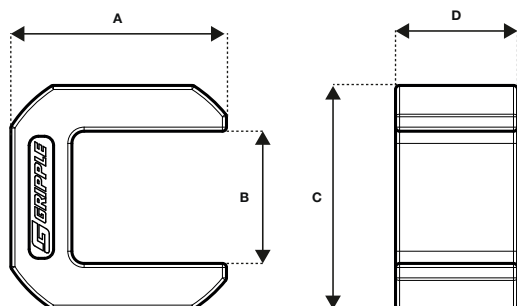
## Approvals



ER577

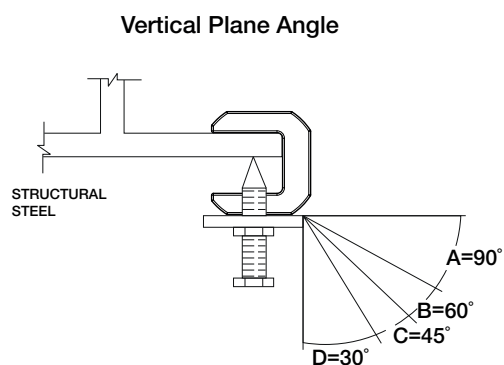
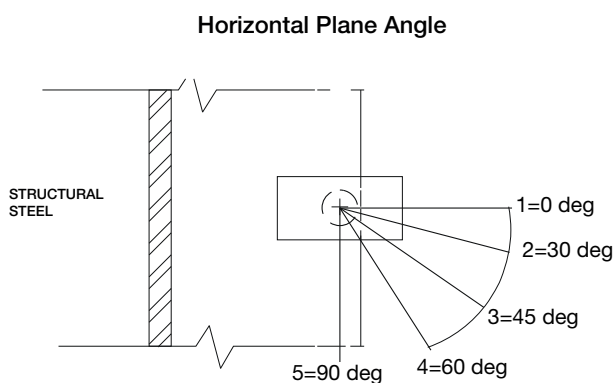
Tested in accordance with ASHRAE 171  
IAPMO Approved for compliance with IBC 2024  
Approval Report: IAPMO ER-577

## Design & Dimensions



	in	mm
A	2.1	53
B	1.25	31.75
C	2.17	55
D	1.2	31
E	1/2 " UNC	1/2 " UNC

## Load and Resistance Factor Design Values



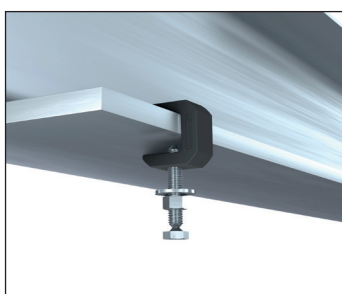
Horizontal plane angle in degrees (from positive x axis)	Vertical plane angle (from horizontal)	Design Strengths (LRFD) in lbf	Design Strengths (LRFD) in kgf	Allowable Load (ASD) in lbf	Allowable Load (ASD) in kgf
0	30	3989	1809	2672	1212
	45	2640	1197	1768	802
	60	2877	1305	1927	874
	90	2504	1136	1677	761
30	30	4407	1999	2952	1339
	45	2960	1342	1983	899
	60	3168	1437	2122	962
	90	2846	1291	1906	864
45	30	4616	2093	3092	1402
	45	3120	1415	2090	948
	60	3314	1503	2220	1007
	90	3017	1368	2020	916
60	30	4825	2188	3232	1466
	45	3280	1488	2197	996
	60	3459	1569	2317	1051
	90	3188	1446	2135	968
90	30	5244	2378	3513	1593
	45	3600	1633	2412	1094
	60	3751	1701	2513	1140
	90	3530	1601	2365	1073

## Packaging

Product Code:	GSBC-125
Box Quantity:	15
Packed Weight	16.3 lbs / 7.4 kg

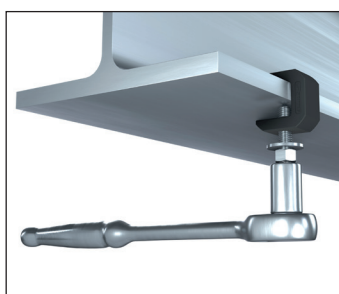
## Installation

1



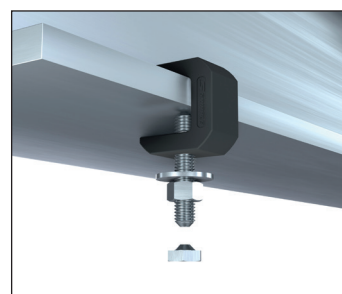
Position the clamp on the beam in desired location and hand tighten the bolt. Ensure the nut and washer are loose on the bolt.

2



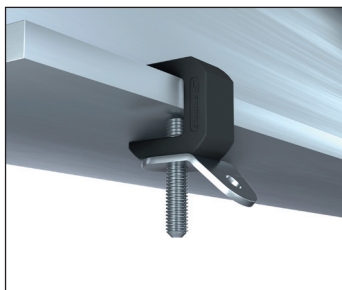
Tighten the bolt using a torque wrench or impact driver until the head shears off. Bolt will shear-off when torqued to 29.5 lb-ft (40Nm). The bolt tip will be securely embedded into the beam.

3



Remove the nut and washer to allow for the install of the bracing bracket.

4



Position the bracing bracket on the underside of the clamp in the plane desired, slide washer and then tighten the nut to secure bracket in place.

5



When the bracket is fixed in place the installation is complete.

## Key Recommendations

Failure to comply with these recommendations may result in product malfunction and possible damage to property or person and will invalidate the GripplE guarantee. GripplE products are guaranteed to be free from defects in materials and workmanship in accordance with our terms and conditions. No other warranty, whether express or implied, including any warranty of merchantability or fitness for purpose shall exist in connection with the sale or use of any GripplE product.

Full technical information and installation instructions should be obtained directly from GripplE Limited, GripplE Europe, GripplE Inc., GripplE Japan, GripplE Poland, GripplE India, GripplE Germany, any regional GripplE office, or via our website [www.gripplE.com](http://www.gripplE.com).



### INSTALLATION

Do not walk or stand on the GripplE product installation. GripplE products must not be used for personal suspension, fall protection or harnessing people.



### STORING

Do not store the product outdoors, or in damp or abnormal conditions.



### LOADS

Always operate the product within its stated safe working load range. Suspend static loads only. Do not subject to shock loading. Do not adjust under load.



### SWIMMING POOLS

Not suitable for swimming pools.



### REPAIR, MODIFICATION AND RE-USE

Do not repair, modify or re-use GripplE products. If you have any queries regarding product performance, please contact [TechnicalServices@gripplE.com](mailto:TechnicalServices@gripplE.com)