

SidePro

Heavy Duty Side-Loaded Cantilever System

Side-loading bracketry system with push-button adjustment for fast & easy installation of high-load electrical and mechanical services.

■ Adjustable

Push-button cartridge allows the bracket to be adjusted to the correct height on the pendant, without the need for tools

■ Easy Installation

Minimal spacing between the pendant holes assists with levelling on uneven surfaces

■ Space-Saving

High-load services can be side-loaded and brackets can be multi-tiered to accommodate additional suspensions

■ Strong

Up to 200kg load rating for Single Pendant and 400kg for Back-to-Back Pendant



Product Specification

Material

- Bracket Assembly - Zinc Plated Steel
- Pendant Assembly - Zinc Plated Steel

Safe Working Load

Single drop pendant system load*	200 kg
Back-to-Back pendant system load*	400 kg
Cantilever bracket max load (UDL)	200 kg
Cantilever bracket max load (SPL)	100 kg

- 1.7 Safety Factor - BS EN 61537:2007 - 'Cable management. Cable tray systems and cable ladder systems
- *For further loading information, combination loading or fire testing information please contact Gripple's Technical Services

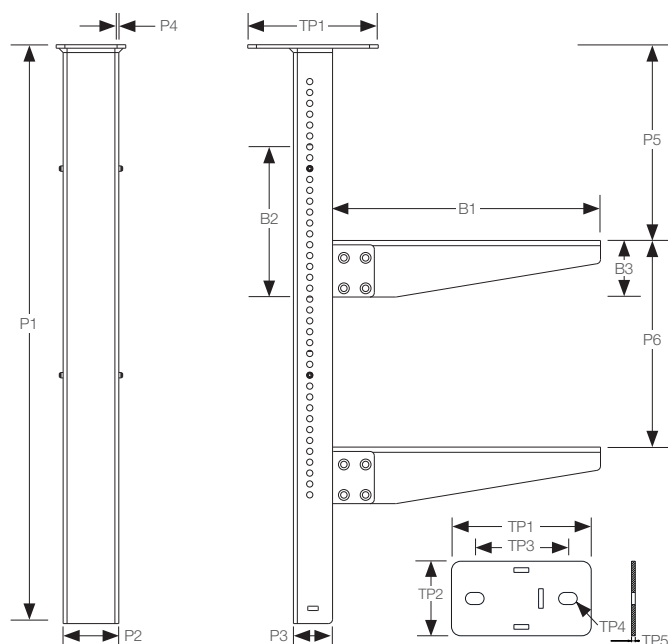
Approvals

- MPA Braunschweig - Fire tested and certified to EU Standard DIN 4102-12 (Fire behavior of building materials and building components- Part 12: Circuit integrity maintenance of electrical cable systems)



Design & Dimensions

Single Pendant & Bracket Specification



Single pendant system load*	200 kg
Cantilever bracket max load (UDL)	200 kg
Cantilever bracket max load (SPL)	100 kg

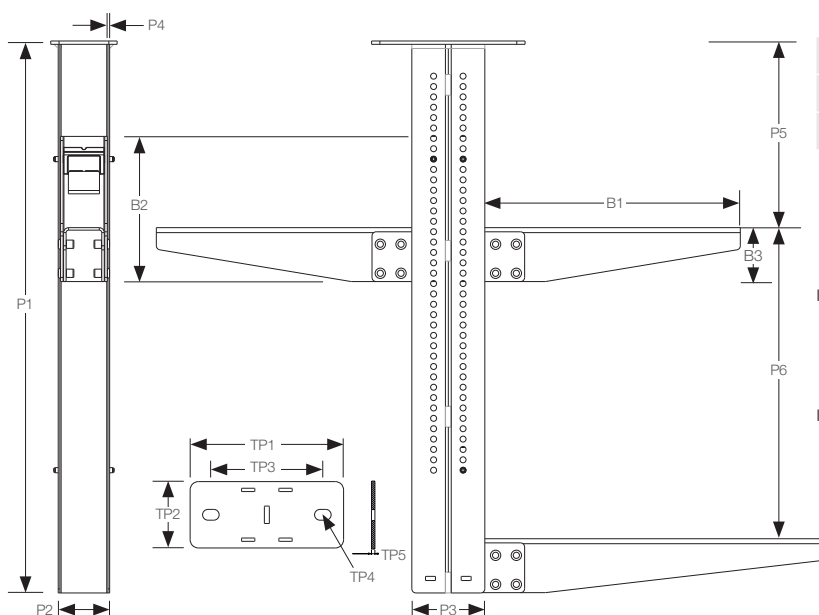
- 1.7 Safety Factor - BS EN 61537:2007 - 'Cable management. Cable tray systems and cable ladder systems
- For further loading information, combination loading or fire testing information please contact Gripple's Technical Services

	P1 Pendant Drop Length	P2 Pendant Depth	P3 Pendant Width	P4 Pendant Thickness	P5 Soffit to service height range	P6 Minimum distance between brackets
Single Pendants	mm	mm	mm	mm	mm	mm
SIDEPRO-SP-200	265	64	45	3	125-200	187.5
SIDEPRO-SP-300	365	64	45	3	125-300	187.5
SIDEPRO-SP-400	465	64	45	3	125-400	187.5
SIDEPRO-SP-500	565	64	45	3	125-500	187.5
SIDEPRO-SP-600	665	64	45	3	125-600	187.5
SIDEPRO-SP-700	765	64	45	3	125-700	187.5
SIDEPRO-SP-800	865	64	45	3	125-800	187.5
SIDEPRO-SP-900	965	64	45	3	125-900	187.5
SIDEPRO-SP-1000	1065	64	45	3	125-1000	187.5
SIDEPRO-SP-1250	1315	64	45	3	125-1250	187.5
SIDEPRO-SP-1500	1565	64	45	3	125-1500	187.5

	B1 Useable width	B2 Bracket Height (O/All)	B3 Bracket Height	Material Thickness
Cantilever Bracket	mm	mm	mm	mm
SIDEPRO-B-100	108	175	65	3
SIDEPRO-B-200	208	175	65	3
SIDEPRO-B-300	308	175	65	3
SIDEPRO-B-400	408	175	65	3
SIDEPRO-B-500	508	175	65	3
SIDEPRO-B-600	608	175	65	3

	TP1	TP2	TP3	TP4	TP5
Top Plate	mm	mm	mm	mm	mm
	150	80	100	130	4

Back to Back Pendant & Bracket Specification



Back-to-Back pendant system load*	400kg
Cantilever bracket max load (UDL)	200kg
Cantilever bracket max load (SPL)	100kg

- 1.7 Safety Factor - BS EN 61537:2007 - 'Cable management. Cable tray systems and cable ladder systems
- For further loading information, combination loading or fire testing information please contact Gripple's Technical Services

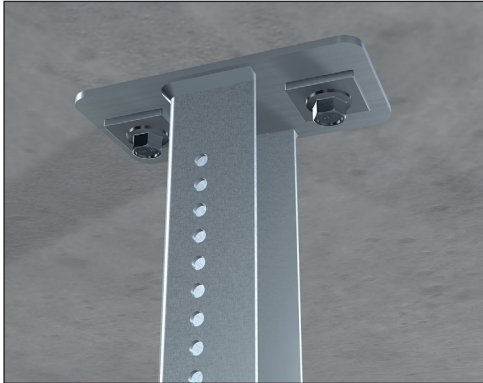
	P1 Pendant Drop Length	P2 Pendant Depth	P3 Pendant Width	P4 Pendant Thickness	P5 Soffit to service height range	P6 Minimum distance between brackets
Back-to-back Pendants	mm	mm	mm	mm	mm	mm
SIDEPRO-DP-200	265	62	88	2	125-200	187.5
SIDEPRO-DP-300	365	62	88	2	125-300	187.5
SIDEPRO-DP-400	465	62	88	2	125-400	187.5
SIDEPRO-DP-500	565	62	88	2	125-500	187.5
SIDEPRO-DP-600	665	62	88	2	125-600	187.5
SIDEPRO-DP-700	765	62	88	2	125-700	187.5
SIDEPRO-DP-800	865	62	88	2	125-800	187.5
SIDEPRO-DP-900	965	62	88	2	125-900	187.5
SIDEPRO-DP-1000	1065	62	88	2	125-1000	187.5
SIDEPRO-DP-1250	1315	62	88	2	125-1250	187.5
SIDEPRO-DP-1500	1565	62	88	2	125-1500	187.5

	B1 Useable width	B2 Bracket Height (O/All)	B3 Bracket Height	B4 Material Thickness
Cantilever Bracket	mm	mm	mm	mm
SIDEPRO-B-100	108	175	65	3
SIDEPRO-B-200	208	175	65	3
SIDEPRO-B-300	308	175	65	3
SIDEPRO-B-400	408	175	65	3
SIDEPRO-B-500	508	175	65	3
SIDEPRO-B-600	608	175	65	3

	TP1	TP2	TP3	TP4	TP5
Top Plate	mm	mm	mm	mm	mm
	185	80	135	130	4

Installation - Single Pendant

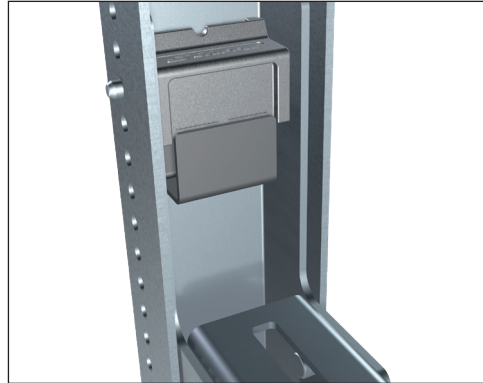
1



To install the pendant, mark out the hole centre locations, using the top plate dimensions (page 2). Drill the fixing holes to the required depth and diameter*. Position the single pendant over the drilled holes and anchor into place, if necessary use a square washer underneath the fixing.

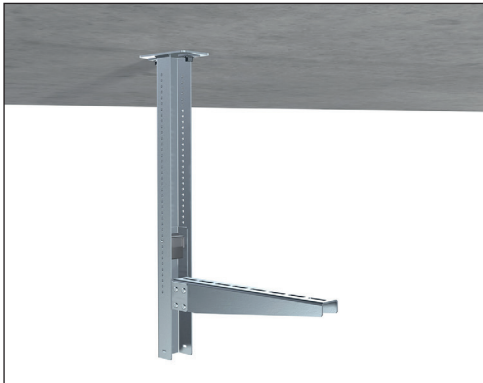
* Fixing type, diameter and embedment depth subject to required loading combination, seek advice from Gripple's Technical Services.

2



To install the bracket, support the bracket's weight and press the cartridge's button to retract the fixing pins. Hold the cartridge button whilst locating the bracket into the pendant's channel. Release the cartridge button to allow the cartridge's pins to locate the pendant's holes (ensuring that the pin has passed all the way through the hole and the locked line is visible).

3



To adjust the bracket's height, support the bracket's weight, press and hold the cartridge button to retract the fixing pins whilst adjusting the bracket to the correct height. Release the pins and allow them to locate the hole, locking them at the correct height. Ensure the pins have passed all the way through the hole and the witness line is fully visible.

4



Repeat steps 1-3 to install additional brackets as necessary.

Installation - Back-to-Back Pendant

1

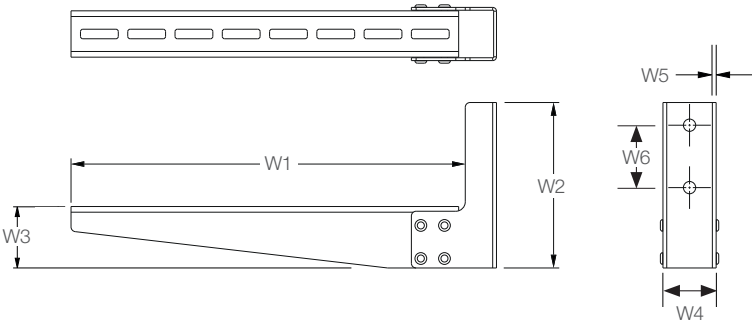


Repeat steps 1-3 above for the installation of Back-to-Back pendants. When installing multiple brackets at different heights, ensure a 187.5mm gap is left between horizontal supports.

Installation Guidance:

- Bracket arm is only to be installed with the slots facing upwards.
- System is not to be installed as a pre-built assembly. Installation steps to be followed as above.

Wall-Fixed Brackets



Cantilever bracket max load (UDL)	200kg
Cantilever bracket max load (SPL)	100kg

- 1.7 Safety Factor - BS EN 61537:2007 - 'Cable management. Cable tray systems and cable ladder systems

	W1 Useable Width	W2 Bracket Height (O/All)	W3 Bracket Height	W4 Bracket Depth	W5 Material Thickness	W6 Hole Centres	W7 Hole ø
Bracket	mm	mm	mm	mm	mm	mm	mm
SIDEPRO-WFB-100	117	175	65	56	3	66	13
SIDEPRO-WFB-200	217	175	65	56	3	66	13
SIDEPRO-WFB-300	317	175	65	56	3	66	13
SIDEPRO-WFB-400	417	175	65	56	3	66	13
SIDEPRO-WFB-500	517	175	65	56	3	66	13
SIDEPRO-WFB-600	617	175	65	56	3	66	13

Installation - Wall Bracket



Position the bracket against the wall and mark the fixing locations. Drill the fixing holes to the required depth and diameter*

* Fixing type, diameter and embedment depth subject to required loading combination, seek advice from Gripple's Technical Services.



Use a square washer and fixings to attach the bracket to the wall.

Installation Guidance:

- Bracket arm is only to be installed with the slots facing upwards.

Key Recommendations

Failure to comply with these recommendations may result in product malfunction and possible damage to property or person and will invalidate the GripplE guarantee. GripplE products are guaranteed to be free from defects in materials and workmanship in accordance with our terms and conditions. No other warranty, whether express or implied, including any warranty of merchantability or fitness for purpose shall exist in connection with the sale or use of any GripplE product.

Full technical information and installation instructions should be obtained directly from GripplE Limited, GripplE Europe, GripplE Inc., GripplE Japan, GripplE Poland, GripplE India, GripplE Germany, any regional GripplE office, or via our website www.gripplE.com.



LOADS

Always operate the product within its stated safe working load range. Suspend static loads only. Do not subject to shock loading. Do not adjust under load.



PAINTING

Do not paint the system prior to installation. Ensure the system is in its final position prior to applying any paint.



LIFTING

Do not use for lifting, either by crane or as part of a pulley system.



STORING

Do not store the product outdoors, or in damp or abnormal conditions.



IMPACT

If there is potential for impact on the suspended services, seek advice from GripplE Ltd. Technical Services prior to installation.



REPAIR, MODIFICATION AND RE-USE

Do not repair, modify or re-use GripplE products. If you have any queries regarding product performance, please contact TechnicalServices@gripplE.com



SWIMMING POOLS

Not suitable for swimming pools.