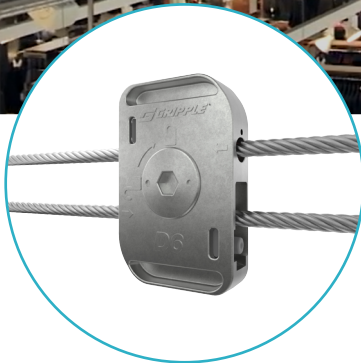


Marks & Spencer

Cheshire Oaks, Ellesmere Port, UK

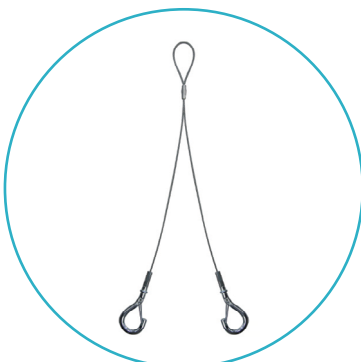
GRIPPLE
Change the game



Catenary Kit



Standard Hanger



Y-Fit Accessory

Project Type	Retail
Building Services	Electrical, Lighting, Signage, HVAC and Pipework
Gripple Products	Catenary Kits, Standard Hangers, Y-Fit Accessories and Universal Brackets
Location	Ellesmere Port, UK

Gripple supported Marks & Spencer (M&S) with their flagship 'Eco Store' at Cheshire Oaks in Ellesmere Port. During the M&E fit-out, Gripple **Catenary Kits**, **Standard Hanger** wire rope kits, **Y-Fit Accessories** and **Universal Brackets** were utilised to install lighting, electrical containment, air conditioning units, pipework and signage systems throughout the store.

The 42,000 sqm development has a glulam and steel beam structure with a large exposed ceiling across the shop floor. The long drop lengths from the roof structure to the lighting services below ensures the building has an open plan space – the client was keen to minimise the use of traditional M&E suspensions and opted to use Gripple's aesthetically pleasing wire rope suspension kits which meant all building services appeared to be 'floating' and became almost invisible from ground level.



Embodied Carbon Saved
128 tonnes



Material Weight Saved
48 tonnes



Scan the QR Code for more info on our game-changing M&E solutions!

Email: sales@gripple.com for any enquiries



www.gripple.com

Gripple's **Catenary Kits** were used to suspend lighting systems across the M&S store. Catenary Kits allowed the installing contractor to create secure, overhead spans between two horizontal fixing points which was ideal for this project as there was limited vertical anchor points due to the glulam beams above. Gripple Catenary Kits also require much less components compared to traditional M&E suspension methods such as threaded rod and channel supports which gave the finished install a more discreet look while also reducing the amount of material needed on this 'Eco Store' project.

"Gripple is about 95% less carbon intensive to produce than standard suspension systems so contractors can greatly reduce their embodied carbon in a building by using a wire suspension system rather than a traditional method." - Technical Manager, Gripple



Standard Hanger wire rope kits were used throughout the project to suspend a variety of services from electrical services to air conditioning units to in-store signage. The UK-manufactured kits complement open soffit spaces and are up to six times faster to install than traditional suspension methods. Standard Hanger kits require much less components than traditional M&E supports and require no tools or 'hot works' to install them on-site which helped to improve health and safety on-site. Due to large drop lengths, the installing contractor was required to work at height for extended periods during the project. Gripple's faster installation method ensured there was significantly less time spent working at height which further helped to mitigate any health and safety issues from occurring on-site.

As part of the project, Gripple offered a technical design package, pull tests and toolbox talks for the installing contractor to ensure the on-site team had full confidence and support throughout the build. Gripple products were implemented throughout to create a light and airy space to enhance customers' shopping experience whilst also ensuring M&S met their eco targets for the build.



Scan the QR Code for more info on
our game-changing M&E solutions!

Email: sales@gripple.com for any enquiries



www.gripple.com