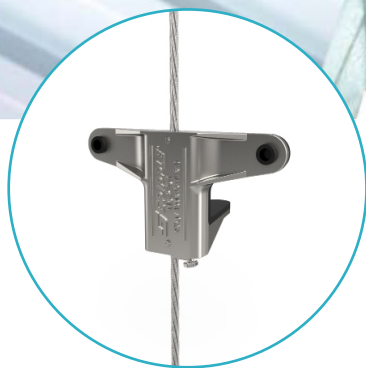


# Waitrose

Wichelstowe, Swindon, UK



Duct Trapeze



Standard Hanger

Project Type	Retail
Building Services	HVAC, Pipework and Electrical
Gripple Products	Duct Trapeze, Standard Hangers, Y-Fit Accessories, Universal Clamps and Universal Brackets
Location	Swindon, UK

Waitrose's Wichelstowe store has helped support the Swindon community and boost the local economy within Wiltshire. During the build stage, Gripple supplied a wide range of game-changing suspension systems including **Standard Hanger** wire rope kits, **Universal Brackets**, **Duct Trapeze** wire rope kits, **Y-Fit Accessories** and **Universal Clamps**. This allowed contractors on-site to seamlessly suspend HVAC, pipework and electrical services.

The 39,000 sqm supermarket also includes a 60-seat café, winery and bakery. Within the store, five cold rooms and 67 refrigeration units are supplied by a chilled water system which has been securely suspended by Gripple's wire rope suspension systems.

***"The Gripple system is excellent for cleanliness, time saving and safety, so the change from traditional methods to Gripple was an easy choice to make."*** Site Supervisor



**Time Savings**  
282 Hours



**Working Weeks Saved**  
7 Weeks



**Labour Saved**  
£5,640



Scan the QR Code for more info on our game-changing M&E solutions!

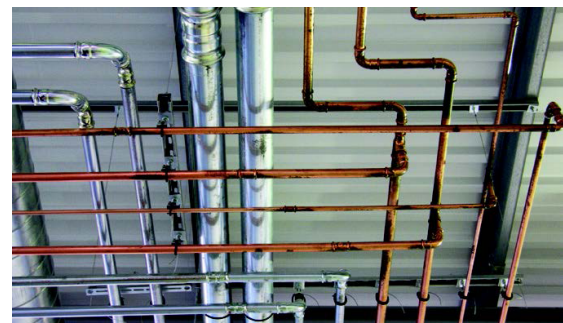
Email: [sales@gripple.com](mailto:sales@gripple.com) for any enquiries



[www.gripple.com](http://www.gripple.com)

Gripple's **Duct Trapeze** made light work of suspending rectangular ducting by spreading the load of HVAC services across three fixing points. During installation, building services can be adjusted quickly with no tools required. Despite being a quick method, there is no compromise on system strength - Duct Trapeze kits have a safe working load of 45kg with a 5:1 safety factor. Hot works and material preparation is not needed on-site as all Gripple wire rope kits are supplied in pre-cut wire lengths with pre-crimped end fixings so they can be installed straight from the box.

For suspending pipework services, Gripple's **Universal Clamps** and **Universal Brackets** proved invaluable to the mechanical contractor. Designed to suspend all types of piping up to 6" diameter, the Universal Clamp replaces the need for 13 traditional pipe ring sizes. No cutting, filing, or hot works are needed to prepare Universal Clamps on-site so the mechanical contractor saved time and improved safety as much less time was spent working at height during the install process and the removal of hot works further mitigated any health and safety issues from occurring on-site.



Within the Wichelstowe store, suspending spiral ductwork became straightforward as the installation team opted to use Gripple's **Standard Hanger** wire rope kits. Standard Hanger kits were also used alongside **Y-Fit Accessories** for efficiently suspending electrical containment - the double hanging points improved stability and ensured only one drop was required instead of two. Furthermore, during installation, one leg can be easily detached which is helpful for gaining better access to services. Y-Fit Accessories are available with a range of end fixings to suspend various services, and can be manufactured in a variety of sizes to suit longer drops.

All Gripple suspension solutions are UK-manufactured and arrived to Swindon pre-assembled and pre-cut, eliminating the need for hot works permits which ensured the installation team could speed up their build schedule while also reducing health and safety risks on this busy construction site.



Scan the QR Code for more info on  
our game-changing M&E solutions!

Email: [sales@gripple.com](mailto:sales@gripple.com) for any enquiries



[www.gripple.com](http://www.gripple.com)