

# Game Changing Solutions for Concrete Anchors







## Product Led, People Powered

**Established in 1989, our innovative, engineered solutions are helping customers to overcome their toughest daily challenges, achieving their goals faster and easier.**

**We are no ordinary business. We do almost everything differently.**

**100% owned by our employees, we're also committed to changing the game by making a positive impact in our communities around the world. We're a force for good, as certified by B Corp.**

## Change the Game

### **1 - 100% employee owned**

Our empowering employee-ownership model means everyone is invested. Success for our global customers means success for us. We are all shareholders, inspired to design, manufacture, and deliver better solutions.

### **2 - Game-changing innovators**

Our vision is to engineer game-changing products and systems that make a difference for more global customers. To keep us on track, we hold ourselves accountable to deliver a fifth of all sales from new innovations.

### **3 - Helping customers do more with less**

We solve customers' real-world problems with simplified engineered solutions. Whatever the application, our innovations deliver efficient, sustainable solutions that have a positive impact on global customers' routine tasks.





#### 4 - Vertically integrated

As an award-winning global manufacturer, we create finished Gripple solutions from components we produce in-house, on machinery we design and build ourselves. We're a trusted partner for our customers, able to deliver quality, reliability, and value.

#### 5 - A force for good

It's the Gripple way to do business differently. Not just to deliver profit, but to share the benefits of global sustainable growth with our customers, communities, and employee owners. As a certified B Corp, we meet the highest standards of social and environmental performance.

## Contents

Vertically Integrated Manufacturing	4
Changing the Game	5
The Complete Gripple Solution	6
Which Gripple Solution is Right for You?	8
TCI Range Overview	10
Spider® Range Overview	12
Attachments	14
Accessories	16
Gripple Concrete Inserts – Features and Benefits	18
Gripple in Action	20
Technical Support	22





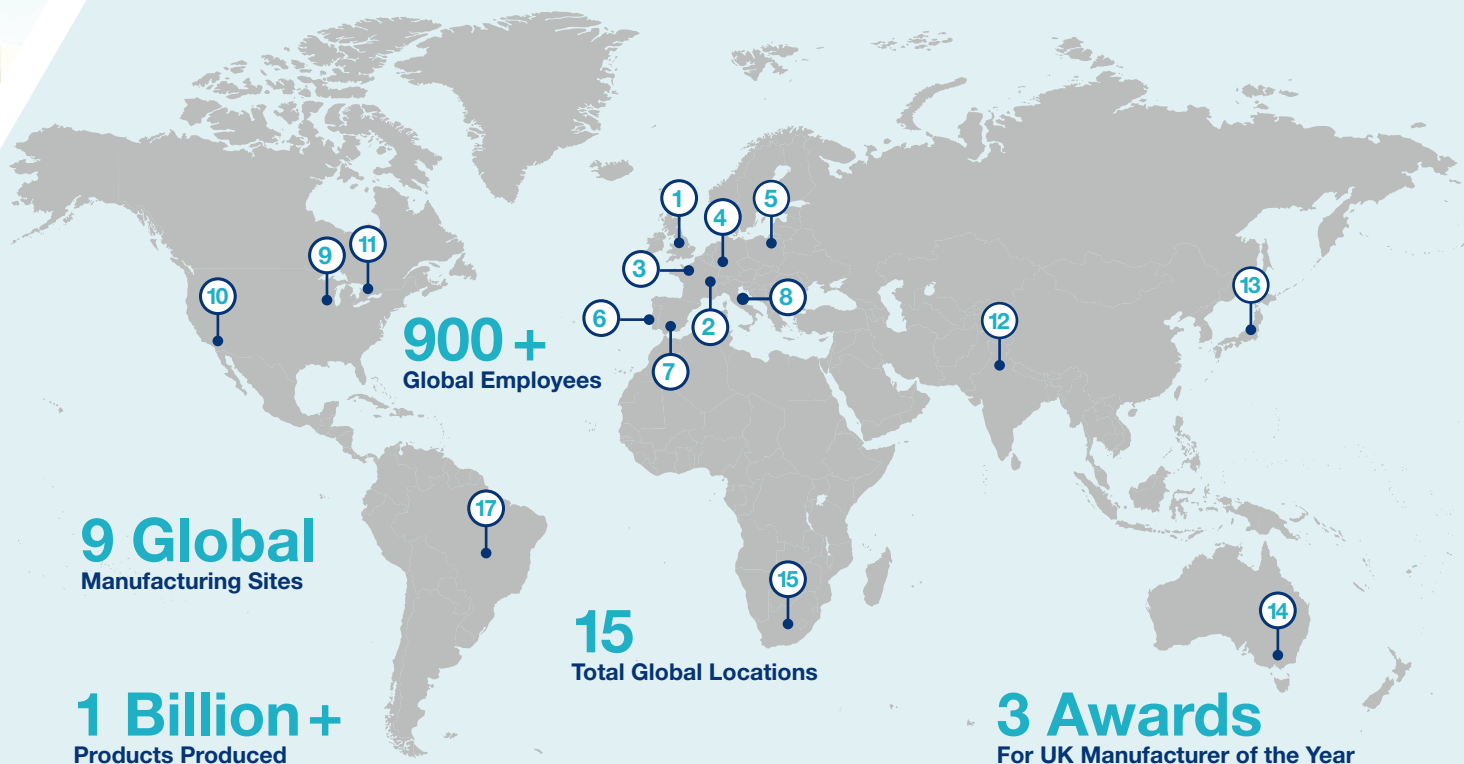
## Vertically Integrated Manufacturing

An award-winning manufacturer, we create finished Gripple solutions from components we also produce in-house. Our vertically integrated operations produce our own die castings, injection moulded components, steel pressings, and wire accessories. We even design and build our own automated manufacturing machinery!

Through ways of working including lean manufacturing and just-in-time inventory management, we ensure streamlined processes and maximum value delivery. Our employee owners are empowered to identify opportunities for continuous improvement, which result in greater efficiencies, better quality, and improved customer satisfaction.

Continual investment in our manufacturing and supply chain means we're a trusted partner for our customers, able to consistently deliver quality, reliability, and value.





## Changing the Game in 85 Countries Worldwide

Our global manufacturing and distribution footprint has been designed to deliver our innovative Gripple solutions, on-time, to over **8,000 customers**, at more than **16,000 drop points**, in **85 countries** worldwide. There are over **900 employee owners** around the globe, and every one of our sites is united by the commitment to help our customers. Some of our original customers have become partners in Europe, Asia, and Oceania, to strengthen our global supply chain and deliver value every day.

### Gripple United Kingdom

**1** Global Head Office – Sheffield, UK

### Gripple Europe:

**2** Gripple Europe Head Office – Obernai, France

**3** Paris, France

**4** Aßlar, Germany

**5** Warszawa, Poland

### Europe Partners:

**6** Gripple, Portugal

**7** Gripple, Spain

**8** Gripple, Italia

### Gripple INC:

**9** Gripple INC Head Office – Aurora, Illinois

**10** Los Angeles, California

### Gripple Rest of the World:

**11** Toronto, Canada

**12** New Delhi, India

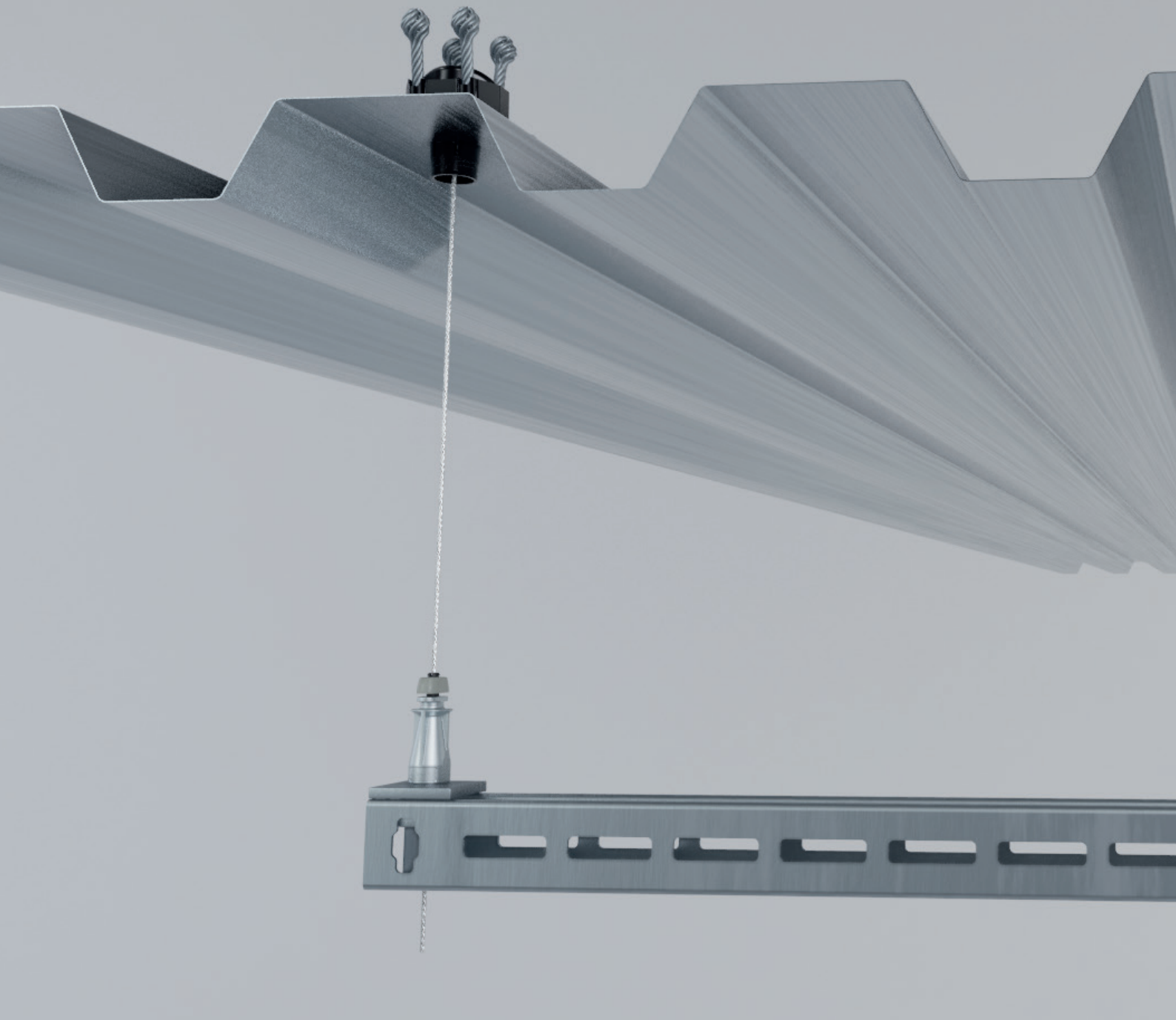
**13** Kobe, Japan

### Rest of the World Partners:

**14** Gripple Australia – Victoria

**15** Gripple South Africa





## The Complete Gripple Solution

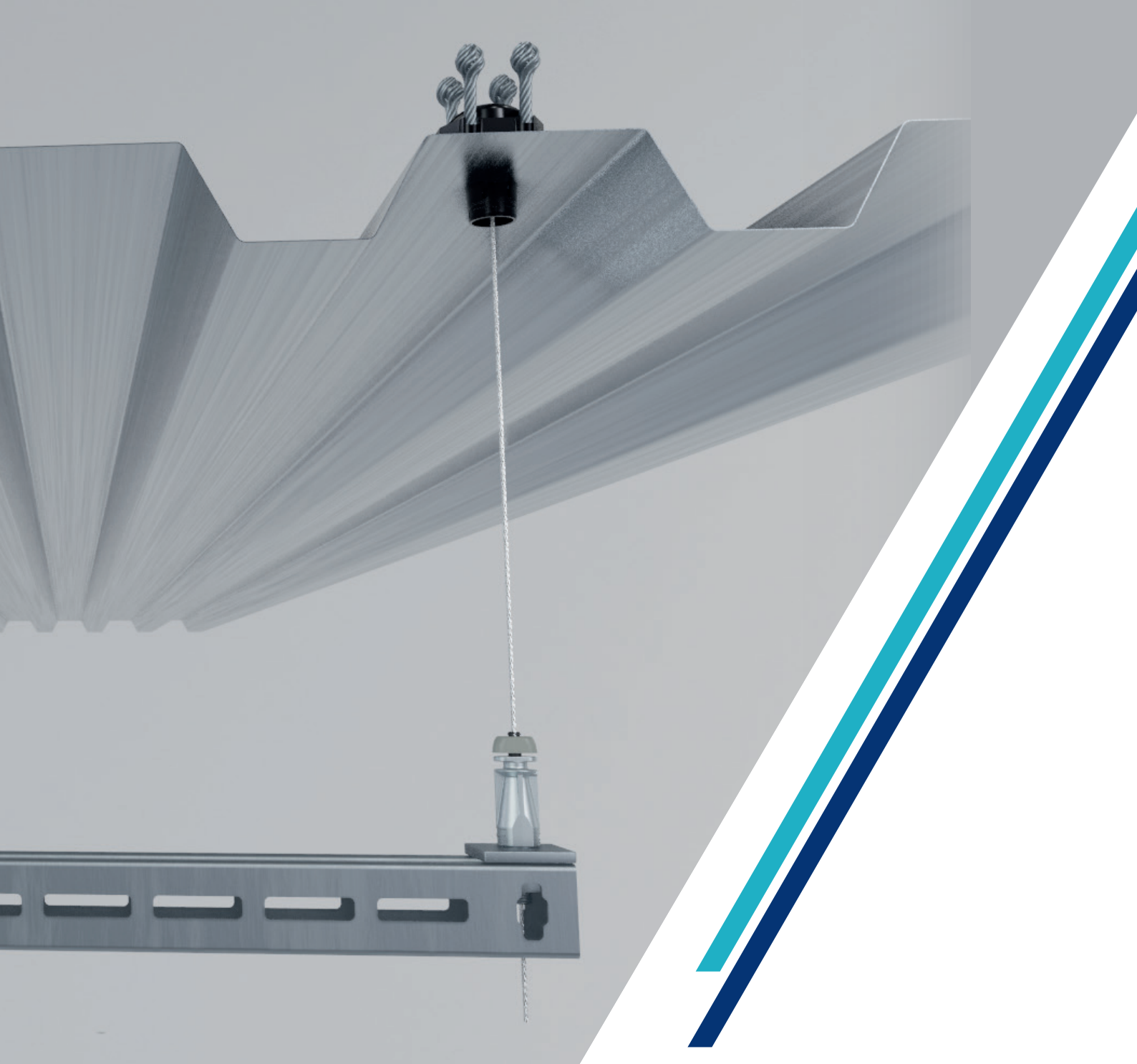
With Gripple, one purchase can cover your entire project with ease and simplicity.

Our concrete inserts provide a dependable and high-performance solution for suspending MEP services in concrete structures. With our patented push-in toggle technology, you can use a single insert with either cable or rod, offering maximum flexibility on site. Our range of hangers enable you to suspend MEP services with ease.

Whatever the suspension, Gripple provides the solution.

All of our concrete inserts are made in the USA.

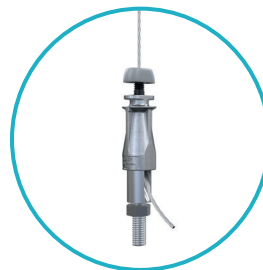




**Spider**



**Cable Push-in Toggles**



**Hanger (UniGrip 2)**



**Universal Bracket**

**Gripple offers various solutions to help you change the game.**



# Which Anchoring Solution is right for you?

Our Rod and Cable Push-in Toggles, as well as our end fixings, are suitable for both wood and metal inserts.

## Spider Cast-in Place Concrete Insert

One insert does it all – the Spider is compatible with all sizes of rod and cable to support every service type, meaning you can decide after the concrete has been poured, helping you stay ahead of the game.



**Spider Metal Deck Insert**  
Page 12



**Spider Wood Form Insert**  
Page 12

**Using  
Cable?**

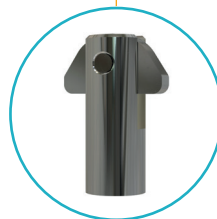


**Cable  
Push-in Toggles**  
Page 14

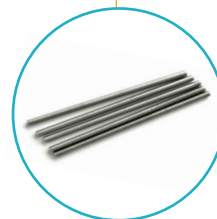


**Gripple Hanger**

**Using  
Threaded Rod?**

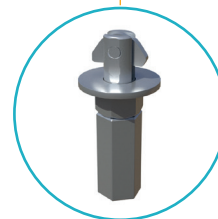


**Rod  
Push-in Toggles**  
Page 14

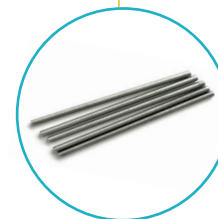


**Threaded Rod**  
3/8", 1/2", 5/8" & 3/4"

**Using in  
Seismic Locations?**



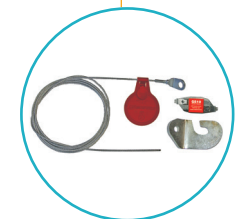
**Seismic  
Push-in Toggle**  
Page 15



**Threaded Rod**  
3/8", 1/2", 5/8" & 3/4"



**Seismic Bracing  
Push-in Toggle**  
Page 15



**GS Kits**

## Threaded Concrete Insert

A cost-effective solution if you know which size of rod you will be using before the concrete has been poured, as it is pre-designed to be compatible with sizes of 1/2" or 3/8". A stud end fixing can be used for cable usage.



**TCI Metal Deck**  
Page 10

**TCI Wood Form**  
Page 10

**Using  
Cable?**

**Using  
Threaded Rod?**



**Stud End Fixing**  
Page 15

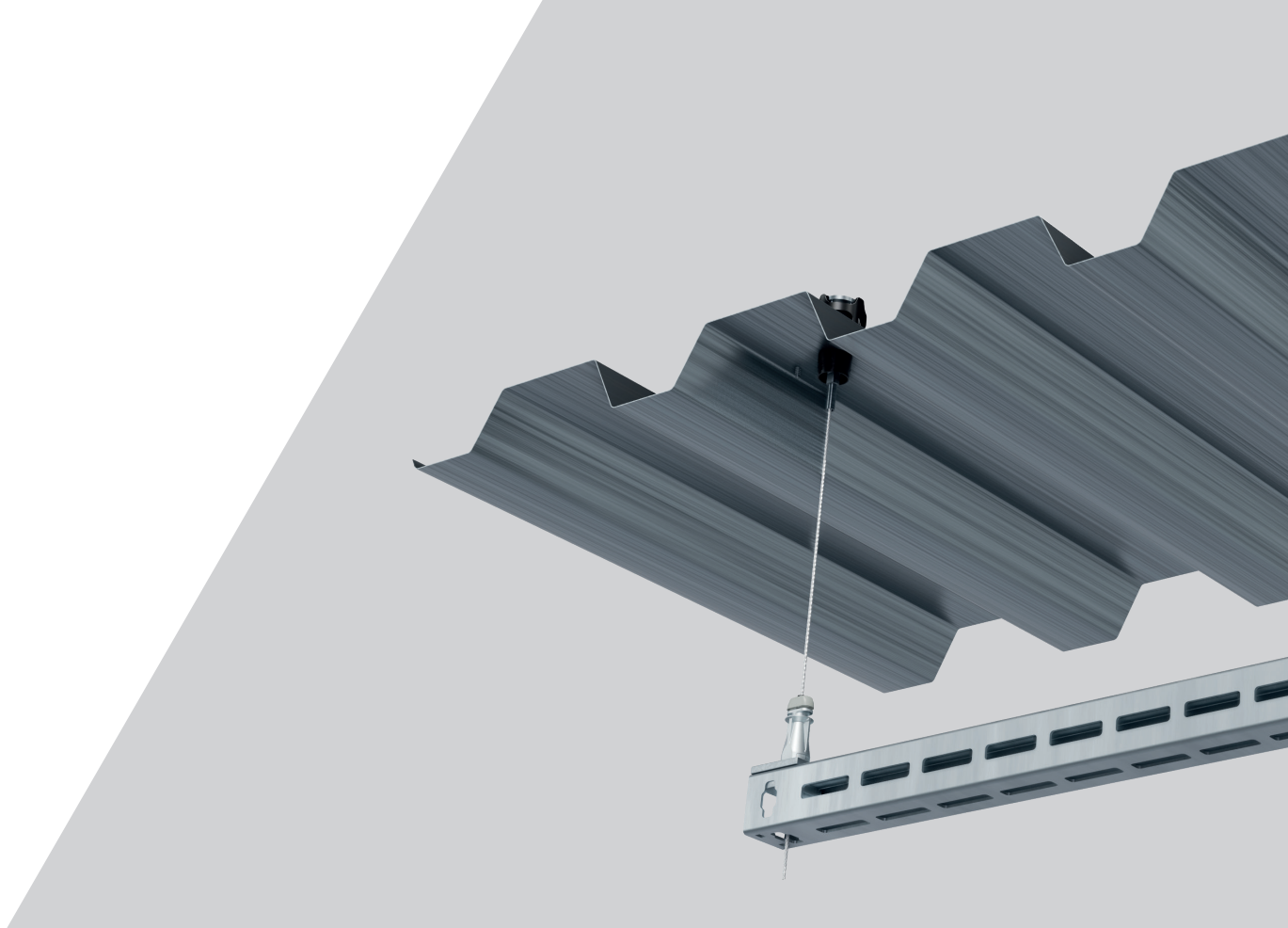


**Threaded Rod**  
3/8" or 1/2"



**Gripple Hanger**





## TCI Range Overview

The Threaded Concrete Insert (TCI) is a cast-in place concrete insert that accommodates for both wood and metal deck installation. The TCI works best with threaded rod in sizes 3/8" and 1/2", but can also work with cable via our stud end fixing, to support loads of up to 1350lbs.

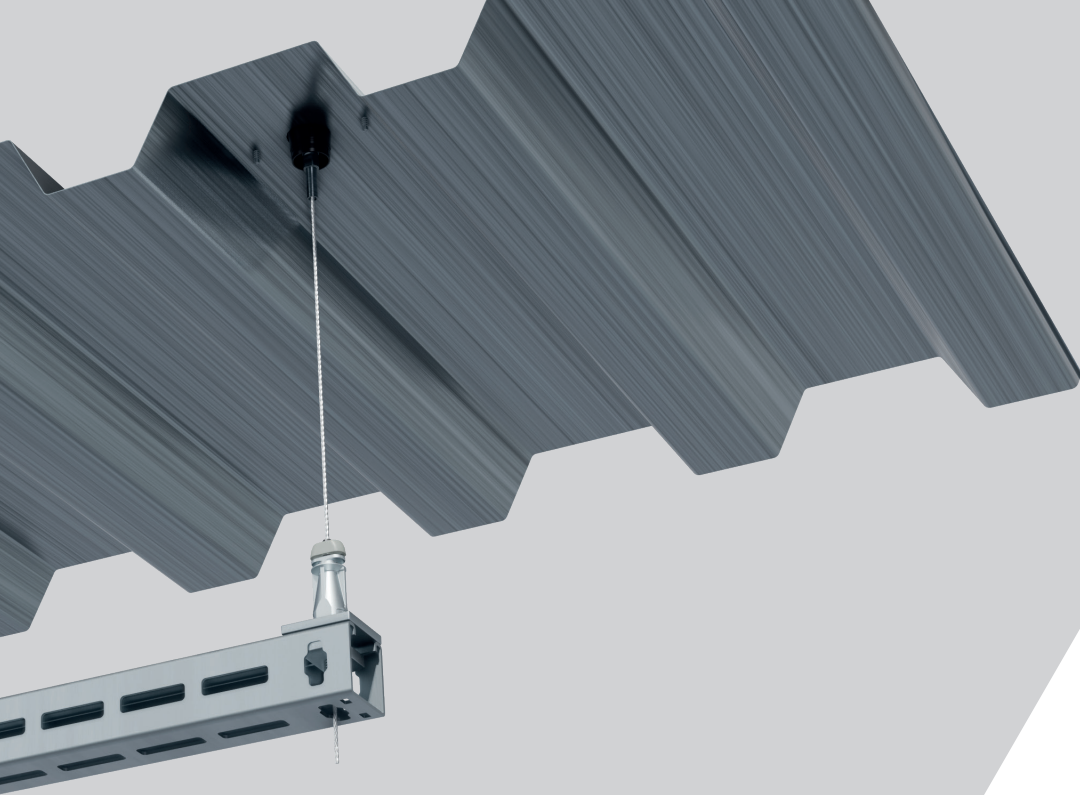
Our game-changing solutions keep installations simple, whilst allowing for the specification and stocking of one insert for a project with limited requirements.



**TCI Metal Deck**



**TCI Wood Form**



## TCI (Metal Deck/Wood Form)

A cast-in-place concrete insert for wood form or metal deck construction, allowing for fast and easy suspension of all building services.



### Versatile

Designed to be used with metal deck and wood form structural deck profiles



### Durable

Its low-profile design prevents it being kicked, knocked over, or damaged before the concrete pour



### Industry Approved

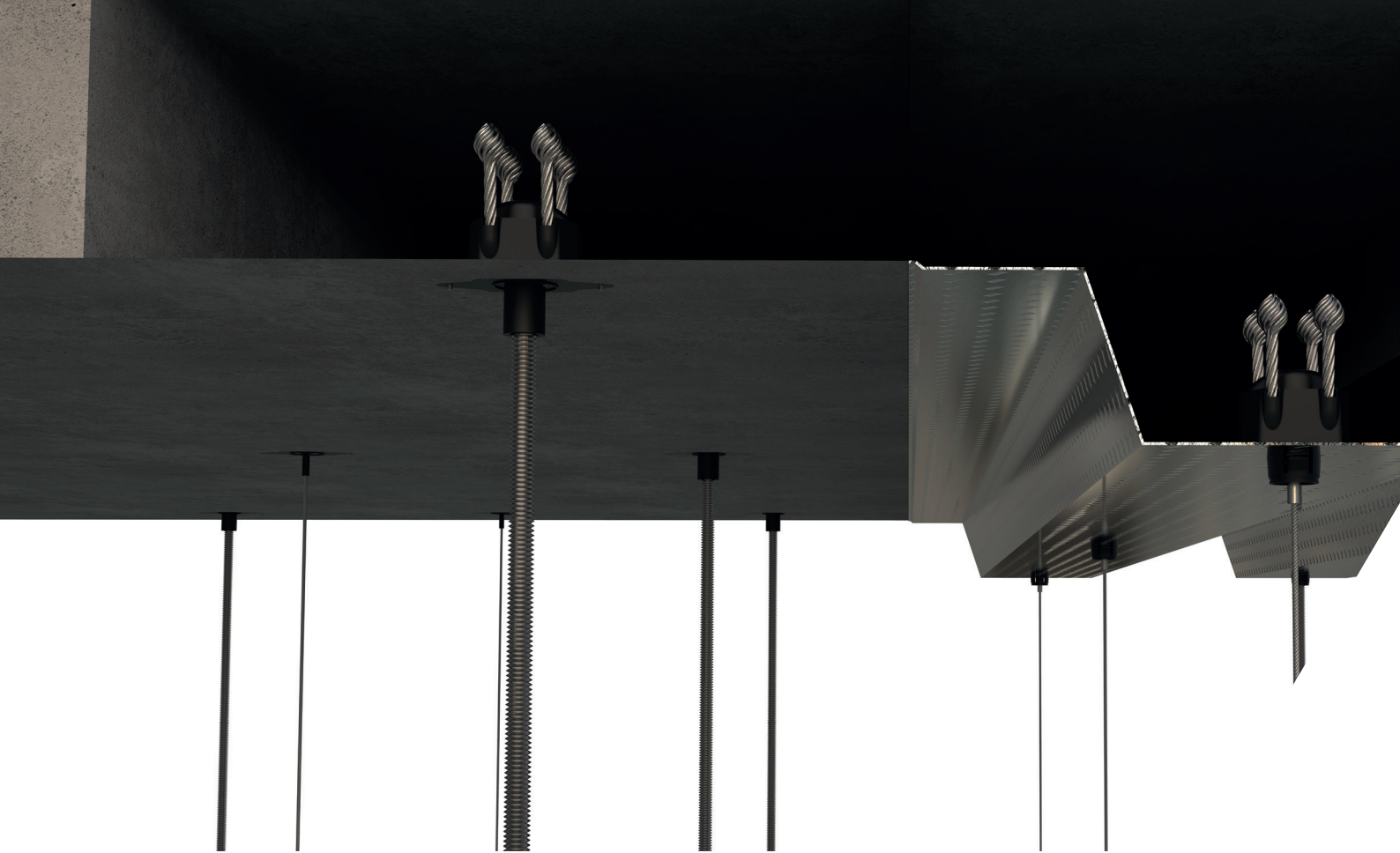
ICC, LARR & UL tested and approved\*



### Strong

Up to 1350lbs safe working load



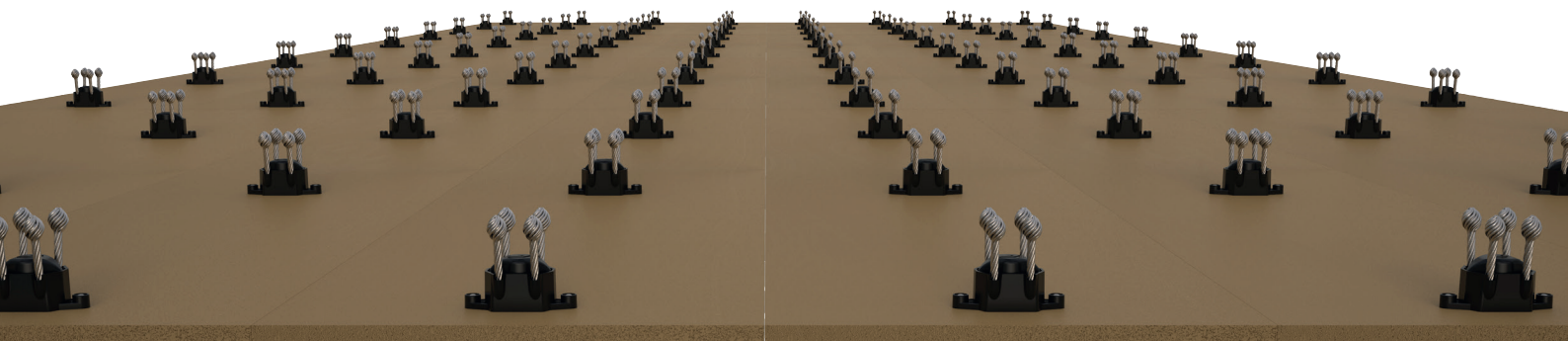


## Spider® Range Overview

### Spider

Gripple Spider is ONE, versatile, cast-in place concrete insert that works best with the No.2-No.5/6 Spider Cable Push-in Toggles, as well as rod sizes from 3/8" to 3/4", to support loads of up to 3000lbs.

Gripple provides ONE game-changing package to revolutionise installation with flexibility on size, suspension type, and weight loading.





## Spider (Metal Deck/Wood Form)

Universal, versatile, cast-in-place concrete insert for wood form or metal deck construction, allowing for fast and easy suspension of all building services.



### Universal

One insert for all cable hangers and threaded rod sizes allowing for the fast installation of building services



### Versatile

Designed to be used with metal deck and wood form structural deck profiles



### Durable

Its low-profile design prevents it being kicked, knocked over, or damaged before the concrete pour



### Seismically Rated

Engineered for seismic applications with bracing and rigid suspension capabilities



### Industry Approved

ICC, LARR, and UL tested and approved\*



### Strong

Working load of up to 3000 lbs

Spider is also available in low-profile versions:



Spider Metal Deck  
Low Profile



Spider Wood Form  
Low Profile

Contact [info@gripple.com](mailto:info@gripple.com) to learn more about this game-changing solution



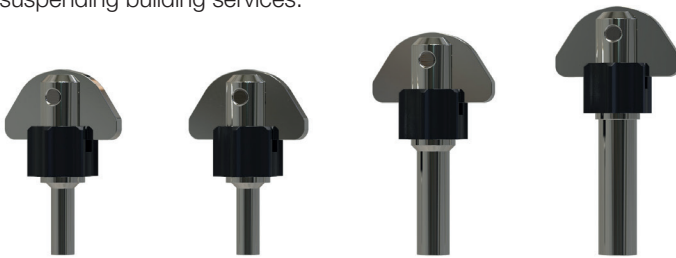
## Attachments

### Spider Cable Push-in Toggles

Connects directly to our Spider metal deck and wood form concrete inserts for fast below deck install, thanks to our push-in toggle technology. Available in multiple cable sizes that are compatible with our range of cable hangers, to provide a complete solution for suspending building services.

Available sizes and Load Ratings\*:

- + **No.2 - Push-in Toggles - 120lbs**
- + **No.3 - Push-in Toggles - 240lbs**
- + **No.4 - Push-in Toggles - 550lbs**
- + **No.5/No.6 - Push-in Toggles - up to 800 lbs**



*\*Up to 3000lbs depending on the structure type and rod adapter size, see technical documentation for full details*

## Looking for a Hanger?

Our Push-in Toggle technology works best with our wide range of hangers, designed to suit your application.

Scan me to  
find out more



### Spider Rod Push-In Toggles

Connects directly to our Spider metal deck and wood form concrete inserts for fast below deck installation. Push-in toggles are available in multiple rod sizes, allowing decisions to be made after the concrete is poured.

Available sizes and Load Ratings\*:

- + **3/8" Push-In Toggles**
- + **1/2" Push-In Toggles**
- + **5/8" Push-In Toggles**
- + **3/4" Push-In Toggles**



*\*Up to 3000lbs depending on the structure type and rod adapter size, see technical documentation for full details*

## Searching for a Seismic Solution?

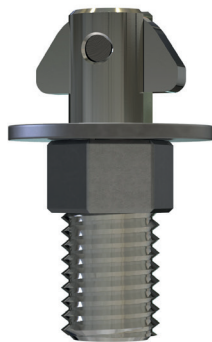
Our seismically rated push-in toggles are ICC and UL approved. We also have a range of specifically designed and engineered Seismic Bracing Kits to secure and suspend non-structural equipment.

Scan me to  
find out more



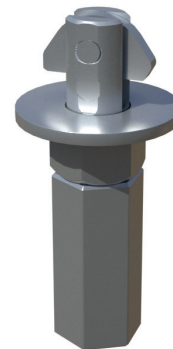
### Spider Seismic Bracing Push-in Toggle

An adapter for cable which connects directly to the Spider concrete insert, creating a seismic bracing point for bracing and securing suspended MEP services.



### Spider Seismic Push-In Toggle

Connecting to our spider concrete insert, this adapter creates a seismic vertical rod suspension attachment for suspending MEP services.



### Stud End Fixing

Connects to our Threaded Concrete Insert (TCI) when using cable. Available in cable size No. 1 - No. 4.





## Accessories

### Wood

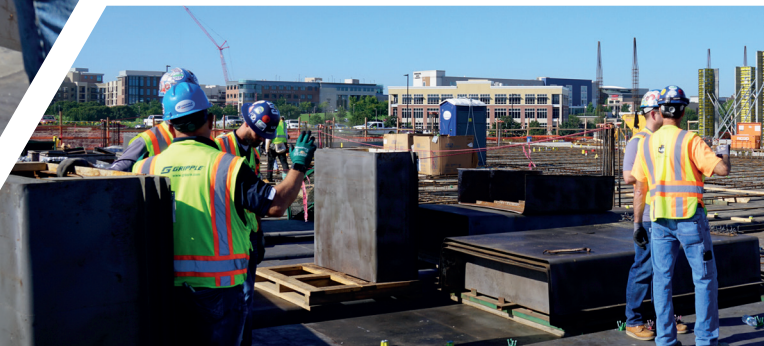
#### Wood Form Installation Tool

A time saving tool that provides the ability to grip, position, and secure the Spider concrete inserts.



#### Wood Form Installation Chuck

A time saving handheld installation chuck for the Spider variant.



## Metal

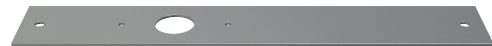
### Extension Tube

For use with Spider and the Threaded Concrete Insert (metal deck), increasing the length of the insert tube and preventing ingress from fire protection sprays. Available in various colours for coding purposes.



### Span Bracket

Allows Spider and the Threaded Concrete Insert (metal deck) to be installed on the side of the flute in applications.



### Stepped Drill Bit

Helps create clean, burr-free holes, making it ideal for drilling into metal deck.



### Drill Chuck Extender

A time saving tool that prevents you from bending over whilst drilling holes in the metal deck.



**Interested in building your perfect bundle?**  
Find out more by contacting our team at  
**[info@gripple.com](mailto:info@gripple.com)**





## Gripple Concrete Inserts – Features and Benefits



### Improved Logistics

Allows you to hold stock of one SKU per deck type and services can be suspended with Gripple cable hangers (Spider only) or threaded rod. We recommend using the Gripple cable hangers, as they are much lighter-weight and easier to move.



### Quicker Installation

The TCI ensures that the suspension of services using a traditional threaded rod insert is made as efficient as possible. While Spider does provide the option of suspending services with threaded rod, the ready-to-use Spider Cable Push-in Toggles means no tools or cutting is necessary, and the faster installation allows for faster project completion.



### Added Security

The low-profile nature of the product reduces the likelihood of the insert being displaced once installed. Once an adapter is inserted, it is virtually impossible to remove, giving contractors peace of mind.



### Technical services

The Gripple Technical Team provide suspension solutions as complimentary 2D CAD and 3D BIM models, ensuring that with little effort, your full project can be prepared for bidding.

To learn more, contact  
**[technicalservices@gripple.com](mailto:technicalservices@gripple.com)**









# GRIPPLE IN ACTION







Scan me to  
find out more



“We needed versatility with this job, and the product provides that with all the different attachments that you can utilise. The technology on the toggle attachments for rod and cable, along with the use of the Unigrip and Clevis Hangers, make the process easy.”

**Ryan Eder,**  
Plumbing Superintendent,  
US Engineering







## Technical Support

### Project Installation & Design Support

Here at Gripple, we pride ourselves on more than just game changing products; our dedicated team of experts are on hand to deliver highly customised technical support from initial concept to final delivery.

We can provide comprehensive services including project design drawings, engineering calculations, and product modeling to help you achieve optimal results.

To maximise project efficiencies, involve our team as early as possible. During the proposal phase, we can provide multiple options for consideration, enabling you to maximize savings on both labour and materials by selecting the most efficient solution.

#### Engineering Calculations

Comprehensive structural and capacity calculations to support project requirements and product integration.

#### Design Drawings

Developing detailed structural and site design drawings to support your specific project requirements, ensuring procurement efficiencies, best practice design layout and installation arrangements.

#### 3D Library

We can provide a comprehensive library of 2D and 3D product CAD resources.

#### 1-1 Project Engineering Support

Our Gripple technical team will be on hand at every stage of your project to provide one on one engineering support and advice.



## On-Site Support

Our dedicated technical team are on hand to provide personalised on-site support from inception to completion of your project.

We can provide a range of on-site support services including installation training, product performance tests, and thorough site condition inspections, ensuring optimal performance and efficiency for your projects.

### Installation Training & Support

Are you or your team new to our systems? The good news is they are designed for safe, simple, and easy installation. However, if you still need support, our dedicated technical team are available to provide on-site training and best practice guidance as and when needed.

### Site Inspection and Planning

Our technical team are available to attend site at every stage of your project if needed, helping to aid product selection and provide best practice, guidance, and support.



**Gripple Ltd (Headquarters)**

The Old West Gun Works  
Saville Street East  
Sheffield S4 7UQ  
UK

**T** +44 (0) 800 018 4265  
**E** info@gripple.com

**Gripple Europe SARL**

1 Rue de Commerce  
BP 37  
67211 Obernai Cedex  
France

**T** +33 (0)3 88 95 44 95  
**E** frinfo@gripple.com

**Gripple Inc**

1611 Emily Lane  
Aurora  
IL 60502  
USA

**T** +1 866 474 7753  
**E** usinfo@gripple.com

**Gripple India**

C-115 Industrial Area  
Phase 1, Naraina  
New Delhi - 110028  
India

**T** +91 11-40582703  
**E** ininfo@gripple.com

**Gripple Canada Inc**

6665 Tomken Road  
Units 9 -10  
Mississauga  
ON L5T 2C4

**T** +1 905 458 8700  
**E** cainfo@gripple.com

**Gripple Japan K.K**

2-57 Tsukizi-cho  
Hyogo-ku, Kobe-shi  
Hyogo, 652-0845  
Japan

**T** +44 (0) 800 018 4265  
**E** info@gripple.com

**[gripple.com](http://gripple.com)**

