

Angel ZT

For the suspension of Zumtobel
TECTON Track Lighting

Designed specifically for fast and secure suspension of Zumtobel Tecton track lighting. Snap on design using sprung stainless steel allows for fast installation and high strength.

- **Convenient** - Supplied as a ready to use kit with wire rope and end-fixing of choice
- **Simple** - Clip snaps into position and is removable with a flat head screwdriver
- **Adjustable** - Adjust the suspension height by squeezing the angel wings
- **Strong** - 15Kg Safe Working Load, with 5:1 factor of safety
- **Safe** - Fused wire ends with no loose / sharp cable strands



Product Specification

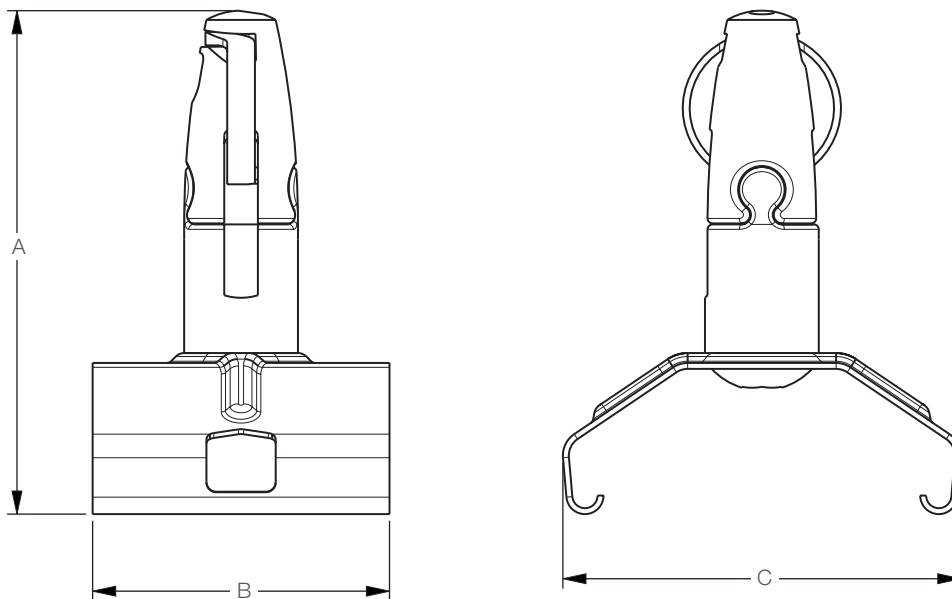
Material

- Angel Housing - ZL2 Zinc Alloy
- Angel Wings - Acetal (POM)
- Roller - Brass
- Track Clip - 301 Stainless Steel
- Mounting Screw - Mild Steel (Zinc Plated)
- Safe Working Load 33 lbs / 15 kg
- Safety Factor 5:1

Compatibility


- Compatible with Gripple Supplied wire ropes (Galvanised Class B, 1.5mm diameter, 1960 Mpa)
- Compatible with Zumtobel Tecton® Lighting Track
- Ensure suspension wire is +/- 15° to vertical
- Ensure minimum 75mm tail wire through the hanger


Design & Dimensions

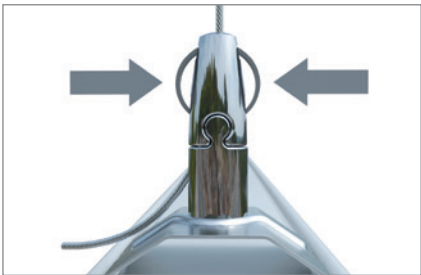


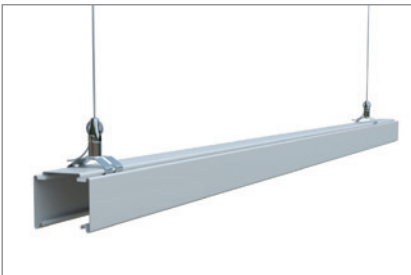
	in	mm
A	2.00	51
B	1.18	30
C	1.58	40

Installation

- 

Snap the clips into position on the track.
- 

Lift the track into position and insert suspension wires.
- 

Squeeze Angel wings to adjust hanger height and level the track. Ensure a minimum tail wire length of 75mm.
- 

Repeat as necessary on multiple track sections.

Key Recommendations

Failure to comply with these recommendations may result in product malfunction and possible damage to property or person and will invalidate the GripplE guarantee. GripplE products are guaranteed to be free from defects in materials and workmanship in accordance with our terms and conditions. No other warranty, whether express or implied, including any warranty of merchantability or fitness for purpose shall exist in connection with the sale or use of any GripplE product.

Full technical information and installation instructions should be obtained directly from GripplE Limited, GripplE Europe, GripplE Inc., GripplE Japan, GripplE Poland, GripplE India, GripplE Germany, any regional GripplE office, or via our website www.gripplE.com.



ENVIRONMENT

Do not use in chlorinated or chemically corrosive atmospheres. Standard hangers are for use in dry and air conditioned environments only. Stainless steel hangers should be considered for high to saturated humid environments after validation by a competent person.



IMPACT

If there is potential for impact on the wire rope suspension or suspended services, seek advice from GripplE Ltd. Technical Services prior to installation.



INSTALLATION

Do not walk or stand on the GripplE product installation. GripplE products must not be used for personal suspension, fall protection or harnessing people.



LIFTING

Do not use for lifting, either by crane or as part of a pulley system.



LOADS

Always operate the product within its stated safe working load range. Suspend static loads only. Do not subject to shock loading. Do not adjust under load.



LUBRICATION

Do not apply oil or any other lubricant to the hanger or any other part of the assembly.



PAINTING

Do not paint the hanger prior to installation. Ensure the hanger is in its final position prior to applying any paint to the wire rope assembly. Do not move the fastener after painting.



REPAIR, MODIFICATION AND RE-USE

Do not repair, modify or re-use GripplE products. If you have any queries regarding product performance, please contact TechnicalServices@gripplE.com



STORING

Do not store the product outdoors, or in damp or abnormal conditions.



SWIMMING POOLS

Not suitable for swimming pools.



TRACEABILITY

Always use the GripplE hanger with the specified wire rope supplied by GripplE. GripplE products should only be used with products supplied by GripplE Ltd., and the warranty will not apply if our products are used with any products supplied by third parties.



WIRE ROPE

Trim any damaged filaments with the wire cutter before use.