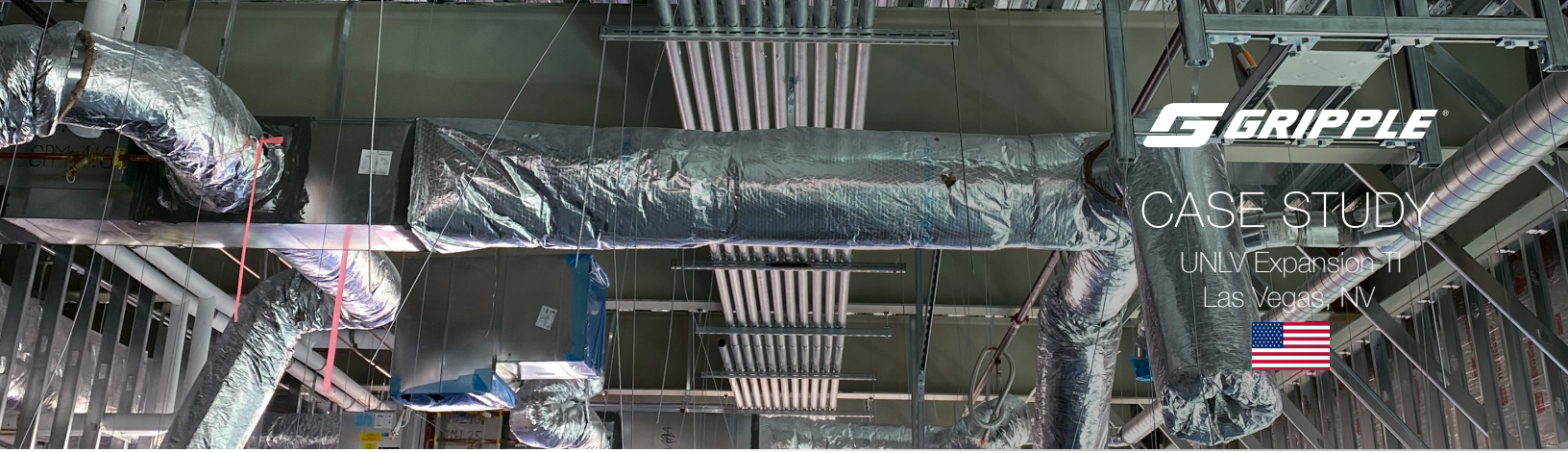


CASE STUDY

UNLV Expansion II
Las Vegas, NV

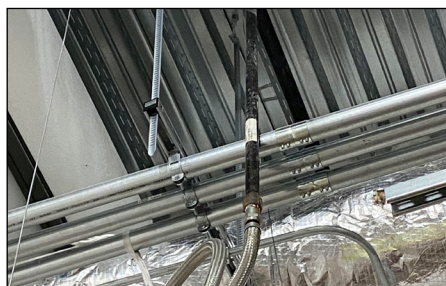
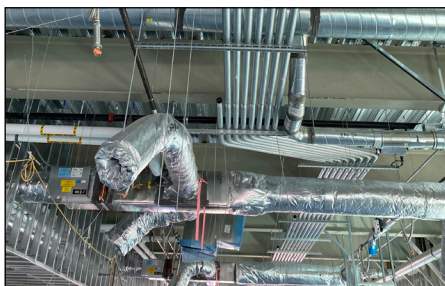


TIME SAVINGS
9 days

COST SAVINGS
\$13,000

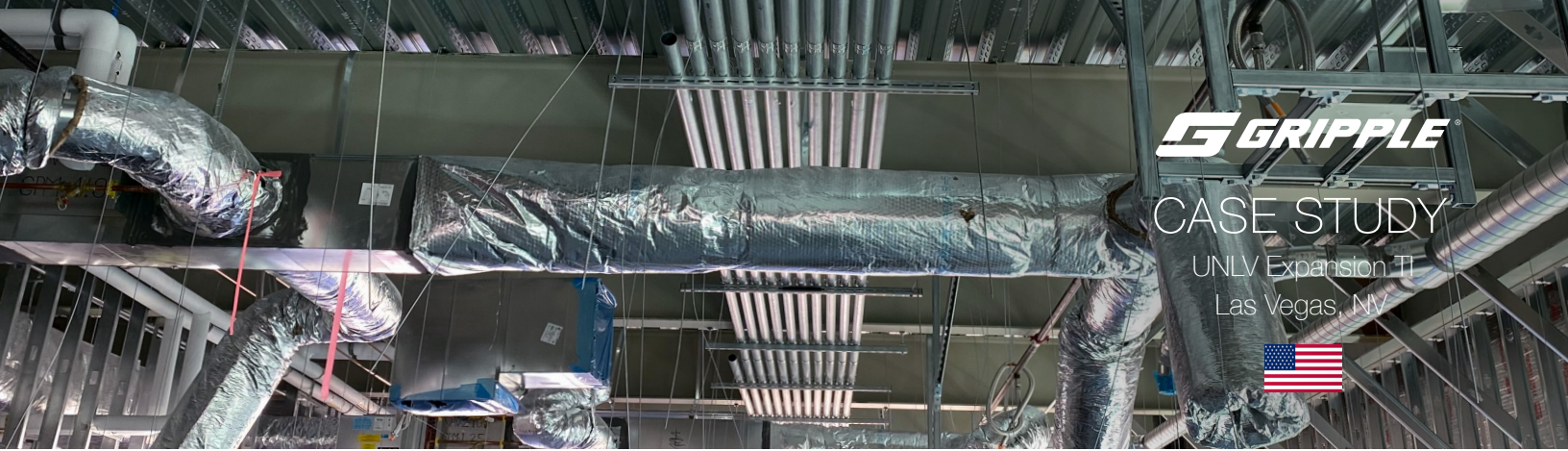
The electrical contractor, Conti Electric, utilized Fast Trak to suspend conduit on the UNLV Expansion.

Project Summary	
Project type	Conduit
Contractor	Conti Electric
Building structure	TI Expansion
Services	Electric



..... COST SAVING SUMMARY

	Gripple solution	Traditional method
Overview	Fast Trak	Traditional rack / trapeze
Material cost	\$3,400	\$3,800
Installation time	3 days with one foreman	12 days with 2 foremans
Labor rate (per hour)	\$75/hour	\$75/hour
Total labor cost	\$1,800	\$14,400
TOTAL COST	\$5,200	\$18,200



PROJECT DETAILS

The contractor, Conti Electrics, was looking for a solution quick solution to suspend conduit on the University of Nevada, Las Vegas Expansion.

Prior to this job, the contractor had no experience with Gripplle products. They decided to try Fast Trak on one area of the project. They found that not only were the products easy to install but also provided huge time savings.

These results convinced the contractors at Conti Electric to suspend all remaining conduit with Fast Trak.

The Fast Trak system was 6.5x faster than the traditional method, saving the contractor 9 days of in installation time and \$13,000 total savings. The advantages of Fast Trak convinced the Superintendent to use Fast Trak on all future conduit scopes.

