

Manufacturer's Recommendations

LOADS: Always use product within its stated Safe Working Load (SWL). *

LIFTING & MOVEMENT: Do not use for lifting, such as in a crane or pulley situation, or for hanging services exhibiting movement or dynamic behavior. Designed for hanging statically positioned services only.

INSTALLATION: Do not walk or stand on the Gripple product installation.

PAINTING: Do not paint the Gripple fastener. Ensure that the fastener is in its final position prior to applying any paint to the cable assembly. Do not move Gripple fastener after painting.

CABLE & FASTENER : Always use Gripple-supplied cable with Gripple-supplied fasteners. Never use fasteners on coated cable or other cable. Trim any damaged filaments with Gripple wire cutters before use.

ENVIRONMENT: Gripple products, including Stainless Steel, are NOT suitable for use in chlorinated / swimming pool environments. Use standard Gripple hangers in **DRY LOCATIONS ONLY**. Stainless Steel Gripple hangers are **SUITABLE FOR DAMP LOCATIONS**.

LUBRICATION: Do not apply oil or any other lubricant to the Gripple fastener or any other part of the cable assembly.

JOINING: Never join two cable ends together in-line. Only pass the free end of the cable in a continuous loop through both channels of the Gripple fastener. The angle inside the Gripple formed loop must not exceed 60°.

HANGING AT AN ANGLE TO VERTICAL: Ensure that the load calculation considers the effect of 'side load'. For example, at an angle of 60° to vertical, the SWL is reduced by 50%. (See published technical information on website or in Product Guide.)

DUCTING: When installing wraparound hangers on round/spiral ducting or pipes, the final inclusive angle of the assembly should not exceed 60°.

Y-FIT: Legs on Y-Fit hangers are not be installed at angles greater than 60°.

REPAIR, MODIFICATION, AND RE-USE: Do not repair, modify, or re-use Gripple products. If you have any questions regarding product performance, please contact grippleinc@gripple.com

WELDING IN PLACE:

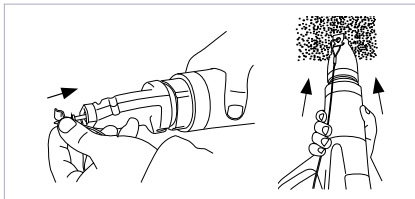
It is not recommended to weld pipe in place while suspended with cable hangers, unless the necessary arrangements are made to prevent the passage of welding current through a cable hanger.

Failure to comply with these recommendations may result in product malfunction and possible damage to property or person and will invalidate the Gripple warranty. Gripple products are warranted to conform to the manufacturer's published specifications at the time of shipment and to be free from defects in materials and workmanship. No other warranty, whether express or implied, including any warranty of merchantability or fitness for purpose, shall exist in connection with the sale or use of any Gripple product.

***Refer to Shotfire manufacturer recommendations for Shotfire Safe Working Loads and Installation Steps, based on your unique installation requirements.**

****NOTE: Any certifications associated with the Fastener Specific installations do not apply to Shotfire installations. This includes UL, ICC, CSA, and any additional certifications that may be listed on those instructions.**

Install Shotfire



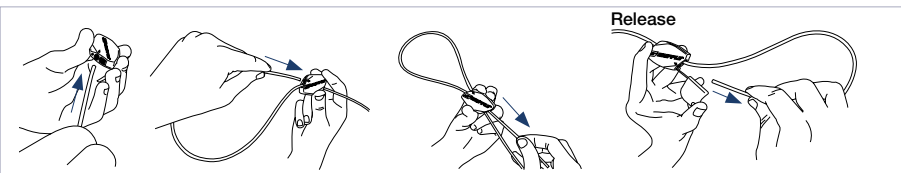
For further technical assistance, please contact:

Gripple Inc. 1611 Emily Lane / Aurora, IL 60502 Phone: 630.406.0600 Email: grippleinc@gripple.com

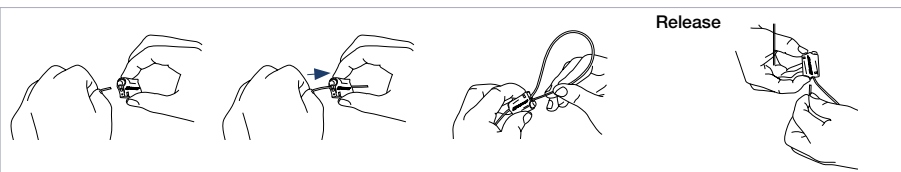
INST-SHOTFIRE-USA
www.gripple.com/us

Installation Variations - Fastener Specific**

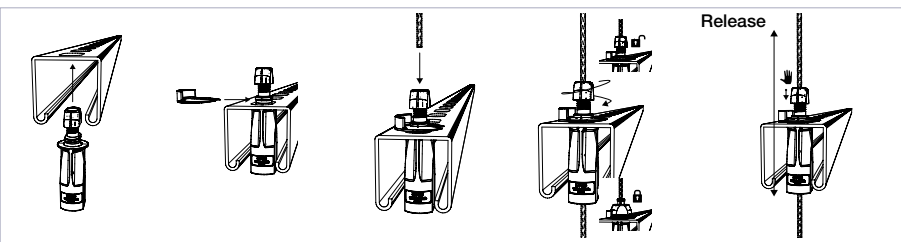
Install Standard Hanger



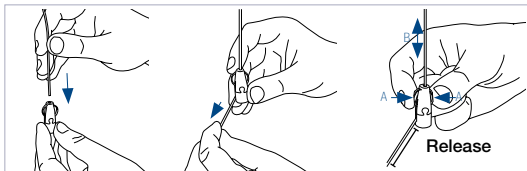
Install Express Hanger



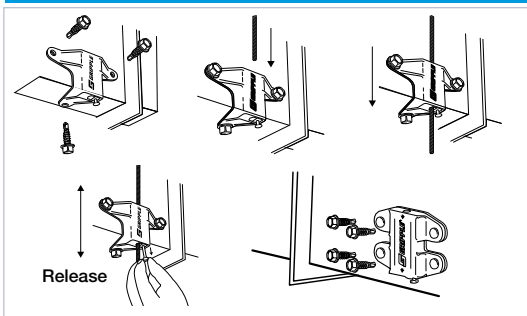
Install UniGrip



Install Angel



Install Duct / Butterfly Trapeze



****NOTE:** Any certifications associated with the Fastener Specific installations do not apply to Shotfire installations. This includes UL, ICC, CSA, and any additional certifications that may be listed on those instructions.

For further technical assistance, please contact:

Gripple Inc. 1611 Emily Lane / Aurora, IL 60502 Phone: 630.406.0600 Email: grippleinc@gripple.com