

# CASE STUDY

1090 WEST PENDER STREET

Vancouver, Canada



## Project Summary

<b>Building Type</b>	High rise office tower
<b>Contractor</b>	Fred Welsh
<b>Structure</b>	Concrete
<b>Building Size</b>	562,000 square-feet
<b>Services</b>	Pipework

## Featured Products



## How It's Supplied

### Fast Trak Packaging



**“We installed a complete floor with two people within two hours. This would have normally taken a full day.”** – Chris Duncan, Foreman, FRED WELSH

## PROJECT DETAILS

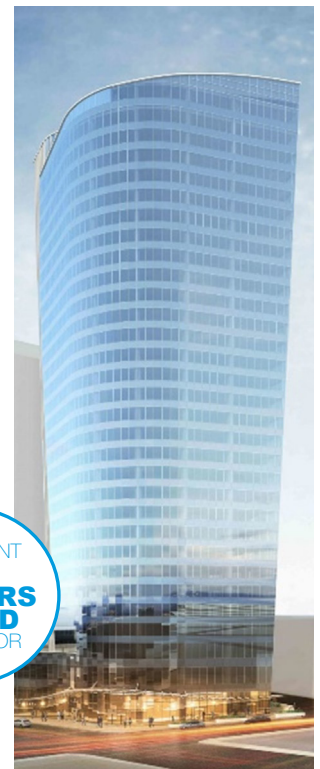
The city of Vancouver is seeing a boom in demand for office buildings, the latest comes from the developer of the notable Bentall Towers, Bentall Kennedy. This project at 1090 Pender street has over 562,000 sq. ft. of floor space making it one of the most significant additions to the city

FRED WELSH, the Contractors on this project wanted to speed up their installation and cut down on labour costs. To achieve this PM Shane Quon and Foreman Chris Duncan decided to utilize Gripple's Fast Trak system. The system reduces time at height and due to the slide and lock mechanism on the tracks, installation was complete in minutes.

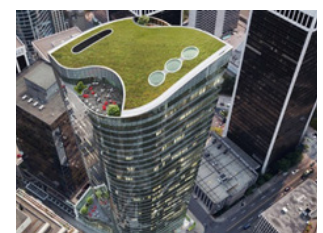
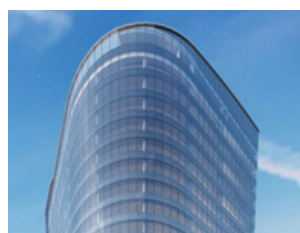
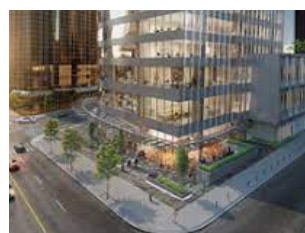
The team managed a time saving of 75% per floor for the installation. The team also saved hours on measuring and cutting lengths of rods. Gripple Fast Trak came in pre-cut lengths and packaged in grouped bundles to make transport on-site easier.

Due to the time and cost savings, FRED WELSH was able to spend more time and redistribute the financial savings to increase the quality of other aspects of the projects.

Checkout the pipework install on the following page.



Artistic Rendering by Musson Cattell Mackey Partnership / Bentall Kennedy



[WWW.GRIPPLE.COM](http://WWW.GRIPPLE.COM)





## CASE STUDY

1090 WEST PENDER STREET

Vancouver, Canada



### INSTALL IMAGES



[WWW.GRIPPLE.COM](http://WWW.GRIPPLE.COM)

GripplE Canada Inc. | 6665 Tomken Road | Units 9 - 10 | Mississauga | ON | L5T 2C4 | Tel +1 905 458 8700 | Email [cainfo@gripplE.com](mailto:cainfo@gripplE.com)