

# CASE STUDY

Office Building  
Irvine, CA



**TIME SAVINGS**  
30 hours

**TOTAL SAVINGS**  
\$2,250

The contractor was tasked with installing spiral duct and piping in an office building in Irvine, CA.

## Project Summary

Building type	Office
Contractor	Southland
Building structure	Concrete
Services	Mechanical

## Featured Products

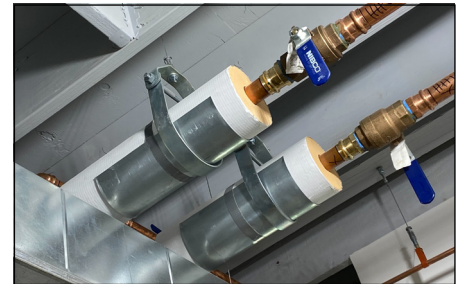
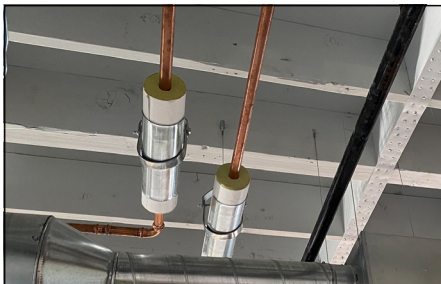
UniGrip



Express Hanger



Duct Trapeze



## COST SAVING SUMMARY

	Grippler solution	Traditional method
Overview	UniGrip Standard & Central Exit / Express Hanger / Duct Trapeze	Threaded Rod & Strut
Material cost	\$4,000	\$3,500
Installation time	40 hours	70 hours
Labor rate (per hour)	\$75/hour	\$75/hour
Total labor cost	\$3,000	\$5,250
<b>TOTAL COST</b>	<b>\$7,000</b>	<b>\$8,750</b>





**GRIPPLE**

## CASE STUDY

Office Building  
Irvine, CA



### PROJECT DETAILS

For this project the mechanical contractor, Southland, was tasked with installing spiral duct and piping in an office in Irvine, California.

The contractors were looking for a solution to make the installation process safer and quicker. Prior to this project they had no previous experience using Gripple products. They found that using Gripple fasteners eliminated the need for

cutting threaded rod and strut and saved them over 30 labor hours. The highlight of the project was the ease of installation that the Gripple products provided versus the traditional method.

*"Gripple is a great system that is easy to use. Clean look and safer than other methods."* - Eric Amburgey



[WWW.GRIPPLE.COM](http://WWW.GRIPPLE.COM)