



**G GRIPPLE**

## CASE STUDY

Dodge City High School  
Dodge City, KS



### Project Summary

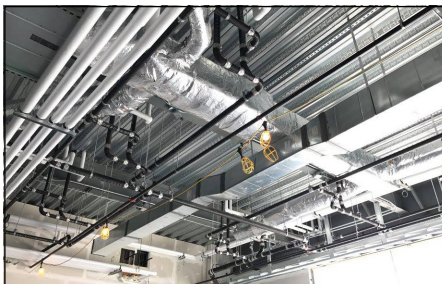
Building type	Education
Contractor	Kruse Corporation
Building structure	Hotel with exposed ceiling
Services	HVAC / PIPING

### Featured Products

Express Hanger



Duct Trapeze



*“With Gripple, some of this plumbing installation became a one-man operation, when it normally took two guys before.”- Corey Hedstrom, Installer*

### PROJECT DETAILS

The contractor, Kruse Corporation, had some previous experience on another project with Gripple suspension products, so didn't hesitate to try some newer Gripple products on this job.

According to the Field Superintendent for Kruse Corporation, “We would absolutely use Gripple again. It sure sped things up.

We really liked the way it looked on our Hydronic lines (4 pipes).” Previously the services would have been installed with

threaded rod products in conjunction with Unistrut and various piping clamps. The benefits of using Gripple products on this job were apparent to everyone on board. From a labor savings standpoint, the contractor has been able to complete some of the plumbing with one laborer instead of two, allowing them to focus more hours on time-sensitive portions of the job. Kruse Corporation estimated approximately 25% labor savings, with the possibility of massive labor savings down the road.

[WWW.GRIPPLE.COM](http://WWW.GRIPPLE.COM)