

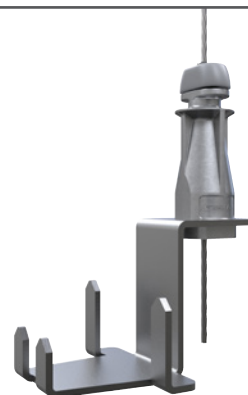
# UniGrip - Phenolic Adapter



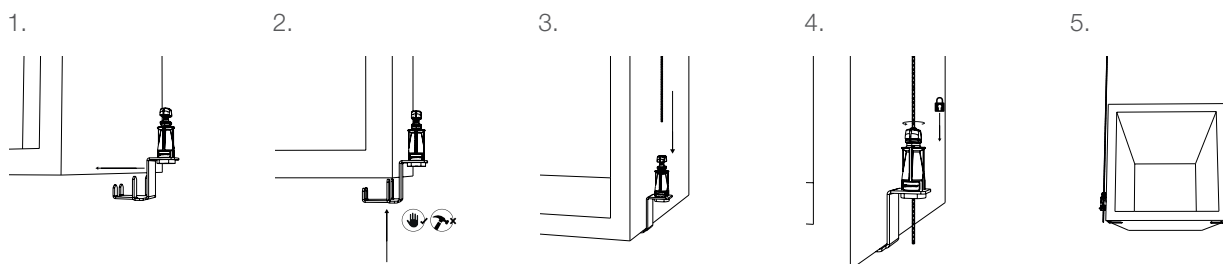
The next generation of cable suspension products designed for the fast suspension of electrical conduits & tray, pipework, ductwork and HVAC systems, including multi-tier installations.

## FEATURES / BENEFITS

- **Quick** – up to 6 times faster than traditional suspension systems
- **Safe** – push-fit directly into the underside of the duct
- **Fast** – tool free insertion with less time at height
- **Easy** – integral ergonomically designed release button allows for simple adjustment Ideal for Phenolic & PIR fabricated ductwork
- **Secure** – button acts as a locking screw and indicator clearly highlights the cable is locked in position for ultimate security
- **Strong** – 33 lb / 15 kg per bracket with 5:1 SWL (always dependant on base material)

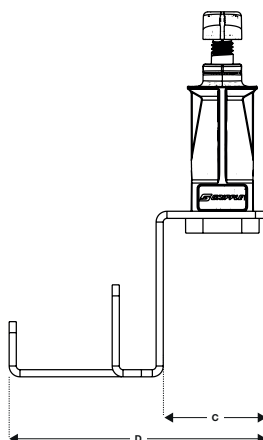
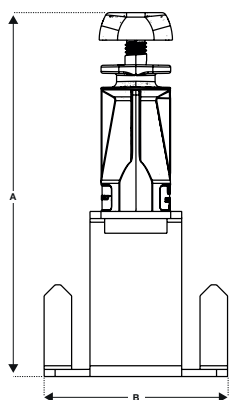


## INSTALLATION & ADJUSTMENT



Maximum off axis suspension = 15° (Unless otherwise specified by Grippler Technical Services). Use foil tape  
The safe working load is calculated based on the cable exiting on axis. For off-axis please contact Grippler Canada Technical Services.

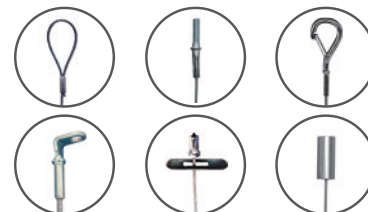
## SPECIFICATION



No. 2	Dimension	A	B	C	D
	Inches	3 7/8	1 15/16	1 1/8	2 11/16
	mm	98	50	28	68

**Foot** Hex Nut Bolt – Mild Steel (Type EN1A) - Bright Zinc Plated  
Adaptor Bracket – 2 mm / 1/16" galvanized steel

## AVAILABLE END FIXINGS



For more options on available end fixings please contact us or visit [www.grippler.com](http://www.grippler.com)

## SUBMITTAL INFORMATION

**Load Rating:**  
33 lb / 15 kg at 5:1 safety factor SWL always dependant on base material

**Material:**  
Housing - Type ZA2 Zinc  
Carriage - Acetal Copolymer  
Wedge - Sintered steel hardened to min. 56 Rockwell C  
Button - Acetal Copolymer

**Approvals:** CSA & UL 1598 & UL 2239  
NOT suitable for use in chlorinated / swimming pool environments.