

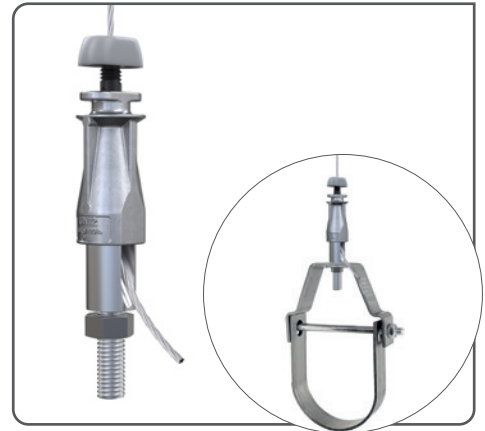
# UniGrip - Side Exit



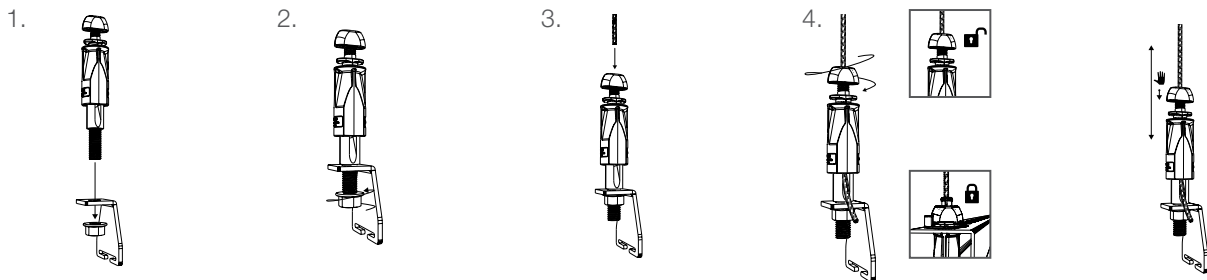
The next generation of cable suspension products designed for the fast suspension of electrical conduits & tray, pipework, ductwork and HVAC systems, including multi-tier installations.

## FEATURES / BENEFITS

- **Quick** – up to 6 times faster than traditional suspension systems
- **Versatile** – designed for applications in which cable cannot exit centrally (avoiding clashes with services). Supplied with a hex nut. Side cable exit
- **Easy** – integral ergonomically designed release button allows for simple adjustment, ideal for use with the Clevis Hanger
- **Secure** – button acts as a locking screw and indicator clearly highlights the wire is locked in position for ultimate security
- **Strong** – load rating up to 240 lb / 110 kg with 5:1 SWL



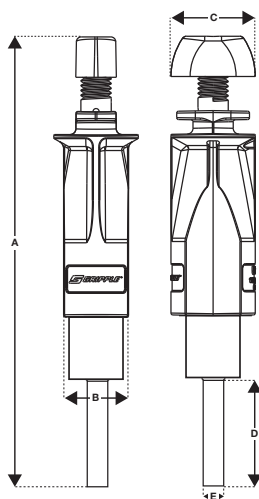
## INSTALLATION & ADJUSTMENT



Maximum off axis suspension = 15° (Unless otherwise specified by Grippler Technical Services).

The safe working load is calculated based on the cable exiting on axis. For off-axis please contact Grippler Canada Technical Services.

## SPECIFICATION



No. 2	Dimension	A	B	C	D	E
	Inches	3 7/8"	11/16"	13/16"	1"	3/8"
	mm	98	17	20		

No. 3	Dimension	A	B	C	D	E
	Inches	4 9/16"	11/16"	7/8"	1"	3/8"
	mm	116	17	22		

Foot	Thread – Mild Steel (Type EN1A) - Bright Zinc Plated
------	--

Maximum off axis suspension = 15° (Unless otherwise specified by Grippler Technical Services). The safe working load is calculated based on the cable exiting on axis. For off-axis please contact Grippler Canada Technical Services. \*\* Maximum torque value to be applied, No. 2 and No. 3 = 4 lb-ft (5Nm), No. 4 = 18 lb-ft (25Nm)

## AVAILABLE END FIXINGS



For more options on available end fixings please contact us or visit [www.grippler.com](http://www.grippler.com)

## SUBMITTAL INFORMATION

### Load Rating:

No. 2 - 120 lb / 55 kg at 5:1 safety factor  
No. 3 - 240 lb / 110 kg at 5:1 safety factor

### Material:

Housing - Type ZA2 Zinc  
Carriage - Acetal Copolymer  
Wedge - Sintered steel hardened to min. 56 Rockwell C  
Button - Acetal Copolymer

**Approvals:** CSA & UL 1598 & UL 2239  
NOT suitable for use in chlorinated / swimming pool environments.

