

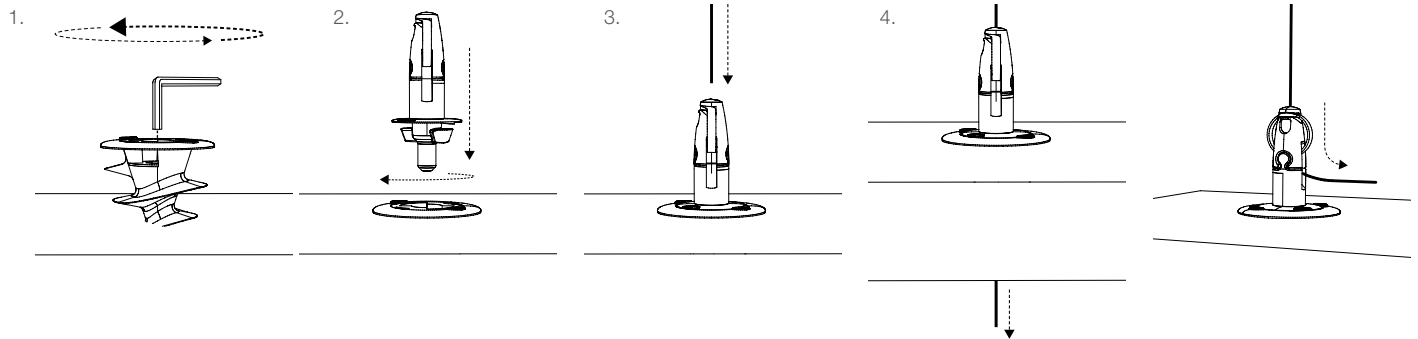
Secure, low profile hanger designed for fast installation and easy adjustment of acoustic panels.

FEATURES / BENEFITS

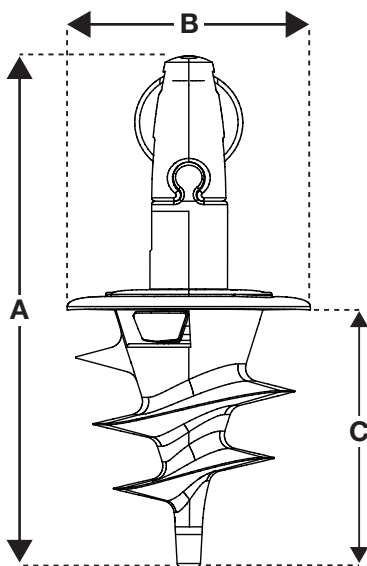
- **Compatible** – Ideal for use with acoustic panels made from fibreglass and dense foam
- **Easy** – Helix screw locks simply into acoustic panels using an Allen key
- **Quick** – Angel connects to Helix with quick twist for faster installation
- **Adaptable** – Easy to adjust using Angel Spring
- **Versatile** – Central exit model allows multiple panel layers
- **Secure** – One click safety feature
- **Convenient** – Can be pre-installed at point of manufacture



INSTALLATION & ADJUSTMENT



SPECIFICATION



Dimension	Size	
	Inches	mm
A	2 5/16"	75
B	1 2/8"	35
C	1 1/2"	38

AVAILABLE END FIXINGS



For more information on available end fixings please contact us or visit www.gripple.com

SUBMITTAL INFORMATION

Safe Working Load:

Max load rating of this product in a vertical suspension = 33 lb / 15 kg
Minimum load ratings will vary due to the type of acoustic panel material being used. Gripple cannot guarantee a SWL due to this factor. If unsure please contact Gripple Technical Services. Minimum recommended panel thickness 1.57" / 40 mm. Suitable for vertical applications only.

Material:

Housing - Zinc Alloy (EN 12844 ZP2)
Roller - Brass (BSEN 12164)
Spring - Acetal (POM)
Plating - Bright Nickel Plating (BS 4758)
Foot - Nylon (Glass fill 30%)