

Con-Vex (Metal Deck)



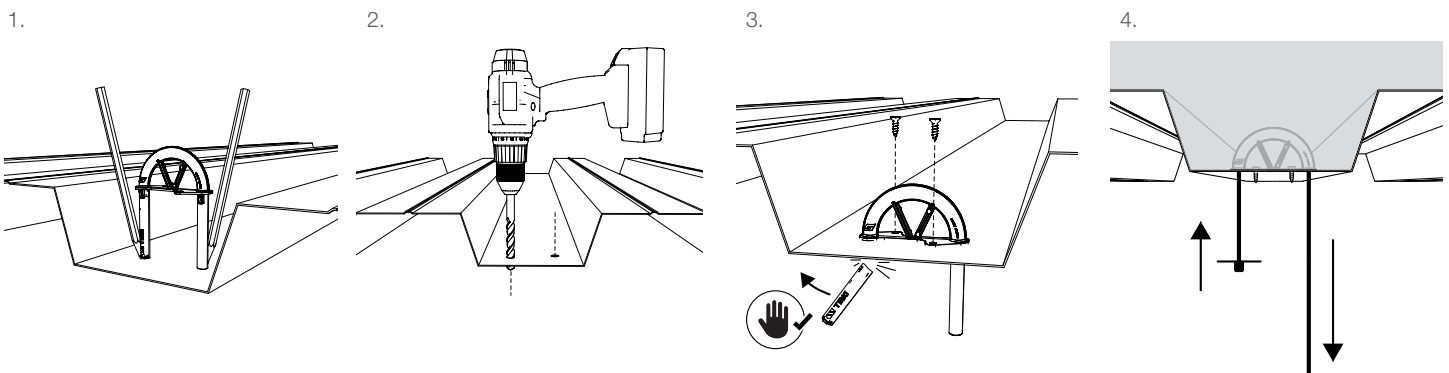
Versatile cast-in-place concrete insert for the fast attachment of Grippler's wire rope suspension kits below the metal deck.

FEATURES / BENEFITS

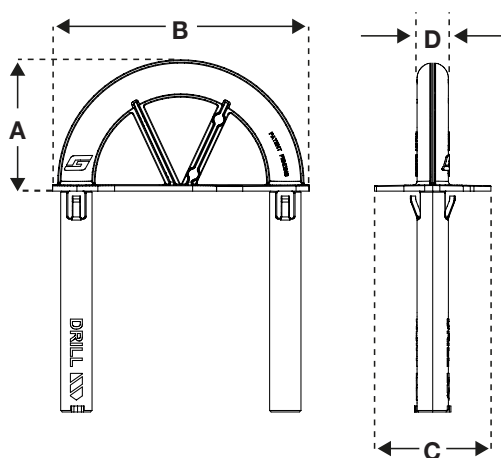
- **Versatile** – Can support as a hanger (up to No. 3 loads) and as a bracing location (GS10-GS12)
- **Robust** – low profile design aids impact protection; insert doesn't displace when kicked or knocked on site
- **Strong** – up to 240 lb / 110 kg safe working load in low strength concrete
- **Secure** – wider footprint spreading the load to give a higher load capacity
- **Longevity** – inert material, ensures a longer design life than products which include metallic components
- **Safe** – integrated snap off tube for fire coat protection
- **Fast** – below deck install saves time due to simple cable attachment with no assembly required



INSTALLATION



SPECIFICATION



Dimension	inches	mm
A	1 3/4	44
B	3 3/8	88
C	1 1/2	39
D	7/16	10

RECOMMENDED END FIXINGS



Loop



Toggle

For more options on available end fixings please contact us or visit www.grippler.com

SUBMITTAL INFORMATION

Material:

Body - ABS

Nail - Q235 steel with Electro galvanized coating

Load Rating:

240 lb / 110 kg with a 4:1 safety factor

SWL always depends on substrate. Load rating of anchor system may differ from that of the Grippler hanger and may govern the system SWL. Contact Grippler Canada Technical Services for more information.

BUS-PI-CVX-CAN-ENG-3955
Published November 2020

www.grippler.com

Grippler's policy is one of continuous development and innovation. We therefore reserve the right to alter specifications, etc. without notice.



Grippler Canada | 6665 Tomken Road | Units 9-10 | Mississauga | ON | L5T 2C4

Tel +1 905-458-8700 Email cainfo@grippler.com