

Designed for suspension and bracing of high load applications and catenary installations.

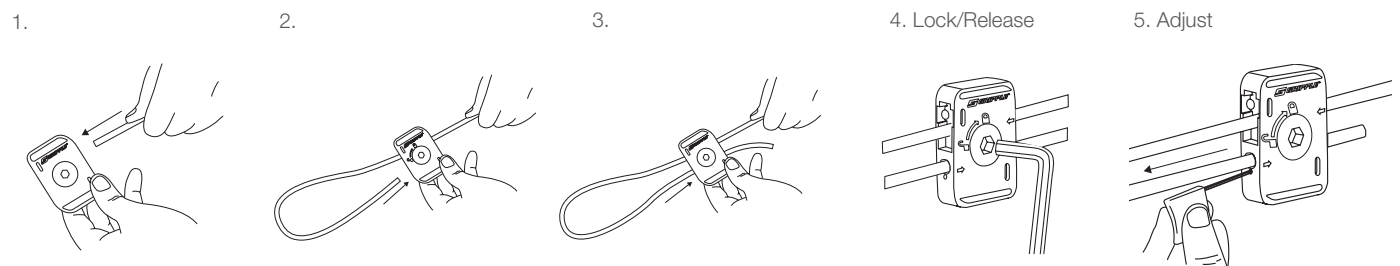
FEATURES / BENEFITS

- Quick and simple installation
- Integral lock secures cable in both channels simultaneously for safety and security
- Designed for high load applications
- No tools or 'hot works' permit required for installation, improving health and safety on-site

Supplied as a ready-to-use hanger kit with length of cable and pre-attached end fixing.

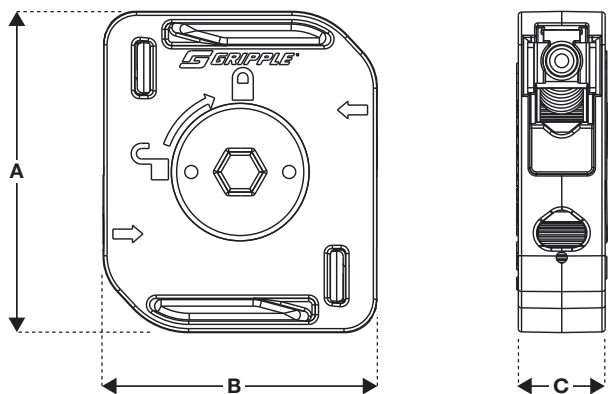


INSTALLATION & ADJUSTMENT



Ensure a minimum 3" / 75 mm of cable exits the hanger.

SPECIFICATION



Dimension	D2		D3		D4		D6	
	Inches	mm	Inches	mm	inches	mm	inches	mm
A	1 5/16	33	1 5/16	33	1 15/16	49	2 7/16	62
B	1 3/16	30	1 3/16	30	1 5/8	42	1 5/8	42
C	7/16	11	7/16	11	9/16	15	9/16	15

AVAILABLE END FIXINGS



For more options on available end fixings please contact us or visit www.gripple.com

SUBMITTAL INFORMATION

Safe Working Load: See reverse

Cable Size:

D2 - 5/64" / 2 mm

D3 - 1/8" / 3 mm

D4 - 3/16" / 4.75 mm

D6 - 1/4" / 6 mm

Material:

Housing - Type ZA2 Zinc

Roller - Ceramic Sintox FA

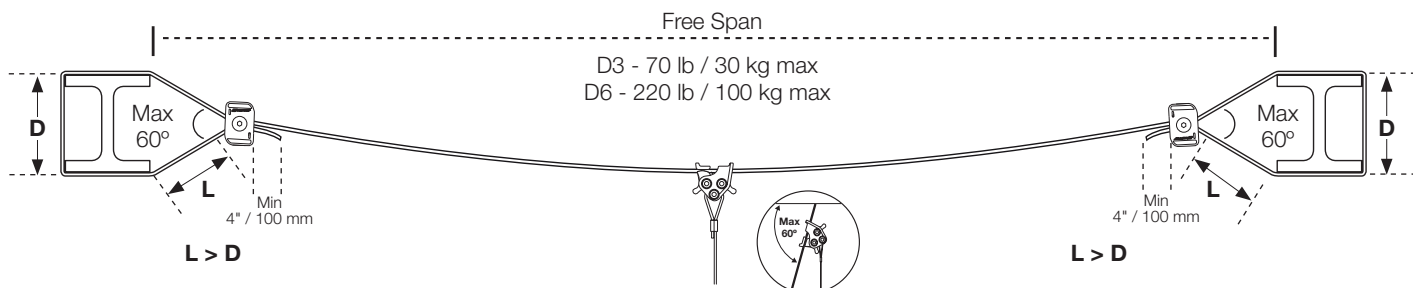
Spring - Stainless Steel (Type 302)

End Cap - UV Stabilized homopolymer propylene

NOT suitable for use in chlorinated / swimming pool environments

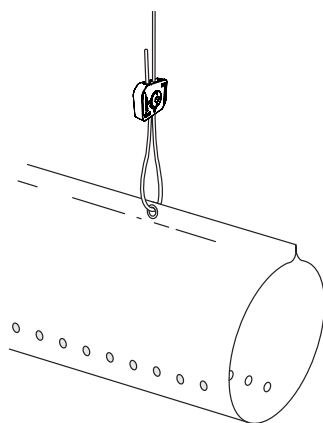
Designed for suspension and bracing of high load applications and catenary installations.

CATENARY



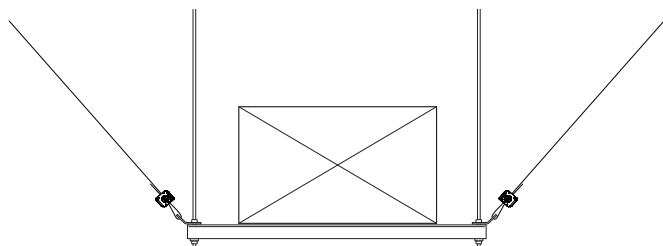
5:1 Safety Factor	D2	D3	D4	D6
Vertical Load Rating (per free span)	N/A	70 lb / 30 kg	N/A	220 lb / 100 kg

HANGER



5:1 Safety Factor	D2	D3	D4	D6
	100 lb / 45 kg	200 lb / 90 kg	495 lb / 225 kg	770 lb / 350 kg

SWAY BRACING



Max Load (per cable)	D2	D3	D4	D6
	1.76 kN (Max)	3.53 kN (Max)	7.35 kN (Max)	14.71 kN (Max)

If cable is to be used as primary load support please refer to Gripple recommendations for hanging at angles.