

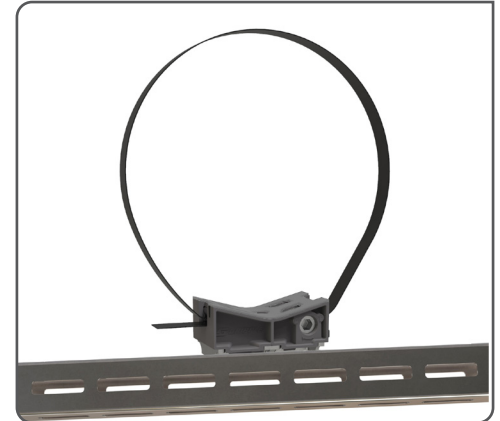
GCS (Above Mount / Racked)



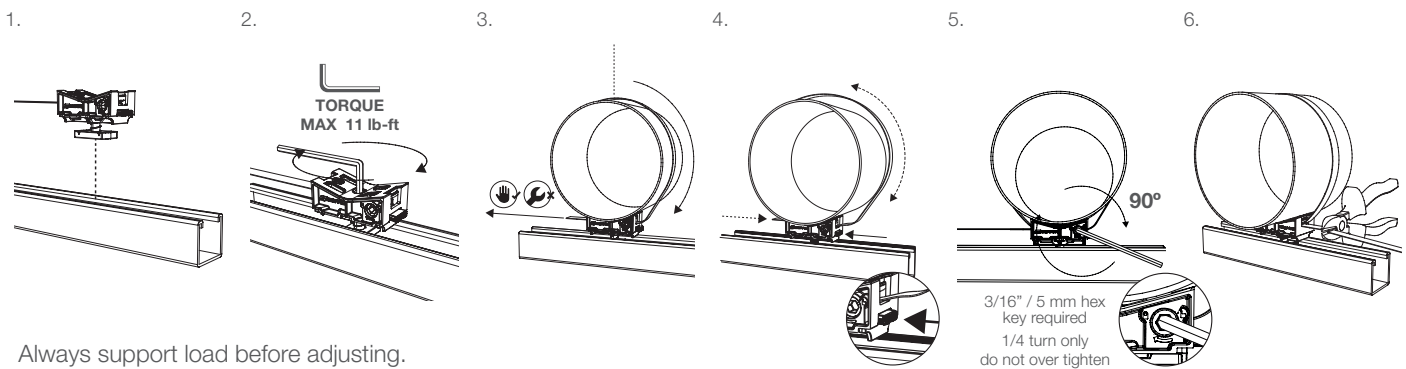
Versatile pipe clamp solution, replacing 11 pipe hanger sizes in one product, designed for use with standard strut channel profiles to secure up to 9" OD piping systems (inc. insulation) in multiple mechanical and plumbing applications.

FEATURES / BENEFITS

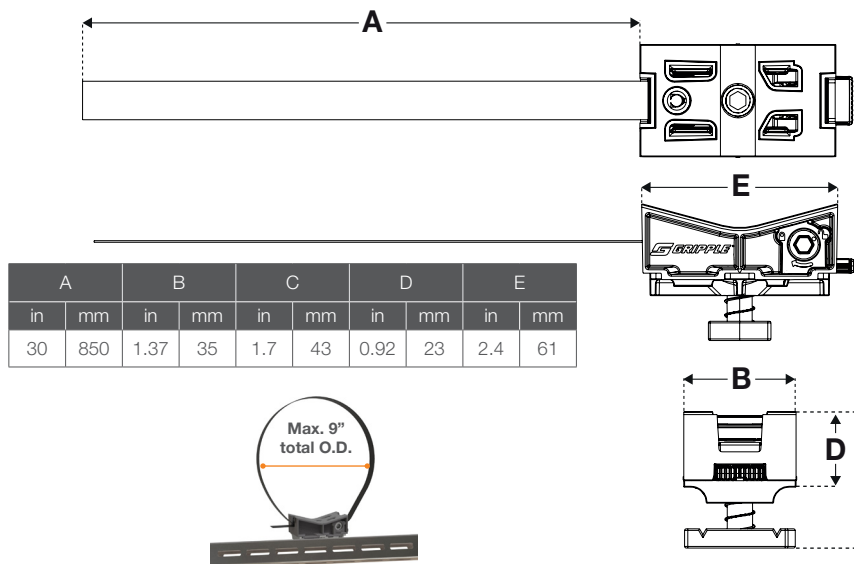
- Quick** – simple and secure attachment to channel with a 3/16" / 5 mm hex key
- Universal** – secures up to 9" OD piping systems, eliminating the need to stock multiple pipe clamps
- Versatile** – suitable for mechanical piping and plumbing applications including HVAC refrigerant piping, VRF systems, medical gas and domestic water
- Strong** – can be used to rack piping (refer to strut manufacturer for point loads)
- Robust** – secure fit to strut using the hex key allows safe transit of pre-built racks from off-site prefabrication shop to job site
- Safe** – stainless steel securing strap with non-conductive coating to prevent galvanic corrosion between dissimilar metals
- Adjustable** – prior to final lock, button release allows easy adjustment or addition of insulation after installation



INSTALLATION & ADJUSTMENT



SPECIFICATION



SUBMITTAL INFORMATION

Load Rating:

Safe Working Load:
850 lbs / 385 kg (3:1 safety factor)

Refer to strut manufacturer for bracket load capacity

Material:

Housing – ZA2 Zinc

Cover – 30% glass filled PP

Rubber Pad – EDPM

Wedge – Sintered steel hardened to min 50 Rockwell C

Spring Release Cartridge: Acetal

Locking Screw: Type ZA2 zinc

Strap: Stainless steel with non-conductive coating

Approvals:

UL listed UL2239 – Hardware for the support of conduit, tubing & cable – project file E251132

UL listed UL2043 – Plenum rating

ICC-PMG-1320 – Pipe Support & Hanging System