

# TCI -Threaded Concrete Insert (Metal Deck)



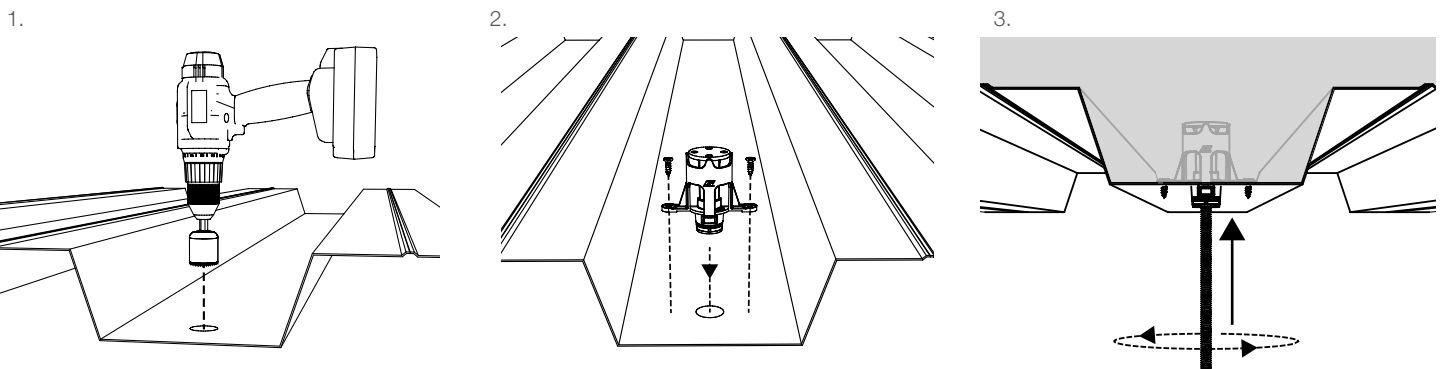
Cast-in-place concrete insert for the attachment of threaded rod below metal deck.

## FEATURES / BENEFITS

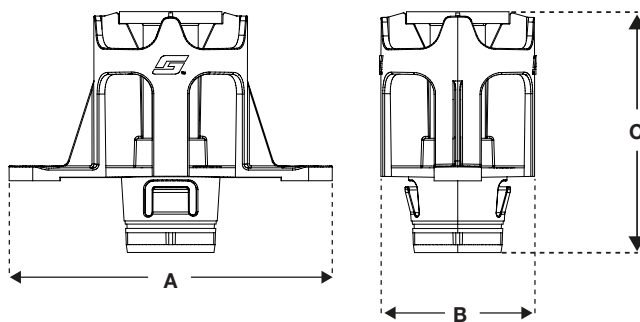
- **Simple** – allows the specification and stocking of one insert for a project with limited requirements, simplifying procurement
- **Robust** – low profile design aids impact protection; insert doesn't displace when kicked or knocked on site
- **Compatible** – Available for both 3/8" and 1/2" threaded rod
- **Strong** – up to 1350 lb / 612 kg safe working load
- **Optimised** – increased surface area allowing for more contact with concrete increasing the load
- **Secure** – four holes in the anchor design eliminates rotational movement when concrete is set
- **Safe** – integrated snap off tube for fire coat protection



## INSTALLATION

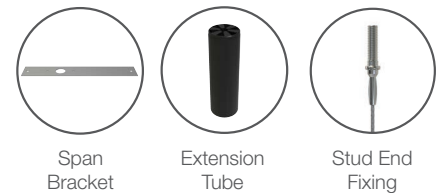


## SPECIFICATION



Dimension	inches / mm	
	3/8" thread	1/2" thread
A	3 1/4 in / 82 mm	3 1/4 in / 82 mm
B	1 1/2 in / 39 mm	1 1/2 in / 39 mm
C	2 3/8 in / 61 mm	2 3/8 in / 70 mm

## AVAILABLE ACCESSORIES



For more options on available accessories please contact us or visit [www.grippler.com](http://www.grippler.com)

## SUBMITTAL INFORMATION

### Material:

**Body** - PP

**Anchor** - BS3111 Type 0 Mild Steel

**Nail** - Q235 steel with Electro galvanized coating

**Plating** - Bright Nickel Plating (BS 4758)

### Sizes Available:

3/8" up to 730 lb / 331 kg with a 4:1 safety factor  
1/2" up to 1350 lb / 612 kg with a 4:1 safety factor