

Butterfly Trapeze



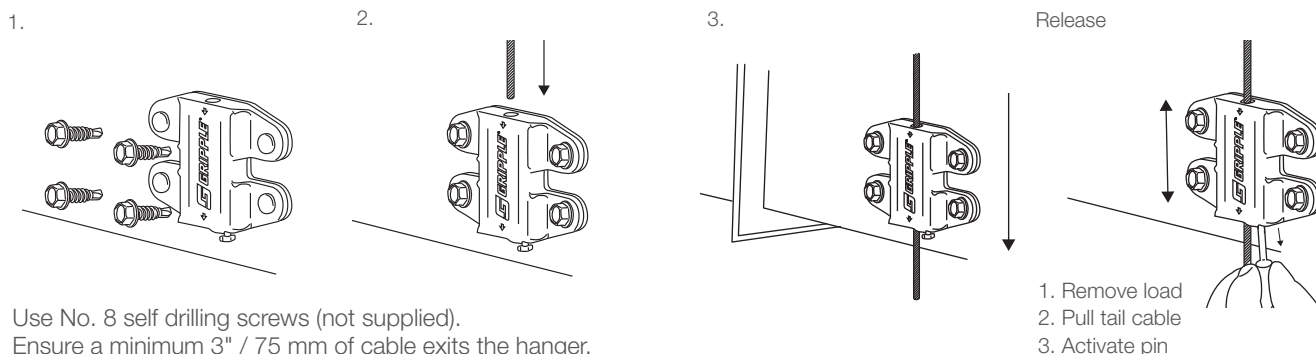
Ideal for single and multi-tiered suspension of rectangular ductwork and plenum boxes.

FEATURES / BENEFITS

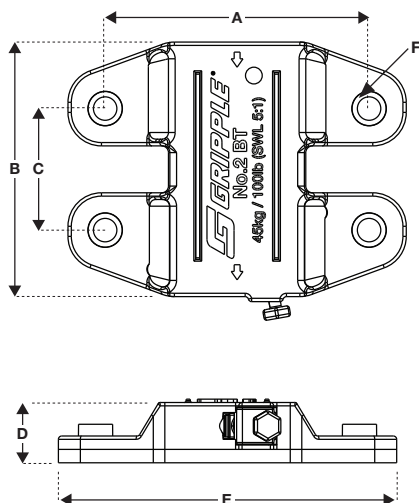
- **Simple** – can be installed directly to the ductwork at ground level, eliminating the need for channel
 - **Quick** – adjustment pin allows for rapid adjustment, no Setting Key required
 - **High performance** – rubber pad prevents air leakage and dampens vibration
 - **Strong** – industry approved, SMACNA verified
 - **Compatible** – suitable for all sheet metal gauges according to SMACNA
 - **Safe** – no tools or 'hot works' permit required for installation, improving health and safety on-site
- Supplied as a ready-to-use hanger kit with length of cable and pre-attached end fixing.



INSTALLATION & ADJUSTMENT



SPECIFICATION



Dimension	Size	
	Inches	mm
A	1 9/16	39
B	1 1/2	38
C	11/16	18
D	3/8	9
E	2	51
F	Ø 3/16	5

AVAILABLE END FIXINGS



For more options on available end fixings please contact us or visit www.gripple.com

SUBMITTAL INFORMATION

Safe Working Load:
100 lb / 45 kg @ 5:1 safety factor

Material
Housing - Type ZA2 Zinc
Wedge - Sintered steel hardened to min. 56 Rockwell C
Spring - Stainless Steel (Type 302)
End Cap - UV Stabilized homopolymer propylene
Rubber Pad - EPDM 40±5 SHORE A
Pin - A2 Stainless Steel