

Catenary Kit



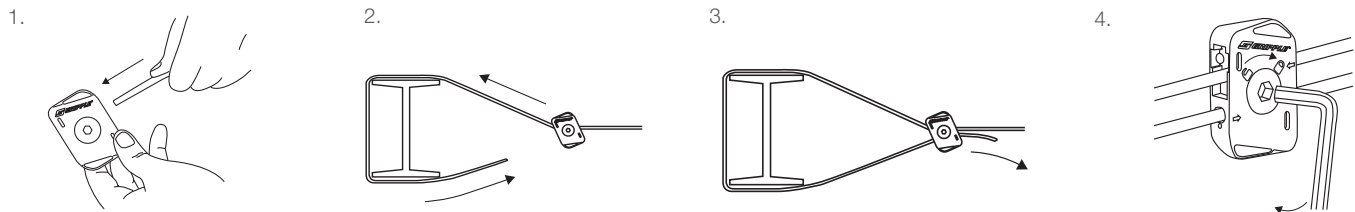
Create secure, overhead spans by running high strength cable between two fixing points. Ideal for applications where no direct vertical anchor point is available.

FEATURES / BENEFITS

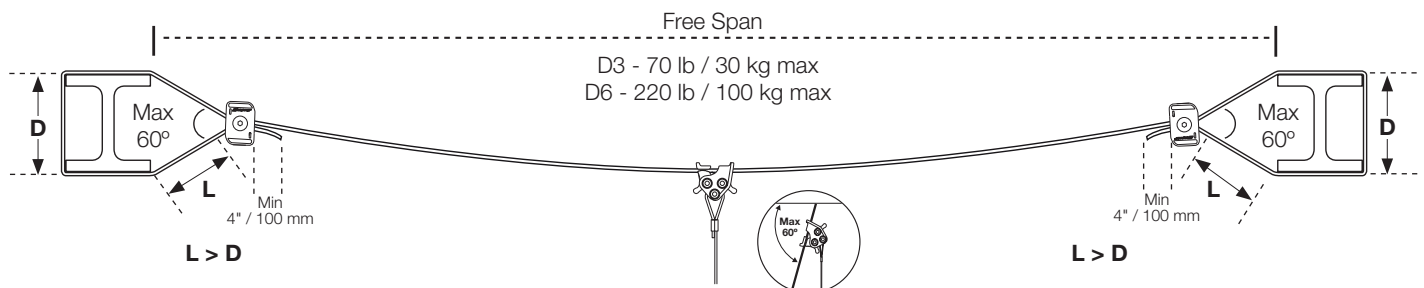
- **Versatile** – the light duty 1/8" / 3 mm version is ideal for suspending lightweight electrical services, ductwork and signage. The heavy duty 1/4" / 6 mm version is perfect for suspending M&E or HVAC services, or where a long catenary is required.
- **Quick** – fewer components compared to traditional methods, up to six times faster to install than traditional suspension systems
- **Aesthetic** – the design complements enclosed and open soffit spaces providing a discreet finish
- **Safe** – no 'hot works' permit required for installation, improving health and safety on-site
- **Easily tensioned** – using the Gripple Catenary Tensioning Tool reducing time spent working at height
- **Secure** – locking mechanism in the Lockable Plus prevents dynamic movement
- **Strong** – industry approved
- **Lightweight** – easy to move and handle on-site, whilst reducing the load on the building structure



INSTALLATION & ADJUSTMENT



SPECIFICATION



SUBMITTAL INFORMATION

Load Rating:

Light duty 1/8" / 3 mm version
Up to 70 lb / 30 kg vertical load per free span
Connection type: 1/8" / 3 mm C-Clip
Not suitable for use with any Tensioning Tool
Heavy duty 1/4" / 6 mm version
Up to 220 lb / 100 kg vertical load per free span
Connection type: 1/4" / 6 mm C-Clip
Can be used with CTI D6 Tensioning Tool

Material:

Ceramic rollers and stainless springs

Specifications:

D3 - Galvanized 7x7, 1/8" / 3 mm steel cable
D6 - Galvanized 7x19, 1/4" / 6 mm steel cable

Approval:

UL 1598 - CANADA UL Approval for
Luminaire fittings (Cable Strut System)

AVAILABLE ACCESSORIES



CTI D6
Tensioning
Tool



1/8" / 3 mm
C-Clip



1/4" / 6 mm
C-Clip

For more options on available end fixings
please contact us or visit www.gripple.com