

Duct Trapeze



Ideal for single and multi-tiered suspension of rectangular ductwork.

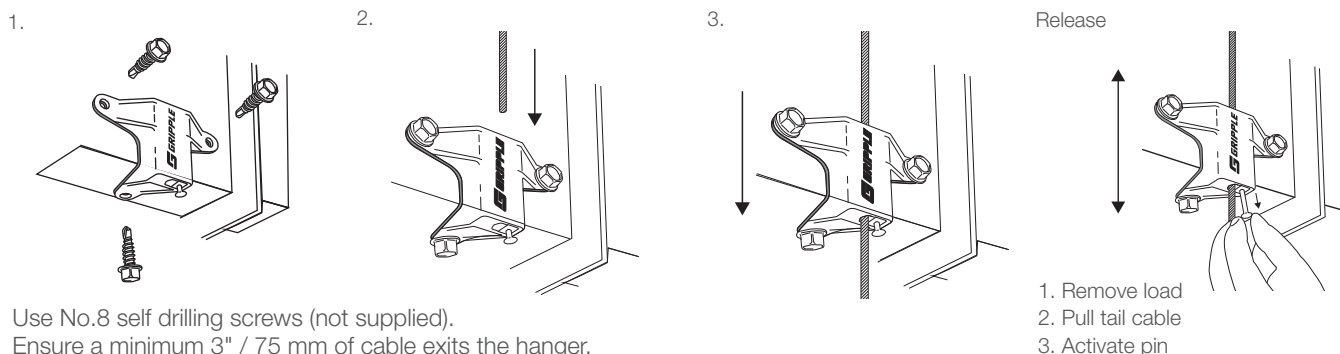
FEATURES / BENEFITS

- **Quick** – adjustment pin allows for rapid adjustment, no setting key required
- **High performance** – rubber pad prevents air leakage and dampens vibration
- **Strong** – industry approved, SMACNA verified
- **Compatible** – suitable for all sheet metal gauges according to SMACNA
- **Safe** – no tools or 'hot works' permit required for installation, improving health and safety on-site

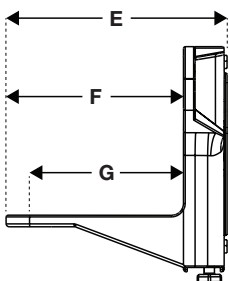
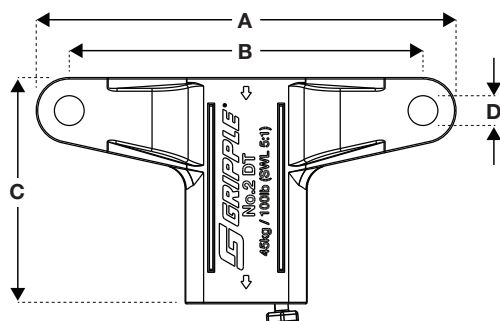
Supplied as a ready-to-use hanger kit with length of cable and pre-attached end fixing.



INSTALLATION & ADJUSTMENT



SPECIFICATION



Dimension	Size	
	Inches	mm
A	2 3/4	70
B	2 5/16	59
C	1 1/2	38
D	Ø 3/16	5
E	1 1/2	38
F	1 1/8	29
G	29/32	23

AVAILABLE END FIXINGS



For more options on available end fixings please contact us or visit www.grippler.com

SUBMITTAL INFORMATION

Safe Working Load:
100 lb / 45 kg @ 5:1 safety factor

Material:
Housing - Type ZA2 Zinc
Wedge - Sintered steel hardened to min. 56 Rockwell C
Spring - Stainless Steel (Type 302)
End Cap - UV Stabilized homopolymer propylene
Rubber Pad - EPDM 40±5 SHORE A
Pin - A2 Stainless Steel