

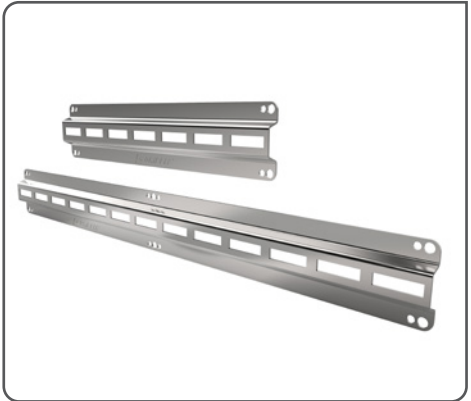
Low Profile Bracket



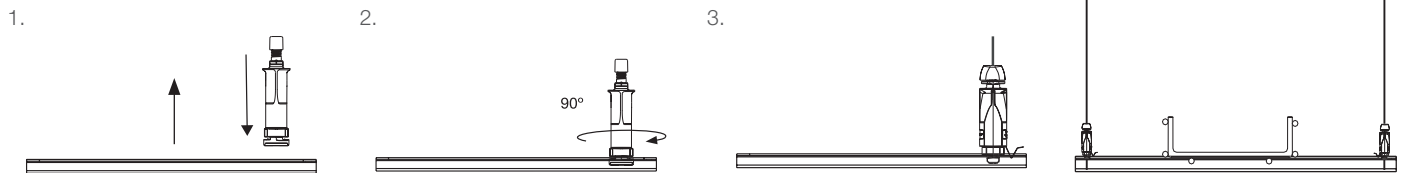
Supplied with QT Compact Clamps for quick and easy support of pipework within mechanical and plumbing services.

FEATURES / BENEFITS

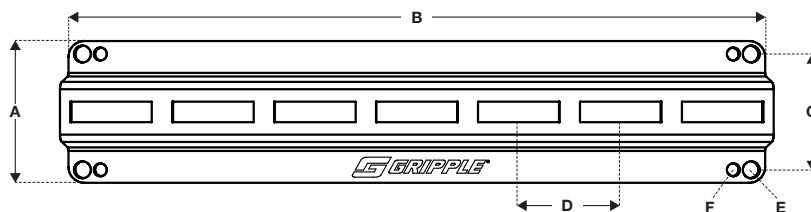
- **Quick** – pre-cut lengths eliminate the need for cutting channel on-site, allowing more productive use of labour
- **Versatile** – can be bolted directly to soffit or wall with less than 5/8" / 15 mm depth and can also be used as a shallow bearer for support of electrical service
- **Compatible** – brackets are supplied with QT Clamps or QT Compact Clamps featuring quarter turn fixing
- **Safe** – improved health and safety as no tools or 'hot works' permits are required for installation
- **Strong** – up to 330 lb / 150 kg load rating in sizes ranging from 1 ft to 4 ft



INSTALLATION



SPECIFICATION

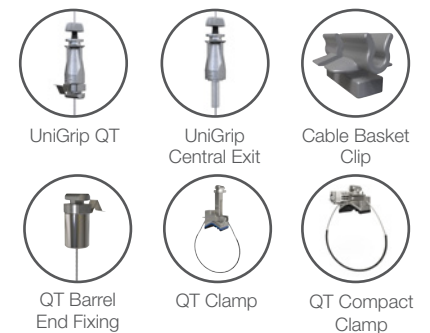


	A		B		C		D		E Ø		F Ø		Recommended No. of fixings	Max Single Point Load		Max Uniform Load	
	In	mm	In	mm	In	mm	In	mm	In	mm	In	mm		lb	kg	lb	kg
LPB1FT	3 1/16	78	13 3/4	350	2 9/32	58	2	50	11/32	8.5	1/4	6.5	4	165	75	330	150
LPB2FT	3 1/16	78	25 9/16	650	2 9/32	58	2	50	11/32	8.5	1/4	6.5	4	165	75	330	150
LPB3FT	3 1/16	78	37 3/8	950	2 9/32	58	2	50	11/32	8.5	1/4	6.5	6	165	75	260	120
LPB4FT	3 1/16	78	47 1/4	1200	2 9/32	58	2	50	11/32	8.5	1/4	6.5	6	165	75	260	120



Load ratings displayed in the table relate only to suspended piping, electrical, conduit & other applications where the Low Profile Bracket is fixed direct to the deck. For any other applications, including using the Low Profile Bracket as a bearer, please contact Gripple Technical Services

SUSPENSION METHODS AND RELATED PRODUCTS



For more options on related products please contact us or visit www.gripple.com

SUBMITTAL INFORMATION

Load Rating:
See table in specification

Material:
BS EN 10346:2009 DX51D (Mild Steel)

Approvals:
Lloyds certified
UL 2239