

The Gripple T-Clip securely fastens fencing wire at an end post. Easily installed without the need to tie or knot wire.

## FEATURES / BENEFITS

- Eliminates tying and knotting wires, reducing installation time
- No need to cut and remove vertical wire
- The twist on action provides a secure termination
- High grade ceramic roller for corrosion resistance
- Two sizes available for both stock fencing or barbed wire applications



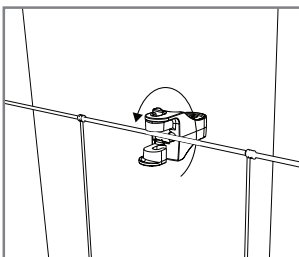
## SPECIFICATION

Product	Wire Type	Wire Range	Standard Wire Gauge
T-Clip 1	Plain wire	1.80 mm - 3.25 mm	15 SWG - 10 SWG
	High tensile barbed	2 x 1.60 mm - 2 x 1.70 mm	2 x 15½ SWG
T-Clip 2	Plain, Field, Electric	3.25 mm - 4.20 mm	10 SWG - 7½ SWG
	Mild steel barbed	2 x 1.80 mm - 2 x 2.50 mm	2 x 15 SWG - 2 x 12½ SWG

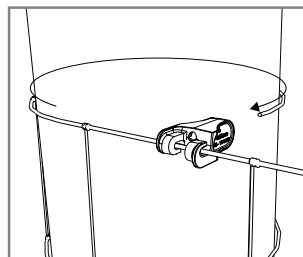
*Load dependent on accompanying Gripple Plus or Barbed tensioner. Never tension T-Clip directly.*

## INSTALLATION

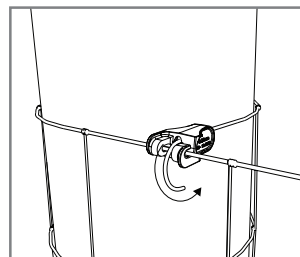
1.



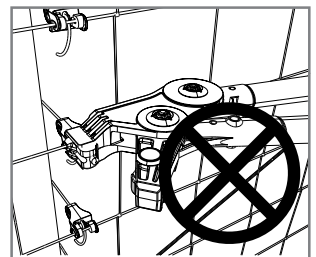
2.



3.



Never tension directly



## TIPS

- On field fence, install the T-Clip as close to the end post as possible, inside the closest vertical
- Hand fasten T-Clip, never tension directly with tensioning tool
- To make the installation easier nearer the ground, install T-Clip upside down and bend wire upwards

