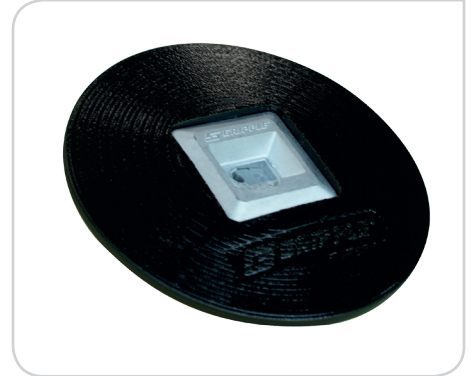


Two piece multi-purpose design incorporates patented Gripple technology with a UV stabilised, injection moulded, load bearing plate.

FEATURES / BENEFITS

- 100 mm GF Nylon, UV stabilised, injection moulded plastic disc
- Accepts 3 mm wire
- Zinc die-cast housing
- Low profile design
- Pre-assembled kit ensures time and labour savings



ANCHOR OPTIONS



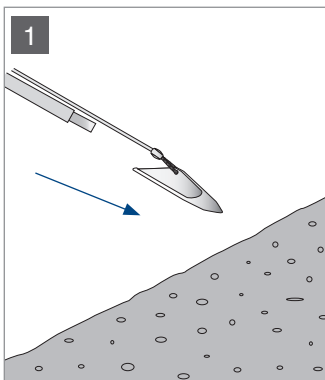
TL-A2

- Zinc die-cast anchor head
- Surface area 1,940 mm²
- 225 kg System Working Load*
- 500 kg Ultimate Load*

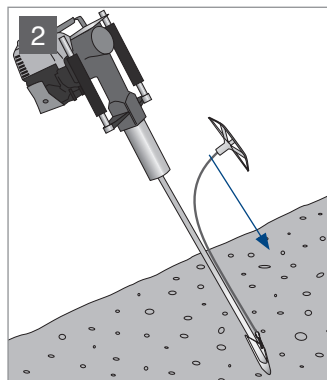


TL-A3

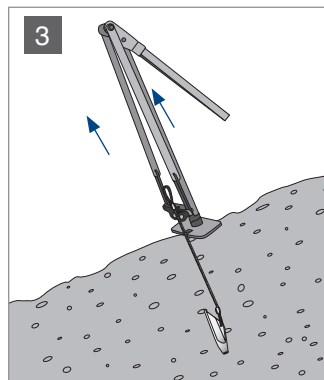
- Zinc die-cast anchor head
- Surface area 3,870 mm²
- 450 kg System Working Load*
- 800 kg Ultimate Load*



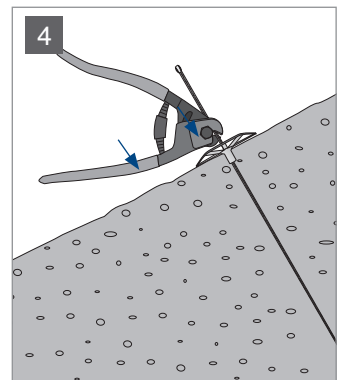
Step 1
Insert Drive Rod through the anchor and place against surface.



Step 2
Use GPD to install the anchor at the required depth.



Step 3
Use Jackjaw to remove Drive Rod and lock load system.



Step 4
Use Gripple Wire Cutter to remove excess and cut below the TL inset level.

* All load ratings are to be used as a guide and are ground dependent