

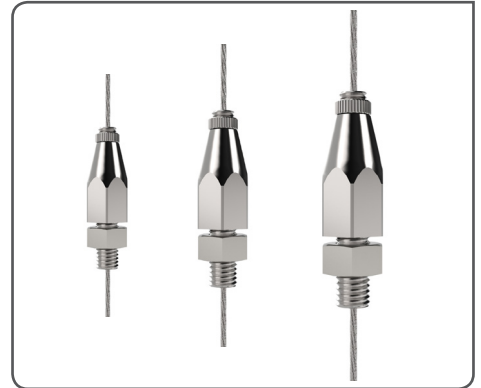
Trapeze Plus Range



All steel Trapeze Plus with galvanized cable is packed with new features to make the suspension of building services even more secure and durable

FEATURES / BENEFITS

- Reduced time working at height; pre-install into channel using the pre-fitted washer and channel nut supplied
- Tool free setting
- Easy-to-use integral release button to allow fine adjustment
- Tighten the locking screw for ultimate security
- Channel can be multi-tiered to optimize space
- Supplied as a ready-to-use kit with a wide range of end fixings
- Sizes available; No. 2 100 lbs, No. 3 200 lbs and No. 4 500 lbs with a 3:1 safety factor
- Also available with M8/M10 and M12 (Trapeze Plus No.4) flange nut



INSTALLATION & ADJUSTMENT

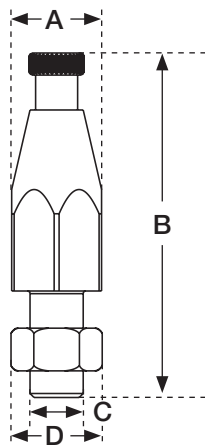
1) Remove load
2) Pull tail cable through
3) Release button

Lock

Multi-tiered.

Ensure a minimum 3 inches of tail cable exits the hanger.

SPECIFICATION



Also available with
M8, M10 and M12
(No.4) flange nut

Dimension	No.2 (inches)	No.3 (inches)	No.4 (inches)
A	0.78	0.78	0.78
B	2.28	2.28	2.28
C	M8	M10	M10
D	0.78	0.78	0.78

AVAILABLE END FIXINGS



For more options on available end fixings please contact us or visit www.gripple.com

SUBMITTAL INFORMATION

Safe Working Load:

- No.2 cable - 100 lbs @ 3:1 safety factor
- No.3 cable - 200 lbs @ 3:1 safety factor
- No.4 cable - 500 lbs @ 3:1 safety factor

Material:

- Carriage** - Mild Steel (Type EN1A) - Bright Zinc Plated
- Balls** - Grade 40 Chrome Steel
- Spring** - Stainless Steel (Type 302)
- Locking nut** - (knurled) Mild Steel (Type EN1A) - Bright Zinc Plated
- Threaded Adapter** - Mild Steel (Type EN1A) - Bright Zinc Plated
- Housing** - Mild Steel (Type EN1A) - Bright Zinc Plated
- Nut** - Mild Steel (Type EN1A) - Bright Zinc Plated

PI-TRAPEZEPLUS-US

www.gripple.com

Gripple's policy is one of continuous development and innovation. We therefore reserve the right to alter specifications, etc. without notice.



Gripple Inc | 1611 Emily Lane | Aurora, IL 60502 | USA

Tel +1 866 474 7753 Fax +1 800 654 0689 email usinfo@gripple.com