

Ceiling Anchor



For the suspension of HVAC, Mechanical, Lighting & Electrical services in an indoor stationary setting.
NOT suitable for use in chlorinated / swimming pool environments.

APPLICATION / MATERIAL SPECS

For fixing into concrete ceilings. Knock into a pre-drilled hole, pull with a claw hammer to set.

MATERIAL

Cable: Galvanized high tensile steel cable to EN12385.

Standard lengths from 5ft-30ft, other lengths can be made to order.

	No. 1	No. 2
Cable Dia. (in.)	1/16"	5/64"
Strand configuration	7x7	7x7

Concrete Anchor: Carbon Steel

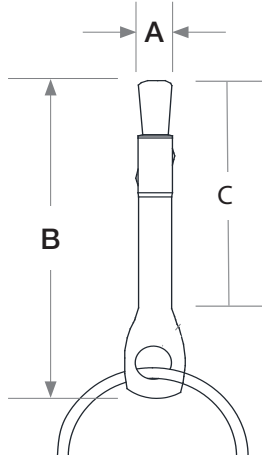
CEILING ANCHOR

Ceiling anchor for use with No.1 & No.2 Gripple cable hanger kits*



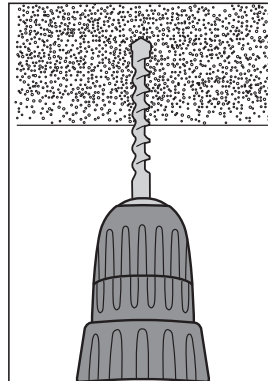
* Refer to fastener load ratings and safety factors.

SIZE SPECS

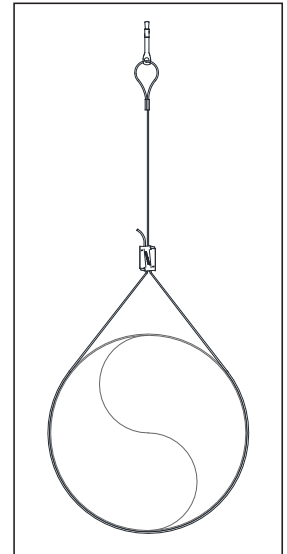
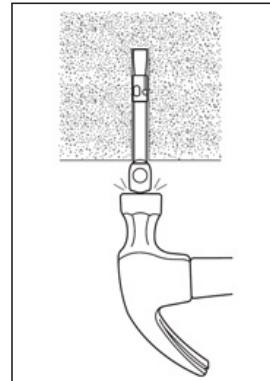


Size	A (in.)	B (in.)	C (in.) ϕ
No. 1	1/4"	2 9/16"	2"
No.2	1/4"	2 9/16"	2"

INSTALLATION



Hole to be drilled:
1/4"



Spiral Duct

