



Image Courtesy of GT3 Architects

G GRIPPLE
CASE STUDY
Kirkby Leisure Centre
 Kirkby-in-Ashfield, UK




HOURS SAVED*
475 HOURS

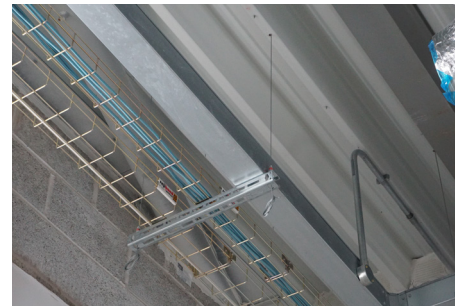
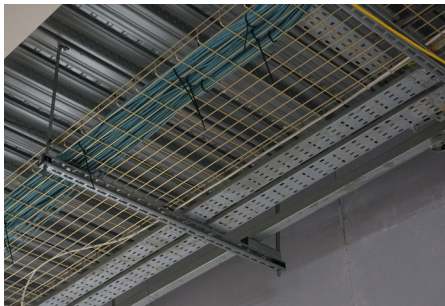
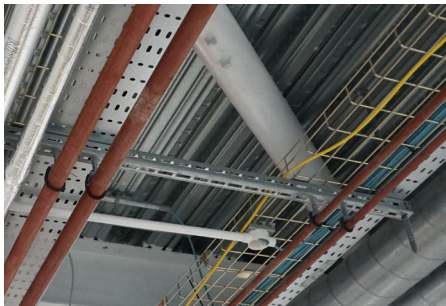
EMBODIED CO₂ SAVED
2,459 KG

MATERIAL WEIGHT SAVED
1,083 KG

Grippple worked with Ambivent to supply electrical and mechanical containment to this new two-storey leisure centre facility in Kirkby-in-Ashfield, Nottinghamshire. Ambivent utilised Grippple's new and improved **Fast Trak** bracket system along with **Trapeze Plus FR** and **UniGrip** wire rope kits, **Universal Brackets**, **QT Universal Clamps**, **CB Clips** and **CT Clips**.

| Project Summary | |
|------------------------|---------------------------------------|
| Main contractor | Kier Construction |
| Subcontractor | Ambivent Ltd |
| Building Type | Leisure |
| Services | Mechanical and Electrical Containment |

| Featured Products | |
|--|---|
| <p>Fast Trak</p>  | <p>Trapeze Plus FR</p>  |



"Using Fast Trak gave us versatility, allowing us to fit all mechanical and electrical services in one joint installation. This assisted us to secure the tight programme and control the material costs."

- Site Supervisor, Ambivent Ltd -

SAVING SUMMARY

| | Grippple solution | Traditional method |
|--------------------------------|--|--|
| Overview | Fast Trak, Trapeze Plus FR, Universal Brackets, QT Universal Clamps and UniGrip | Channel, threaded rod and channel nuts |
| Installation Time | 328 hours | 803 hours |
| Total Material Weight | 1,212 kg | 2,295 kg |
| Total Embodied CO ₂ | 2,751 kg | 5,210 kg |
| Total Labour Cost | £8,200 | £20,075 |

Data taken from the following sources:
 BSRIA guide 'The Inventory of Carbon & Energy'. Channel based on typical weight and Embodied Carbon value for recycled ROW construction.
 Threaded Rod Weight Taken from DIN975 Document 'http://www.dinstock.com/useruploads/files/threaded_rods_din975.pdf'
 Embodied CO2 Constant Multiplier (kg CO2/ kg material) Taken From ICE (Inventory of Carbon and Energy) Document
 Author: Dr. Craig Jones & Professor Geoffre Hammond. Version: V3.0 = 10 Nov 2019 http://www.circularrecology.com/embodied-energy-and-carbon-footprint-database.html

*Figure based on one installer working for eight hours a day at £25 an hour



Image Courtesy of GT3 Architects

PROJECT DETAILS

Kirkby Leisure Centre in Kirkby-in-Ashfield, Nottinghamshire, is a brand new £15.5m facility, boasting state-of-the-art swimming pools, climbing walls and a gym. The new leisure centre is due to open in September 2022 and has been built alongside the existing leisure centre, Festival Hall. The build programme has strict lead times on-site as the new leisure centre needs to be complete before demolition of the old Festival Hall can take place.

Due to the need for speed on this project, Grippple's new and improved rapid trapeze bracket solution, Fast Trak, was selected by M&E subcontractor, Ambivent, in order to suspend pipework and electrical containment services. Fast Trak allowed Ambivent to combine M&E services onto one bracket instead of having to double tier brackets which helped to further increase efficiency.

Fast Trak is a versatile, pre-fabricated, off-site solution that vastly simplifies the installation of electrical containment, pipework and ductwork in building services applications. The four-sided bracket provides a suspension point on every face; ideal for the installation of combined bracketry and multi-tiered configuration to accommodate additional services. This was a huge benefit for Ambivent's installation team at Kirkby Leisure Centre.

The ability to install building services above and below the Fast Trak bracket along with using different tiers for different containment helped with flexibility and cost savings, as it has enabled Ambivent to suspend electrical containment above the bracket and pipework services below.

When speaking of the use of Grippple on this project, Ambivent's Site Supervisor said: "Our close working relationship with Grippple over the years has proven to be a successful venture. We collaborated early on this project and throughout we received a fast and reliable

service, with help always at the end of the phone. Grippple provided on-site pull tests which always provide confidence as some installers are cautious when moving away from a traditional system."

Ambivent installed Trapeze Plus FR and Universal Brackets to suspend pipework on-site. This was to navigate the roof decking on the upper floor of the two-storey leisure centre. Trapeze Plus FR was fastened to the roof profile with an M8 Stud end fixing. Trapeze Plus FR kits have been independently tested and offer a fully compliant, fire-resistant suspension system which is suitable for a range of applications. Adjustments can be made completely tool-free, allowing installers to save time and labour and allow for changes during installation.

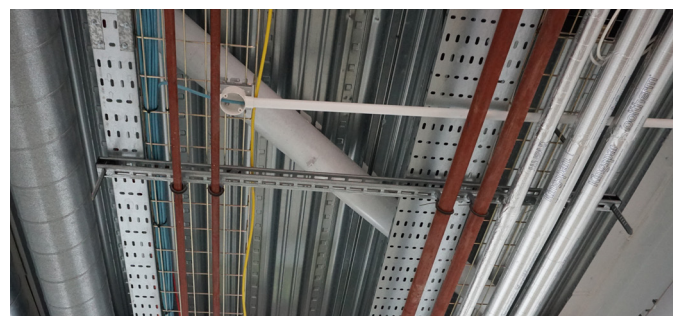
Kirkby Leisure Centre is part of a low carbon initiative in the area so it was crucial that carbon savings were as high as possible on the project. Fast Trak was an ideal product for this project as Fast Trak delivers significant cost and labour savings, carbon efficiencies and minimises health and safety concerns.

The simplicity of the Fast Trak system reduces the labour requirement on-site, while also reducing the time spent working at height and removing the need for cutting and filing. Fast Trak, along with other Grippple products selected for this site, provided an embodied carbon saving of 2,459 kg (when compared with traditional methods).

Speaking on the collaboration with Ambivent, Grippple Area Sales Manager, Charlotte Wroe, commented: "Fast Trak enabled Ambivent to combine electrical containment and pipework on one bracket at short drop lengths. We came to the site to pull test both the concrete and tin to check the suitability of both bracketry systems. I have been back to the site since where the feedback from Ambivent's team has been brilliant."

"It normally takes us over a week to install pipework on a floor this size. By using Fast Trak on this project, it only took our team two days! It's a really easy system to use and our team will definitely be using it again on other sites."

- Site Supervisor, Ambivent Ltd -



WWW.GRIPPLE.COM