



Pipework Solutions

Time-saving installation for a variety of pipework services



- Quick and easy to install
- Saves labour, time and costs on-site
- "Out of the box" solutions

QT Universal Clamp

Page 4

Universal Bracket

Page 5

Fast Trak - Standard

Page 12

QT Compact Clamp

Page 6

Low Profile Bracket

Page 7

Universal Clamp

Page 8

Fast Trak - Low Profile

Page 13

Height Adjustable Universal Clamp

Page 9

UniGrip

Pages 10-11

Fast Trak - Side Loading

Page 14

Pipe Insulation Collars

Page 15

Standard Hanger

Page 16

Express

Page 17

Universal Bracket Beam Clamp

Page 18

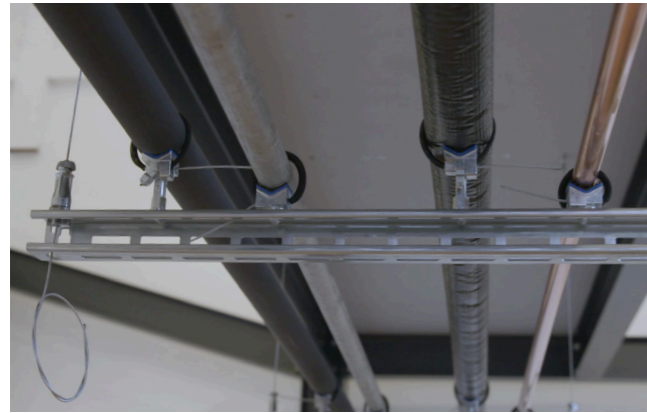
The Gripple® range of supports and hangers has been developed to provide a fast and versatile solution for suspending all types of pipework.

Gripple products are designed to save time, labour and reduce costs by making the installation quicker and easier. Supplied in ready-to-use kits, the products in this range require no on-site cutting and eliminate the need for fabricating pipe bracket assemblies, offering enormous health and safety benefits for your project.

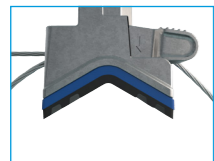
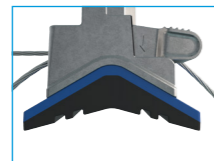
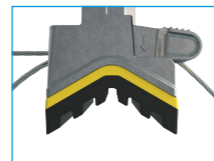
QT Universal Clamp

Designed for use with Gripple Brackets to provide quick and easy pipework installation.

- Quick** – up to ten times faster than traditional methods due to integral mounting pillar and quarter turn attachment to Universal Bracket
- Simple** – no tools required for installation
- Universal** – replaces more than 13 different pipe rings from 15 mm copper to 6" steel
- Robust** – retractable sleeve, pre-fitted to wire rope to prevent galvanic corrosion
- Versatile** – a variety of rubber pads provide insulation against vibration (noise reduction up to 23 db)
- Strong** – 75 kg SWL with a 3:1 safety factor
- Compatible** – available with Kooltherm/Armaflex pipe collars for insulated pipe
- Safe** – supplied in ready-to-use kits with Gripple Brackets, for easy site storage and waste reduction



Pad Variants

	Standard Rubber pad for insulation purposes 14 dBa reduction.		Large Improved fit for large diameter pipe or spiral duct 18 dBa reduction.		Acoustic Designed to reduce noise related to water pressure 23 dBa reduction
--	---	---	---	--	--

Clamps are supplied individually or as part of a bespoke bracket system to suit your application.

Installation Steps

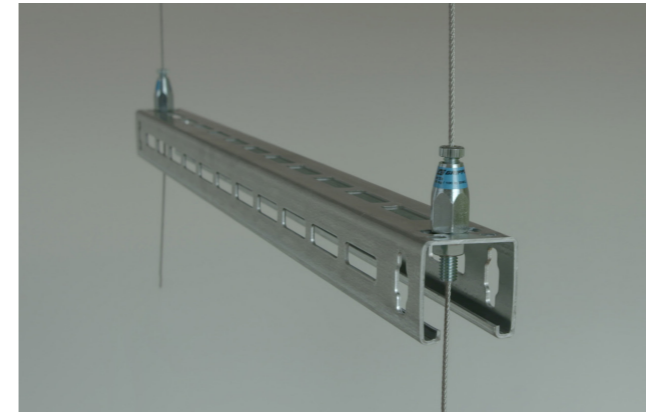


Contact Gripple for full product information, submittal data and technical support.

Universal Bracket

Universal Brackets are designed for quick and easy support of electrical containment, pipework and other mechanical services.

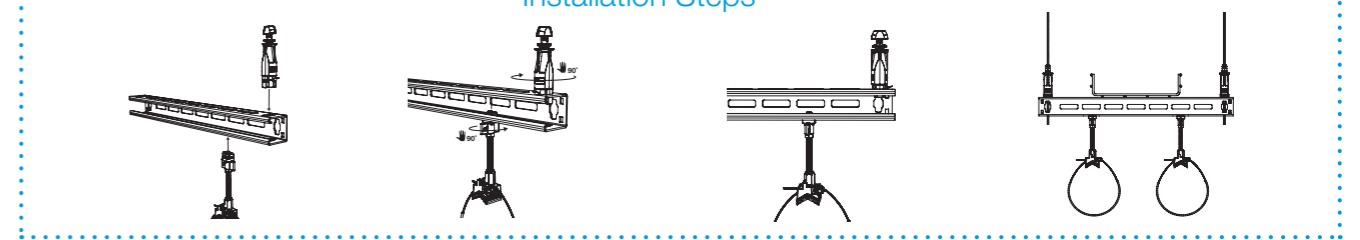
- Fire Rated** – tested to F120 in accordance with BS EN 1363-1:2020 temperature curve. See 'u' orientation section on Fire Rated Product Matrix, contact Gripple Technical Services for more information
- Quick** – pre-cut lengths eliminate the need for cutting channel on-site, allowing more productive use of labour
- Versatile** – can be bolted directly to soffit or wall, or suspended from the soffit using a Gripple Hanger e.g. Trapeze Plus FR
- Compatible** – uniform slots on three sides allow accurate alignment of Gripple clamps and QT accessories with the fourth side permitting the use channel / strut accessories
- Safe** – improved health and safety as no tools or 'hot works' permit required for installation
- Strong** – increased load ratings of up to 200 kg, available in sizes ranging from 235 mm to 1535 mm
- Flexible** – perfect for multi-service installations



Size Variants¹

	System Rating¹ Up to 200 kg SWL (for full submittal data please contact Gripple)	Bracket Size Available in 100 mm increments from UB-170 - UB-1470*
---	---	--

Installation Steps

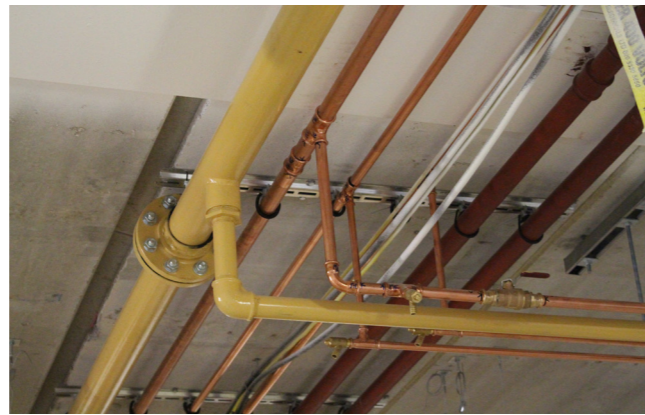
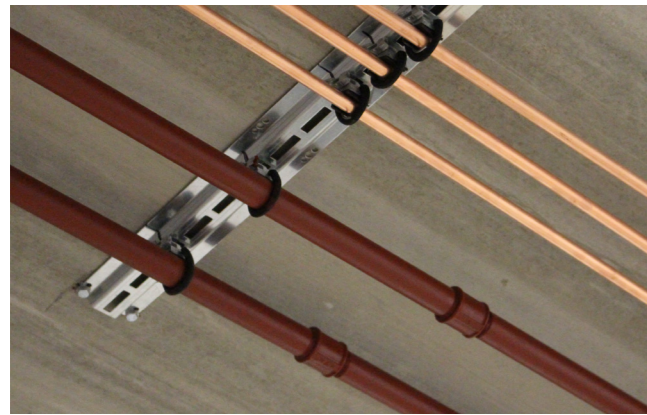


Do not adjust under load. ¹Tested at ambient temperatures, contact Gripple for full product information, submittal data and technical support. *Product codes relate to suspension space for positioning services onto the brackets, not the full length of the bracket.

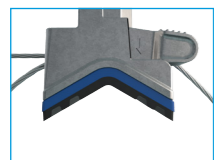
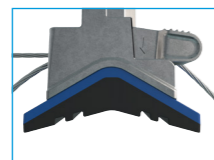
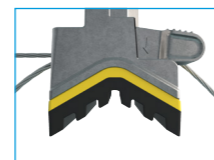
QT Compact Clamp

Used in conjunction with Gripple Brackets for quick and easy support of all types of pipework within mechanical and plumbing services.

- Quick** – up to ten times faster than traditional methods due to quarter turn attachment to Gripple Brackets
- Simple** – no tools required for installation
- Universal** – replaces more than 13 different pipe rings from 15 mm copper to 6" steel
- Robust** – retractable sleeve, pre-fitted to wire rope to prevent galvanic corrosion
- Versatile** – a variety of rubber pads provide insulation against vibration (noise reduction up to 23 db)
- Strong** – 75 kg SWL with a 3:1 safety factor
- Compatible** – available with Kooltherm/Armaflex pipe collars for insulated pipe
- Safe** – supplied in ready-to-use kits with Gripple Brackets, for easy site storage and waste reduction

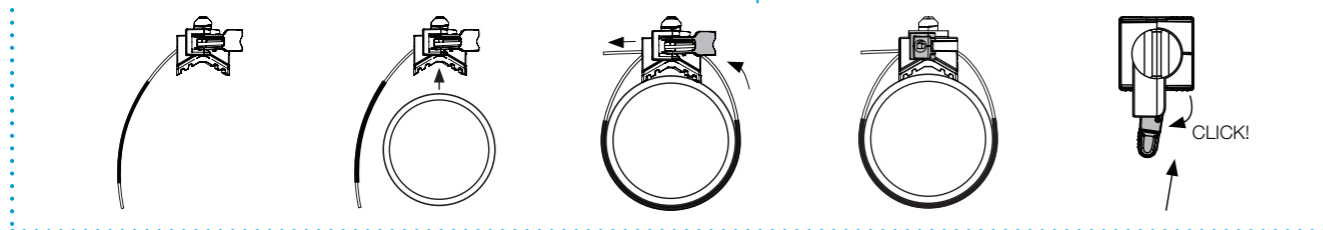


Pad Variants

	Standard Rubber pad for insulation purposes 14 dBa reduction.		Large Improved fit for large diameter pipe or spiral duct 18 dBa reduction.		Acoustic Designed to reduce noise related to water pressure 23 dBa reduction
--	--	---	--	--	---

Clamps are supplied individually or as part of a bespoke bracket system to suit your application.

Installation Steps



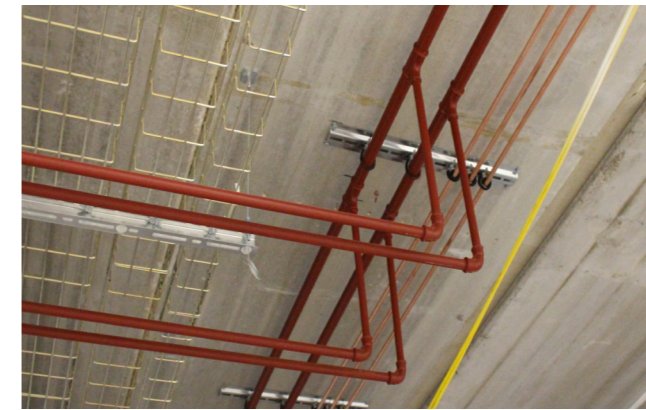
Contact Gripple for full product information, submittal data and technical support.

Low Profile Bracket

Can be supplied with Gripple Pipe Clamps for quick and easy support of pipework within mechanical and plumbing services.



- Fire Rated** – tested to F120 in accordance with BS EN 1363-1:2020 temperature curve
- Quick** – pre-cut lengths eliminating the need for cutting channel on-site, allowing more productive use of labour
- Compatible** – brackets are supplied with QT Universal Clamps or QT Compact Clamps featuring quarter turn fixing
- Safe** – improved health and safety as no tools or 'hot works' permit required for installation
- Strong** – 150 kg load rating in sizes ranging from 250 mm to 1550 mm



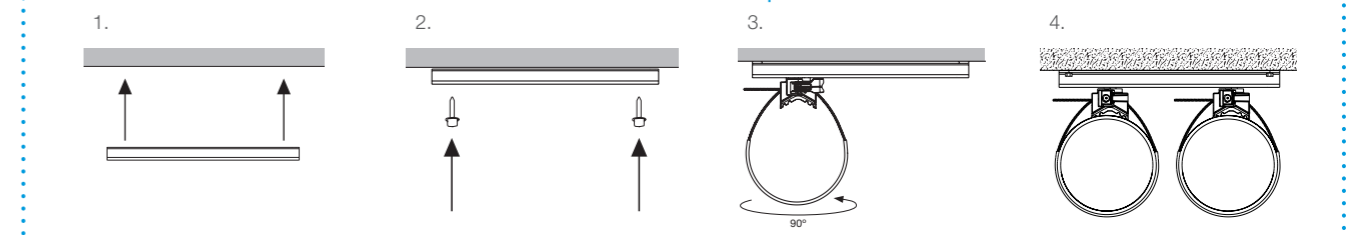
Size Variants¹



Available in 100 mm increments, from 250 mm - 1550 mm
Up to 150 kg SWL (for full submittal data please contact Gripple)

Can be supplied as ready-to-use kits with a choice of QT Universal Clamps or QT Compact Clamps.

Installation Steps



Do not adjust under load. ¹Tested at ambient temperatures, contact Gripple for full product information, submittal data and technical support.

Universal Clamp

Designed for use with Gripple Brackets to provide quick and easy pipework installation.

Flexible – M8/M10 dual thread allows for flexible attachment to Gripple brackets, channel and rod

Universal – replaces more than 13 different pipe rings from 15 mm copper to 6" steel

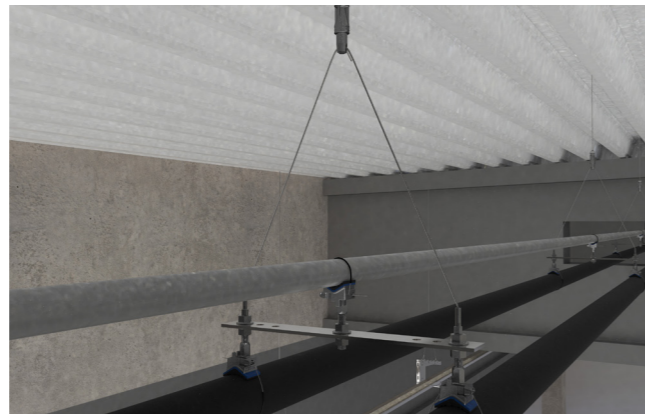
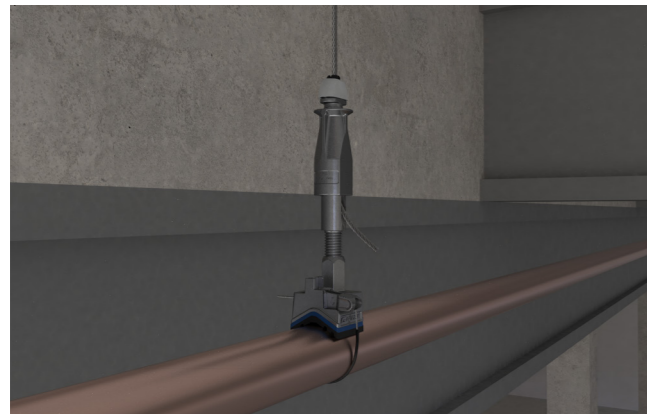
Robust – retractable sleeve, pre-fitted to wire rope to prevent galvanic corrosion

Versatile – a variety of rubber pads provide insulation against vibration (noise reduction up to 23 db)

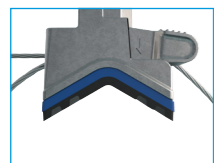
Strong – 75 kg SWL with a 3:1 safety factor

Compatible – available with Kooltherm/Armaflex pipe collars for insulated pipe

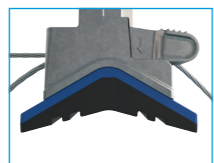
Environmentally friendly - reduced components compared to traditional methods, reducing waste and allowing easy on-site storage



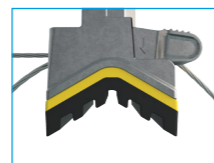
Pad Variants



Standard
Rubber pad for insulation purposes
14 dBa reduction.



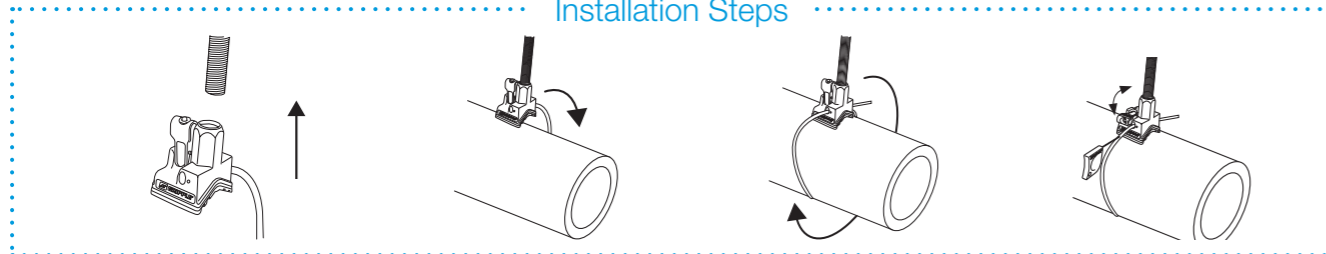
Large
Improved fit for large diameter pipe or spiral duct
18 dBa reduction.



Acoustic
Designed to reduce noise related to water pressure
23 dBa reduction

Clamps are supplied individually or as part of a bespoke bracket system to suit your application.

Installation Steps



Contact Gripple for full product information, submittal data and technical support.

Height Adjustable Universal Clamp

Quick install pipe clamp solution which enables installation at varying heights from the bracket; ideal for instances where different sized pipes require aligning along the centre axis.

Finite adjustment – make height adjustments to suit exact requirements

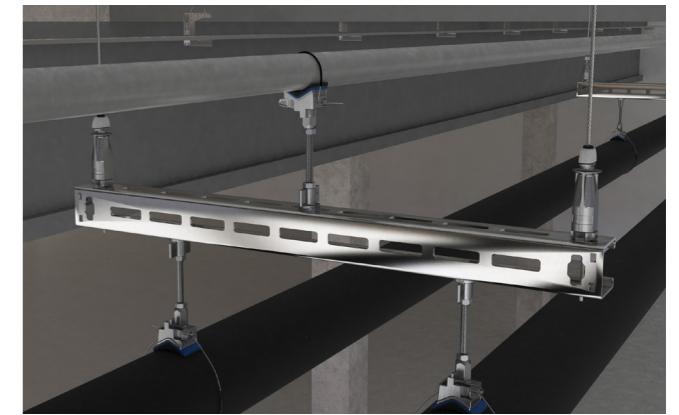
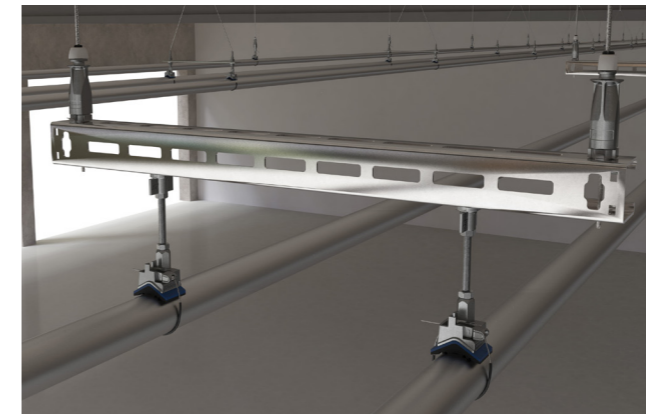
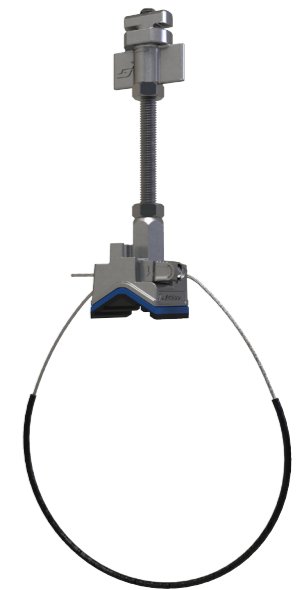
Quick installation – simple quarter turn attachment to bracket; no requirement to cut threaded rod to multiple different lengths

Versatile – enables pipes of different sizes to be installed along the centre axis and condensate pipes to be installed at a gradient for drainage. A variety of rubber pads also provide insulation against vibration (noise reduction up to 23 db)

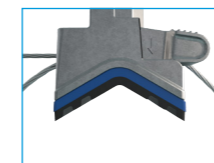
Universal – replaces more than 13 different pipe ring sizes

Practical – easy site storage, reduces waste

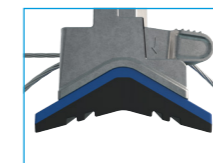
Ready-to-use – supplied as a kit, with 100 mm length of rod, M8 nut and Gripple Universal Clamp



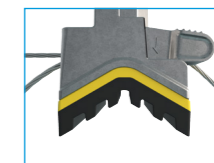
Pad Variants



Standard
Rubber pad for insulation purposes
14 dBa reduction.



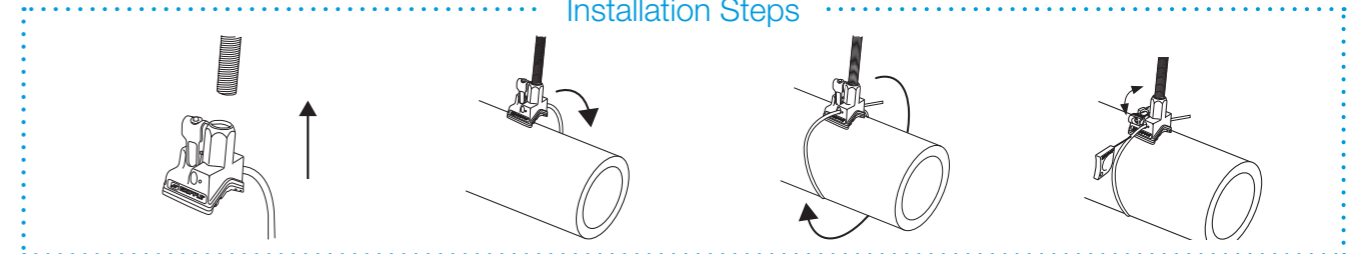
Large
Improved fit for large diameter pipe or spiral duct
18 dBa reduction.



Acoustic
Designed to reduce noise related to water pressure
23 dBa reduction

Clamps are supplied individually or as part of a bespoke bracket system to suit your application.

Installation Steps



Contact Gripple for full product information, submittal data and technical support.

UniGrip

The next generation of wire rope suspension products designed for the fast suspension of cable containment, pipework, ductwork, HVAC systems and modules including multi-tier installations.

Quick – up to 6 times faster than traditional suspension systems

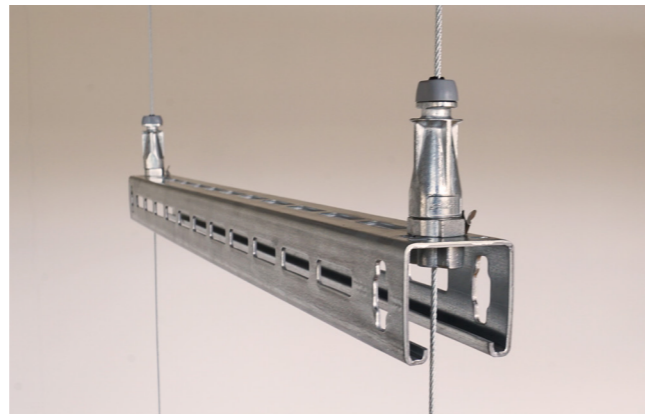
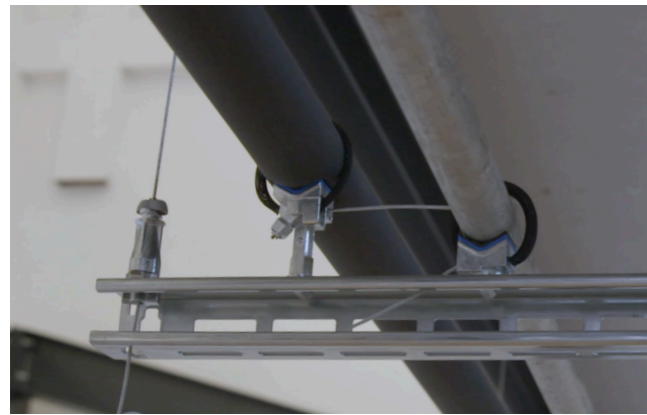
Safe – can be pre-installed to channel using pre-fitted washer/nut or using retention clip reducing time working at height

Easy – integral ergonomically designed release button allows for simple adjustment




Secure – button acts as a locking screw and indicator clearly highlights the wire is locked in position for ultimate security

Versatile – variety of foot attachments available to suit applications

Strong – highest load rating capability to date, up to 250 kg SWL with a 5:1 safety factor

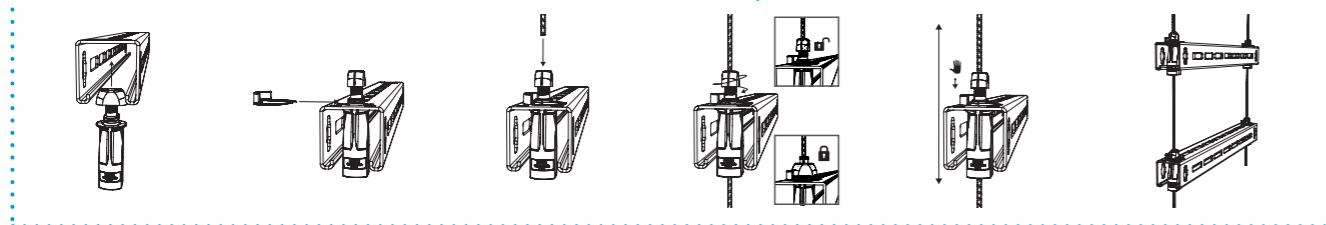


Available Sizes and Load Ratings

	No. 2 55 kg SWL (5:1)		No. 3 110 kg SWL (5:1)		No. 4 250 kg SWL (5:1)
---	------------------------------------	---	-------------------------------------	---	-------------------------------------

All hangers are supplied as ready-to-use kits with a length of wire rope and end fixing of your choice.











Installation Steps



Contact Gripple for full product information, submittal data and technical support.

UniGrip Feet

UniGrip is available with a range of 'feet' options, making it an ideal solution for all building services applications. Consolidating the number of products used to install services on-site will simplify the entire installation process and offer consistency across the project.

	Standard <ul style="list-style-type: none"> Designed for non mechanical fixing through brackets Supplied with retention clip for pre-fabrication applications Central wire exit 		QT <ul style="list-style-type: none"> Designed for use with Gripple Universal Brackets Quarter turn installation, no mechanical fix required Safety clip for added security Central wire exit 		Calibra <ul style="list-style-type: none"> Designed for adjustment of building services under load 35 mm of finite adjustment using integral adjustment pillar and M8 thread Side wire exit
	Hook <ul style="list-style-type: none"> Self closing latch for security Designed for heating/cooling panels and light fittings Side wire exit 		Y-Fit <ul style="list-style-type: none"> Designed for lighting or containment Dual fixing points for balance 150 mm, 300 mm and 500 mm leg lengths as standard Legs available with a variety of wire end fixings eg. Toggle, Snap Hook etc. Side wire exit 		Side Exit <ul style="list-style-type: none"> Designed for applications in which wire cannot exit centrally (avoiding clashes with services) Supplied with a hex nut Side wire exit Both M6 & M8 Variants Available
	Phenolic Adaptor <ul style="list-style-type: none"> Ideal for phenolic & PIR fabricated ductwork Fast, tool free insertion with less time at height Push-fit directly into the underside of the duct 15 kg SWL per bracket at 5:1 safety factor 		Central Exit with square washer & channel nut <ul style="list-style-type: none"> Designed for services suspended with channel Supplied with a channel nut Male thread for mechanical fixing M8 (UniGrip No.2) M10 (UniGrip No.3) M12 (UniGrip No.4) Central wire exit 		Central Exit with hex nut <ul style="list-style-type: none"> Designed for services suspended with channel Supplied with a hex nut Male thread for mechanical fixing M8 (UniGrip No.2) M10 (UniGrip No.3) M12 (UniGrip No.4) Central wire exit
	QTUB <ul style="list-style-type: none"> Designed for use with Gripple Universal Bracket suspension slot Quarter turn installation, no mechanical fix required Safety clip for added security Central wire exit 				

Fast Trak® - Standard



Pre-fabricated trapeze bracket solution offering speed, flexibility and efficient use of space, for the installation of electrical containment, pipework, ductwork and other mechanical services in restricted places.

Fire Rated – tested to F120 in accordance with BS EN 1363-1:2020 temperature curve*

Quick – up to six times faster to install than traditional suspension systems

Safe – pre-fabricated system which removes the need to cut threaded rod or channel on-site

Tool free adjustment – bracket can be moved up and down the tracks to accommodate changes in position during installation

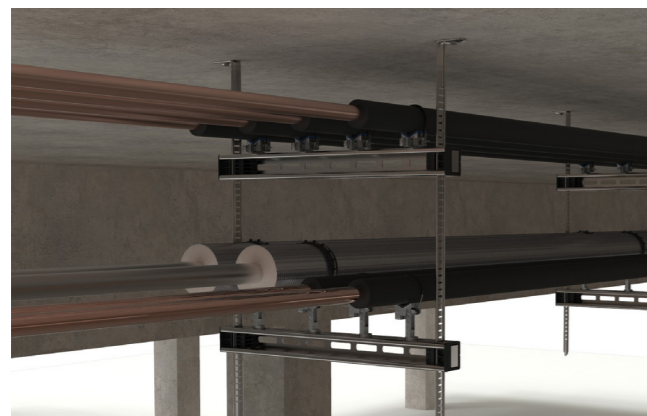
Zero waste – tracks bend neatly under bracket

Versatile – four-sided bracket provides suspension point on every face

Easy measurement – indicators for marking fixing points on the ceiling; M4 level markers on the tracks highlight 50 mm increments, no leveling tools required

Neat & tidy – system can be 'stacked' on-site to reduce storage requirements

Space saver – can be multi-tiered to accommodate additional services



Available Bracket Sizes



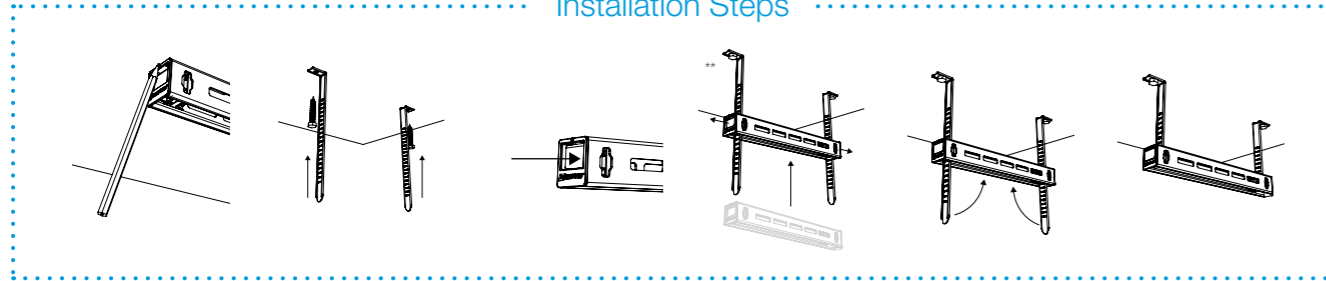
System Rating Up to 200 kg¹ SWL (3:1)
Bracket Sizes 170 mm - 1470 mm
 Bracket sizes increase in 100 mm increments

Available Track Sizes



Track Sizes 200 mm - 1500 mm
 Track sizes increase in 100 mm increments

Installation Steps



*Fire Fastener needed when used channel-side up ('u' orientation). **When installed correctly, button must be fully retracted and flush with the cartridge edge. Do not adjust under load. Contact Gripple for full product information, submittal data and technical support. ¹Tested at ambient temperatures, see bracket data on page 26 for maximum working load. Excess tracks can also be snapped off once bracket is levelled & secured for a neater finish. Bending tracks by hand is not recommended when excess is under 100 mm.

Fast Trak® - Low Profile



A space efficient low profile pre-fabricated trapeze bracket. Ideal for use with electrical containment, pipework and mechanical services in ultra-restricted ceiling spaces.

Fire Rated – tested to F120 in accordance with BS EN 1363-1:2020 temperature curve

Space saver – 21 mm bracket depth is even lower profile than standard Fast Trak range

Quick – up to six times faster to install than traditional suspension systems

Safe – pre-fabricated system which removes the need to cut threaded rod or channel on-site

Tool free – bracket can be moved up and down the tracks to accommodate changes in position during installation

Easy measurement – indicators at each end of the bracket can be used as a measurement guide when marking fix points in the ceiling

Neat & tidy – system can be 'stacked' on-site to reduce storage requirements

Aesthetic – tracks bend neatly under bracket



Available Bracket Sizes



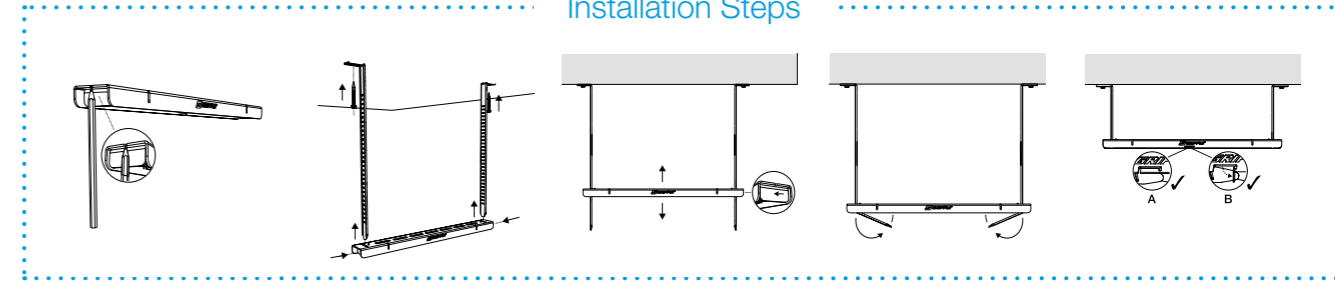
System Rating 30 - 195 kg¹ SWL (3:1)*
Bracket Sizes 190 mm - 1490 mm
 Bracket sizes increase in 100 mm increments

Available Track Sizes



Track Sizes 200 mm - 1500 mm
 Track sizes increase in 100 mm increments

Installation Steps



*Safe working load dependant on bracket size. Please contact Technical Services for more information. Do not adjust under load. Contact Gripple for full product information, submittal data and technical support. ¹Tested at ambient temperatures, see bracket data on page 26 for maximum working load. Excess tracks can also be snapped off once bracket is levelled & secured for a neater finish. Bending tracks by hand is not recommended when excess is under 100 mm.

Fast Trak® - Side Loading



Pre-fabricated side loading bracket solution offering speed and flexibility for the installation of lightweight electrical containment, pipework, ductwork and other mechanical services in restricted places.

- Fire Rated** – tested to F120 in accordance with BS EN 1363-1:2020 temperature curve
- Quick** – up to six times faster to install than traditional suspension systems
- Safe** – pre-fabricated system which removes the need to cut threaded rod or channel on-site
- Tool free** – bracket can be moved up and down the tracks to accommodate changes in position during installation
- Secure** – safety locks ensure security once brackets and tracks are in place
- Space saver** – can be multi-tiered to accommodate additional services
- Easy installation** – lightweight services can be side loaded onto the bracket
- Neat & tidy** – system can be 'stacked' on-site to reduce storage requirements



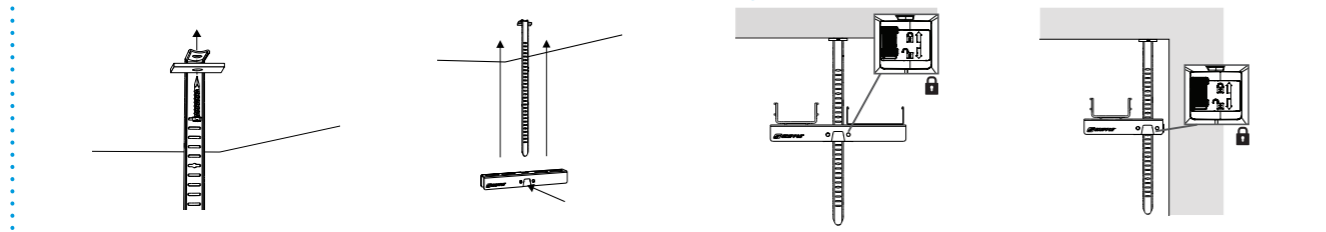
Available Bracket Sizes

Single Load ¹ FTBS-180 – 15 kg 3:1 SWL	Twin Load ¹ FTBT-200 – 30 kg 3:1 SWL FTBT-300 – 30 kg 3:1 SWL FTBT-400 – 30 kg 3:1 SWL

Available Track Sizes

Track Sizes 200 mm - 600 mm
Track sizes increase in 100 mm increments

Installation Steps

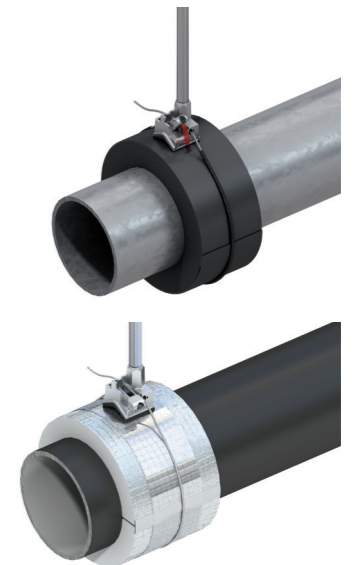


Do not adjust under load. ¹Tested at ambient temperatures, contact Gripple for full product information, submittal data and technical support. Excess tracks can also be snapped off once bracket is levelled & secured for a neater finish. Bending tracks by hand is not recommended when excess is under 100 mm.

Pipe Insulation Collars

Kooltherm® and Armaflex® pipe collars provide rapid installation and ensure insulation continuity without thermal breaks.

- Compatible** – designed specifically for use with Gripple pipe clamps
- Universal** – suitable for mild steel, stainless steel, copper and plastic pipes in a range of sizes
- High performance** – reduced heat loss & highly moisture resistant
- Temperature range:**
Kooltherm -50°C to 120°C. Armaflex -183°C to 105°C
- Thermal conductivity:**
Kooltherm 0.021 W/m·K at 10°C. Armaflex 0.036 W/m·K at 10°C



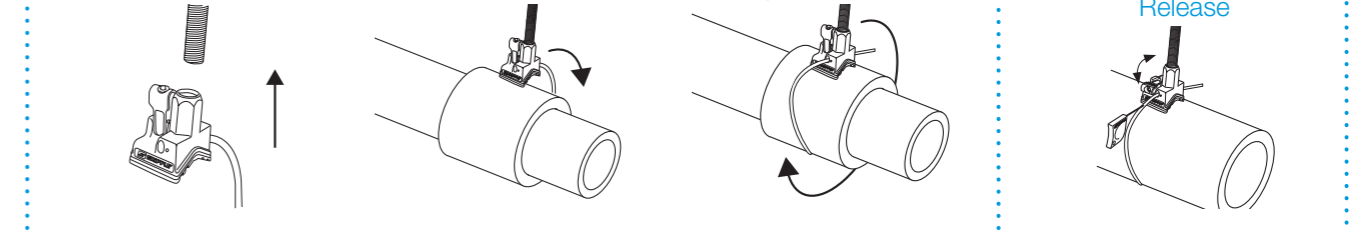
Thermal Efficiency

Kooltherm® -50°C to +120°C	Armaflex® -183°C to +105°C
--------------------------------------	--------------------------------------

Thermal Conductivity

Kooltherm® 0.021 W/m·K at 10°C	Armaflex® 0.036 W/m·K at 10°C
--	---

Installation Steps



Contact Gripple for full product information, submittal data and technical support.

Standard Hanger

A versatile suspension kit for a variety of applications including the suspension of pipework, HVAC and electrical containment from different substrates.

Quick – fewer components compared to traditional methods, up to six times faster to install than traditional suspension systems

Safe – no tools or 'hot works' permit required for installation, improving health and safety on-site

Strong – industry approved, conforms to DW/144






Lightweight – easy to move and handle on-site, whilst reducing the load on the building structure

Aesthetic – the design complements enclosed and open soffit spaces

🔥 Fire Rated Hanger version available. Contact Gripple Technical Services for more information.

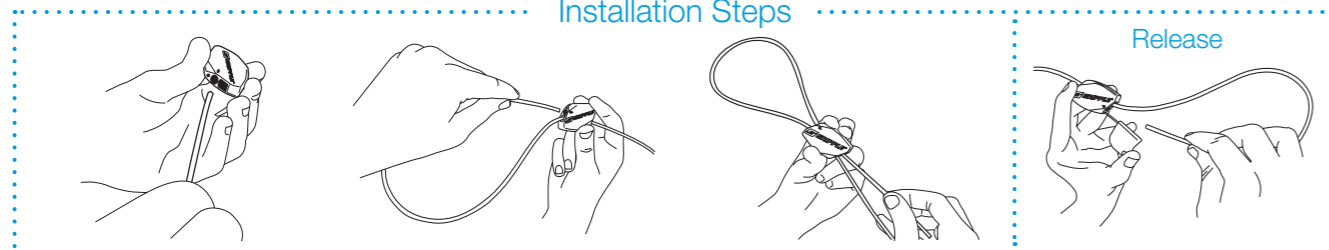


Available Sizes and Load Ratings

	No. 1 10 kg SWL (5:1)		No. 2 45 kg SWL (5:1)		No. 3 90 kg SWL (5:1)		No. 4 225 kg SWL (5:1)		No. 5 325 kg SWL (5:1)
---	------------------------------------	---	------------------------------------	---	------------------------------------	---	-------------------------------------	---	-------------------------------------

All hangers are supplied as ready-to-use kits with a length of wire rope and end fixing of your choice.

Installation Steps



Do not adjust under load. Contact Gripple for full product information, submittal data and technical support.

Express

Tool free suspension kit designed with a keyless release mechanism for fast suspension of a variety of applications from different substrates including M&E, lighting, signage and acoustics.

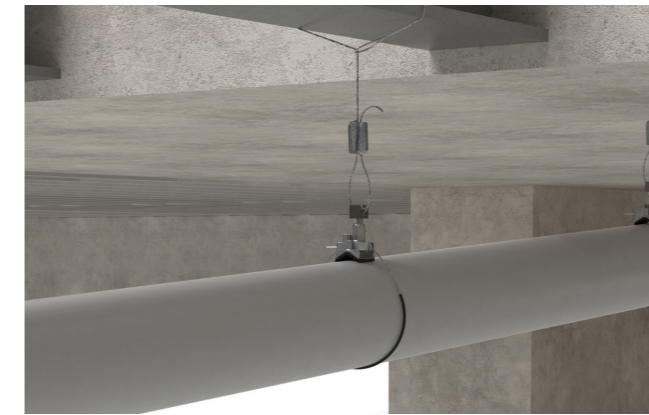
Versatile – Express No. 1 is ideal for signage, shop fitting, lighting and other lightweight fixtures. Express No. 2 is ideal for mechanical and non fire-rated electrical applications

Quick – ergonomic buttons allow for rapid adjustment, no Setting Key required



Safe – no tools or 'hot works' permit required for installation, improving health and safety on-site

Aesthetic – the design complements enclosed and open soffit spaces

Lightweight – easy to move and handle on-site, whilst reducing the load on the building structure

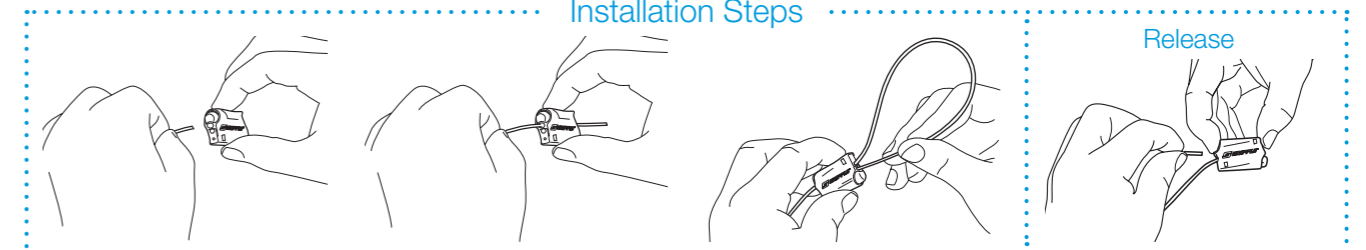


Available Sizes and Load Ratings

	No. 1 15 kg SWL (5:1)		No. 2 45 kg SWL (5:1)
---	------------------------------------	---	------------------------------------

All hangers are supplied as ready-to-use kits with a length of wire rope and end fixing of your choice.

Installation Steps



Do not adjust under load. Contact Gripple for full product information, submittal data and technical support.

Universal Bracket Beam Clamp

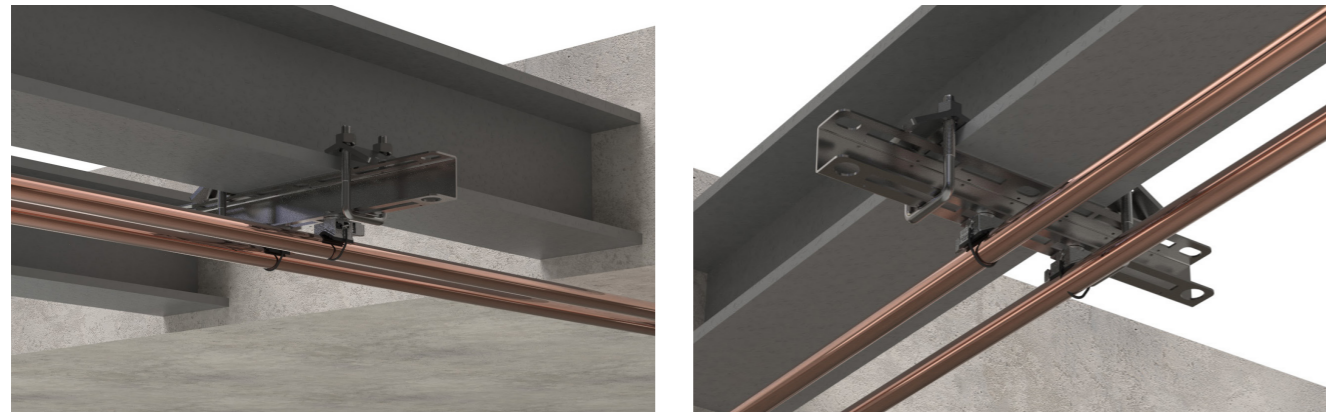
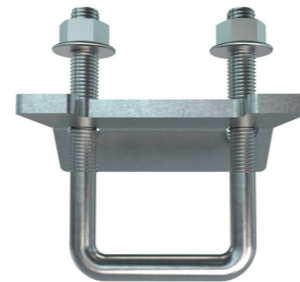
Designed for use with Gripple Universal Brackets for fixing directly to steel I-Beams.

Quick – allows for the fast installation and securing of mechanical and plumbing pipes in an indoor, stationary setting.


Versatile – ideal for use with Gripple Universal Brackets & QT Universal Clamps for easy installation of pipework close to structural steel members.

Flexible – suitable for use on flange thicknesses up to 40 mm.

Load Rating – please refer to Universal Bracket load ratings (page 5).

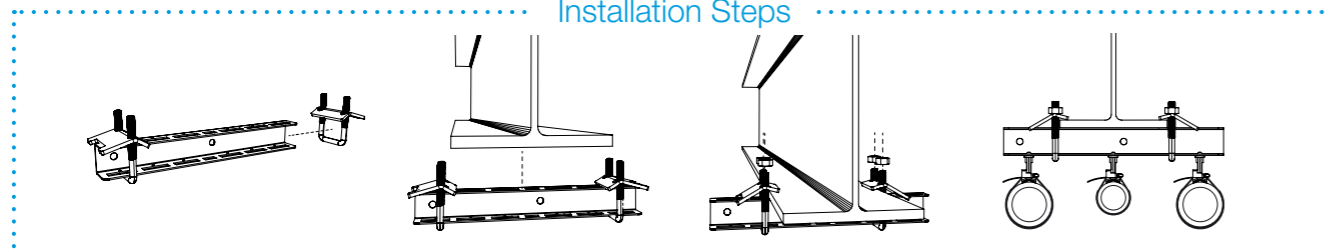


Available Sizes and Load Ratings

 <p>Allows bracket to be fixed directly to beams for pipe runs close to the deck.</p>	<p>PB-BEAM-CLAMP</p> <p>For use with Universal Bracket (e.g. UB-170)</p>
--	---

Compatible with all Gripple Universal Brackets. Universal Bracket sold separately.

Installation Steps



Contact Gripple for full product information, submittal data and technical support. *Universal Bracket sold separately.

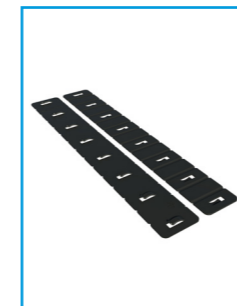
Accessories



Gripple Universal Clamp Adaptors - M8

- Thread quickly and easily into Gripple Universal Clamp
- Can be supplied assembled to Gripple Universal Clamp or separately
- Provides an anchor point for wire rope suspension of single pipe runs (resistance of hazardous substances)

Material: Mild steel (zinc plated)



Spreader Band

- Used in conjunction with Gripple Universal Clamps
- Ideal for use with low density insulation to spread the weight of pipe over a wider surface area

Material: Polypropylene

Approvals:

- UL2043 certified: classification related to heat release and smoke optical density



QT Accessory

- Make height adjustments to suit exact requirements
- Simple quarter turn attachment to bracket; no requirement to cut threaded rod to multiple different lengths

Material: EZAK Alloy

Approvals:

- Lloyds certified, TUV tested, APAVE tested



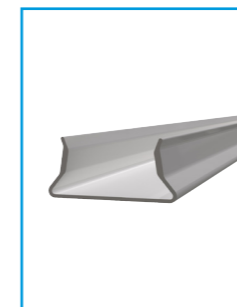
J Hook 🔥

- For use with Fast Trak tracks to support single pipe runs
- Ideal where condensate pipe needs to be installed at a gradient

Material: Wire Form - Steel-HS3 Wire Plastic Clip - Polypropylene

Approvals:

- UL Certified



Bracket Cover

- Neatly hides tracks to further enhance the aesthetics of the Fast Trak system
- Simple snap-fit installation, can be cut down to specific lengths
- Covers edges that would usually protrude below the bracket

Material: UPVC

Pipework Kit Codes

How to build your unique product code:

1 CHOOSE YOUR UNIVERSAL OR LOW PROFILE BRACKET

Universal Bracket

235 mm UB-170	335 mm UB-270	435 mm UB-370	535 mm UB-470
635 mm UB-570	735 mm UB-670	835 mm UB-770	935 mm UB-870
1035 mm UB-970	1135 mm UB-1070	1235 mm UB-1170	1335 mm UB-1270
1435 mm UB-1370	1535 mm UB-1470		

Low Profile Bracket

250 mm LPB-250	350 mm LPB-350	450 mm LPB-450	550 mm LPB-550
650 mm LPB-650	750 mm LPB-750	850 mm LPB-850	950 mm LPB-950
1050 mm LPB-1050	1150 mm LPB-1150	1250 mm LPB-1250	1350 mm LPB-1350
1450 mm LPB-1450	1550 mm LPB-1550		

2 CHOOSE YOUR CLAMP QUANTITY

2 3 4 5 6 7 8

3 CHOOSE YOUR TYPE OF CLAMP

QT Universal Clamp T, QT Compact Clamp C, Universal Clamp INS-M8-M10, Height Adjustable Universal Clamp HA100, Standard -, Large L, Acoustic A

4 CHOOSE YOUR FOOT VARIANT

Enter your unique product code (e.g. PB440-4GC2-T-400-L):

-
G
C
2
-

-
4
0
0
-

BRACKET CLAMP QUANTITY TYPE OF CLAMP WIRE LENGTH (MM)* FOOT VARIANT

*600 mm wire length also available on request

Fast Trak Product Codes

1 CHOOSE YOUR BRACKET LENGTH*

Fast Trak Bracket

235 mm FTB-170	335 mm FTB-270	435 mm FTB-370
535 mm FTB-470	635 mm FTB-570	735 mm FTB-670
835 mm FTB-770	935 mm FTB-870	1035 mm FTB-970
1135 mm FTB-1070	1235 mm FTB-1170	1335 mm FTB-1270
1435 mm FTB-1370	1535 mm FTB-1470	

Fast Trak Low Profile Bracket

235 mm FTBL-190	335 mm FTBL-290	435 mm FTBL-390
535 mm FTBL-490	635 mm FTBL-590	735 mm FTBL-690
835 mm FTBL-790	935 mm FTBL-890	1035 mm FTBL-990
1135 mm FTBL-1090	1235 mm FTBL-1190	1335 mm FTBL-1290
1435 mm FTBL-1390	1535 mm FTBL-1490	

Fast Trak Side Loading

180 mm FTBS-180	210 mm FTBT-200	290 mm FTBT-300
400 mm FTBT-400		

Fast Trak Segregated

607 mm FTBSG-130	827 mm FTBSG-240	1047 mm FTBSG-350
---------------------	---------------------	----------------------

2 CHOOSE YOUR TRACK LENGTH

Fast Trak Track

200 mm FTT-200	300 mm FTT-300	400 mm FTT-400	500 mm FTT-500	600 mm FTT-600	700 mm FTT-700	800 mm FTT-800
900 mm FTT-900	1000 mm FTT-1000	1100 mm FTT-1100	1200 mm FTT-1200	1300 mm FTT-1300	1400 mm FTT-1400	1500 mm FTT-1500

Pipe Insulation Collar Codes

1 CHOOSE YOUR INSULATION

Kooltherm® GKT-PS, Armaflex® GAF-PS

15	21	22	27	28	34	35
42	54	60	67	76	89	

2 CHOOSE YOUR OUTSIDE PIPE DIA.(OD MM)

3 CHOOSE YOUR INSULATION THICKNESS (MM)

KOOLTHERM® 15 20 25 30 40 50
 ARMAFLEX® 19 25 32

Hanger Kit Codes

1 CHOOSE YOUR PRODUCT

Standard Hanger No. 2 HF2	Standard Hanger No. 3 HF3	Standard Hanger No. 4 HF4	Standard Hanger No. 5 HF5	Express No. 2 XP2	UniGrip QT No. 2 - UG2-QT	M6 Stud UG2-6S30N ¹ UG2-6S30 M8 Stud UG2-8S25N ¹ UG2-8S25	M6 Stud UG3-6S30N ¹ UG3-6S30 M8 Stud UG3-8S25N ¹ UG3-8S25	M12 Stud UG4-12S30 UG4-12S30N
UniGrip Central Exit CN ² No.2 UG2-CN No.3 UG3-CN No.4 UG4-CN	UniGrip Central Exit FN ¹ No.2 UG2-FN No.3 UG3-FN No.4 UG4-FN	UniGrip Calibra UG2-CAL	UniGrip Y-Fit No. 2 - UG2-Y No. 3 - UG3-Y	UniGrip Cable Basket Adaptor UG2-CBA	UniGrip Standard No. 2 - UG2 No. 3 - UG3			

¹ With Flange Nut, ² With Channel Nut

2 CHOOSE YOUR END FIXING

Loop LG	Stud M8 x 45 mm S8G	Snap Hook HG	Decking Wedge (25 mm) DW258G	Channel Nut CN	Eyelet EY6G	45° Eyelet EY4512G	90° Eyelet EY906G	Barrel B6G
C-Clip 3 mm CC3	C-Clip 6 mm CC6	Cladding Hook CHG	25 mm Wedge DW258G	Alphawedge DA8G	Multiwedge 2 DM28G	TR60 Wedge DTR8G	MF Wedge DMF8G	Toggle TG

Full range of End Fixings available on request

3 CHOOSE YOUR WIRE LENGTH

1M	2M	3M	4M	5M	10M
----	----	----	----	----	-----

Enter your unique product code (e.g. XP2-LG-4M):

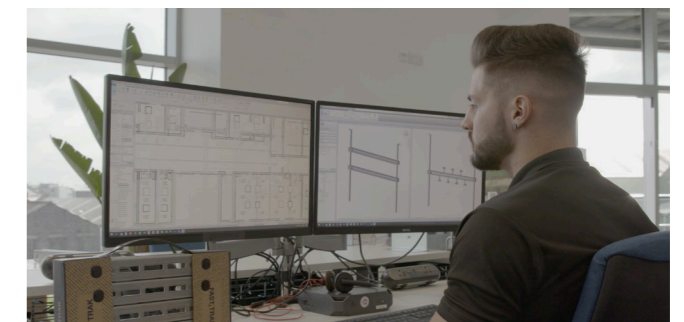
<input type="text"/>	<input type="text"/>	<input type="text"/>	<input type="text"/>	<input type="text"/>	<input type="text"/>	<input type="text"/>	-	<input type="text"/>	<input type="text"/>	<input type="text"/>	<input type="text"/>	<input type="text"/>	<input type="text"/>	<input type="text"/>	-	<input type="text"/>	<input type="text"/>	<input type="text"/>	*	
PRODUCT								END FIXING							WIRE LENGTH (MM)					

Stud available in M6, M8 or M10. Barrel available in M6 or M8. Please substitute the () for the size required when ordering, e.g. -S6G for an M6 Stud.

About Gripple Technical Services

Gripple Technical Services is a dedicated team of qualified Engineering Physicists and Mechanical Engineers that, in addition to our Piping Installation Design service, offer CIBSE certified CPD presentations and a range of other services including;

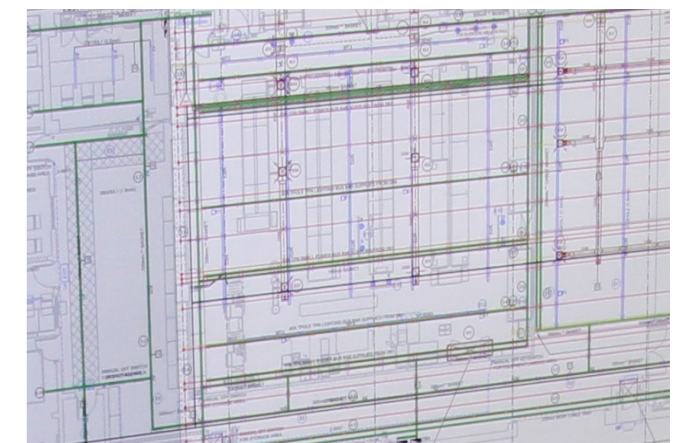
- Suspension System Installation Design
- BIM solutions & resources
- Environmental impact studies
- CAD drawings
- On site visits for technical solution support
- Product training
- Continuous support through to project completion



Suspension System Installation Design

Gripple Technical Services offer a full, complementary piping suspension system design service. The simple five step process results in a fully specified project layout;

1. Contractor/engineer submits Revit model or project drawings in dwg or pdf format to Gripple Technical Services.
2. Gripple Technical Services annotate drawings or populate model with exact requirements (bracket lengths and configurations, hanger types etc.)
3. Contractor/engineer receives fully annotated model or drawings and full quote is provided
4. Once order is placed, product is packaged to specific project requirements (e.g. Floor Three, Zone One, F&R)
5. Product is dispatched to job site and installed quickly and easily by contractor.

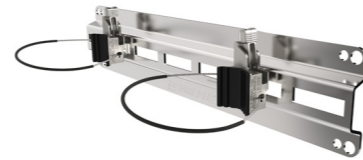


Wall Mounted Applications

In combination with weight bearing riser clamps, the Gripple Pipe Bracket System can be used for intermediate supports for riser pipe, stub-up, and drop applications.

- Ideal for supporting mechanical, waste, soil, plumbing and gas pipe
- Brackets and clamps are directly fixed to the wall
- Can accommodate insulated and non-insulated pipe
- If used for load bearing application, max. load per clamp is 22.5 kg
- For lateral support load rating restrictions do not apply

Low Profile Bracket with QT Compact Clamp



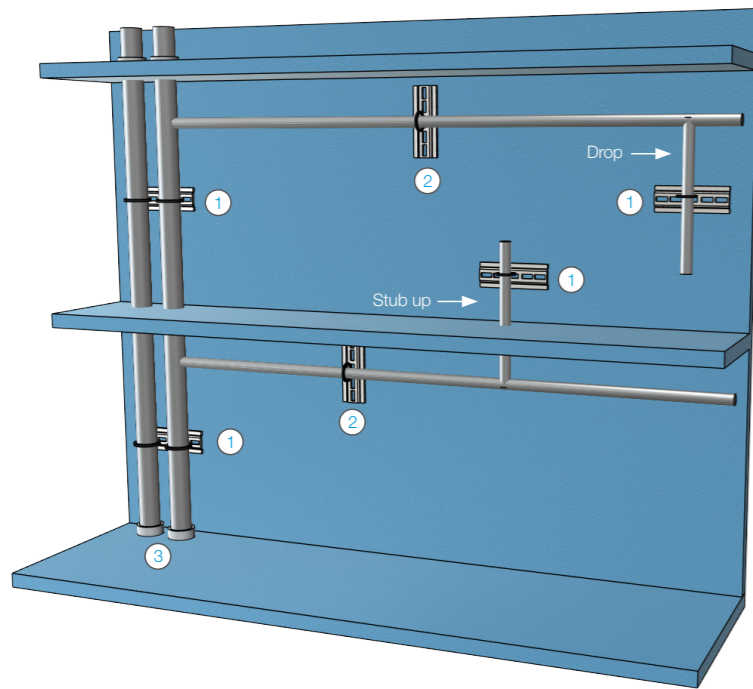
Important information

1. The information and recommendations given herein are believed to be correct at time of writing. The data has been obtained from tests done under laboratory, or other controlled conditions and it is the users responsibility to use the data given in light of conditions on site, taking account of the intended use of the products concerned.

2. Whilst Gripple Ltd can give general guidance and advice, the nature of Gripple products means that the ultimate responsibility for selecting the correct product for a particular application must lie with the customer.

3. All products must be used, handled and applied in accordance with current product instructions and manufacturers recommendations for use, published by Gripple Ltd.

Typical Application



- ① Lateral Stability Support (Gripple)
- ② Wall Mounted Horizontal Hanger (Gripple)
- ③ Load Bearing Riser Clamp (not supplied by Gripple)

Technical Data & Installation Recommendations

Recommended minimum support spacing for steel and copper pipes.

Copper Pipes

Copper tube	Tube size	OD	Weight empty	Weight filled	Max. spacing for horizontal runs	Weight per Gripple Clamp*
BS EN 1057	mm	mm	kg/m	kg/m	m	kg
	15	15	0.28	0.43	1.2	0.51
	22	22	0.53	0.85	1.8	1.53
	28	28	0.68	1.22	1.8	2.19
	35	35	1.13	1.96	2.4	4.72
	42	42	1.37	2.60	2.4	6.24
	54	54	1.77	3.86	2.7	10.43
	67	67	2.74	5.96	3.0	17.87
	76	76	3.12	7.31	3.0	21.92
	108.1	108	4.45	13.126	2	26.25
	133.4	133	5.47	18.825	1.8	33.89
155.4	159	8.71	27.677	1.5	41.52	

Mass calculated at standard pressure with water at 4°C.
*At max. bracket spacing

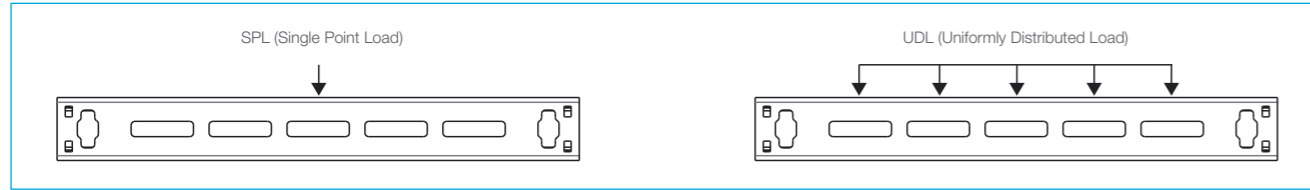
Steel Pipes

Steel pipe	Tube size	OD	Weight empty	Weight filled	Max. spacing for horizontal runs	Weight per Gripple Clamp*
BS 1387	inches	mm	kg/m	kg/m	m	kg
	1/2	21	1.22	1.39	2.0	2.77
	3/4	27	1.58	1.91	2.4	4.59
	1	34	2.44	2.97	2.7	8.02
	1 1/4	42	3.14	4.05	2.7	10.93
	1 1/2	48	3.61	4.87	3.0	14.60
	2	60	5.10	7.14	3.4	24.29
	2 1/2	76	6.51	10.04	3.7	37.13
	3	89	8.47	13.37	3.2	42.79
	3 1/2	102	10.3	16.66	2.4	39.99
	4	114	12.1	19.95	1.8	35.92
	5	140	16.2	28.47	1.5	42.71
	6	168	19.2	36.87	1.2	44.25

Mass calculated at standard pressure with water at 4°C.
*At max. bracket spacing

Fast Trak Bracket Data

Maximum Working Load*



Fast Trak - Standard (kg/kN)

FTB-270 to FTB-1370

Bracket Orientation**	'n' orientation		'c' orientation	
	kg	kN	kg	kN
Single Point Load (SPL) @ 3:1	100 kg	0.98 kN	70 kg	0.68 kN
Uniformly Distributed Load (UDL) @ 3:1	200 kg	1.96 kN	130 kg	1.27 kN

FTB-1470

Single Point Load (SPL) @ 3:1	100 kg	0.98 kN	70 kg	0.68 kN
Uniformly Distributed Load (UDL) @ 3:1	175 kg	1.71 kN	130 kg	1.27 kN

Fast Trak - Low Profile (kg)

Bracket	FTBL 190	FTBL 290	FTBL 390	FTBL 490	FTBL 590	FTBL 690	FTBL 990	FTBL 890	FTBL 990	FTBL 1090	FTBL 1190	FTBL 1290	FTBL 1390	FTBL 1490
UDL (Uniformly Distributed Load)	230	160	130	110	100	90	70	70	55	55	50	40	40	35
SPL (Single Point Load)	175	115	75	70	60	50	40	40	30	30	25	20	20	20

Fast Trak - Low Profile (kN)

Bracket	FTBL 190	FTBL 290	FTBL 390	FTBL 490	FTBL 590	FTBL 690	FTBL 990	FTBL 890	FTBL 990	FTBL 1090	FTBL 1190	FTBL 1290	FTBL 1390	FTBL 1490
UDL (Uniformly Distributed Load)	2.26	1.57	1.27	1.08	0.98	0.88	0.69	0.69	0.54	0.54	0.49	0.39	0.39	0.34
SPL (Single Point Load)	1.72	1.13	0.74	0.69	0.59	0.49	0.39	0.39	0.29	0.29	0.25	0.20	0.20	0.20

*For more details on specified loads or additional deflection ratings please contact Gripple Technical Services. When loading multiple faces the total load applied must not exceed the values stated.

**Can also be installed in a 'u' orientation but a Fire Fastener must be used to retain fire rating. Contact Gripple Technical Services for more information on this application.

Key Recommendations

Failure to comply with these recommendations may result in product malfunction and possible damage to property or person and will invalidate the Gripple guarantee. Gripple products are guaranteed to be free from defects in materials and workmanship in accordance with our terms and conditions. No other warranty, whether express or implied, including any warranty of merchantability or fitness for purpose shall exist in connection with the sale or use of any Gripple product.

Full technical information and installation instructions should be obtained directly from Gripple Limited, Gripple Europe, Gripple Inc., Gripple Japan, Gripple Poland, Gripple India, Gripple Germany, any regional Gripple office, or via the website (www.gripple.com). These Key Recommendations may be amended from time to time; please view the Key Recommendations page on the Gripple website (www.gripple.com) for the most up-to-date information.

Please adhere to the following usage recommendations:

- 
Loads
 Always operate the product within its stated safe working load range. Suspend static loads only. Do not subject to shock loading. Do not adjust under load.
- 
Hanging at an angle to vertical
 Ensure that the load calculation considers the effect of 'side load'. For example, at an angle of 60° to vertical the SWL is effectively reduced by 50%.
- 
Ducting: When installing included angle teardrop hangers on round/spiral ducting or pipes, the final included angle of the assembly should not exceed 60°.
- 
Y-Fit: Legs on Y-Fit not to be installed greater than 60°.
- 
Environment
 Do not use in chlorinated or chemically corrosive atmospheres. Standard hangers are for use in dry and air conditioned environments only. Stainless steel hangers should be considered for high to saturated humid environments after validation by a competent person.
- 
 Not suitable for swimming pools.
- 
Joining
 Never join two ends together in-line.
- 
Traceability
 Always use the Gripple hanger with the specified wire rope supplied by Gripple. Gripple products should only be used with products supplied by Gripple Ltd., and the warranty will not apply if our products are used with any products supplied by third parties.
- 
Lifting
 Do not use for lifting, either by crane or as part of a pulley system.
- 
Impact
 If there is potential for impact on the wire rope suspension or suspended services, seek advice from Gripple Ltd. Technical Services prior to installation.
- 
Lubrication
 Do not apply oil or any other lubricant to the hanger or any other part of the assembly.
- 
Wire Rope
 Trim any damaged filaments with the wire cutter before use.
- 
Installation
 Do not walk or stand on the Gripple product installation. Gripple products must not be used for personal suspension, fall protection or harnessing people.
- 
Painting
 Do not paint the hanger prior to installation. Ensure the hanger is in its final position prior to applying any paint to the wire rope assembly. Do not move the fastener after painting.
- 
Storing
 Do not store the product outdoors, or in damp or abnormal conditions.
- 
Repair, Modification and Re-use
 Do not repair, modify or re-use Gripple products. If you have any queries regarding product performance, please contact technical.services@gripple.com

Quality & Approvals

Gripple UK is ISO 9001:2015 and ISO 14001 certified. Gripple products meet the highest standards of quality with lowest environmental impact.



Gripple's policy is one of continuous development and innovation. We therefore reserve the right to alter specifications, etc. without notice.

www.gripple.com

info@gripple.com

Gripple Ltd (Headquarters)

The Old West Gun Works
Savile Street East
Sheffield S4 7UQ
UK

T | +44 (0) 800 018 4264

F | +44 (0) 114 275 1155

E | info@gripple.com

Gripple Europe SARL

1, rue du Commerce
BP 37
67211 Obernai Cedex
France

T | +33 (0)3 88 95 44 95

F | +33 (0)3 88 95 08 78

E | frinfo@gripple.com

Gripple Inc

1611 Emily Lane
Aurora
IL 60502
USA

T | +1 866 474 7753

F | +1 800 654 0689

E | grippleinc@gripple.com

Gripple India

C-115, Industrial Area
Phase I, Naraina
New Delhi-110028
India

T | +91-11-45136817

F | +91-11-45136817

E | ininfo@gripple.com

Gripple Canada Inc

6665 Tomken Road
Units 9-10
Mississauga, ON L5T 2C4
Canada

T | +1 905 458 8700

E | cainfo@gripple.com

Gripple Japan K.K

2-57 Tsukizi-cho
Hyogo-ku, Kobe-shi
Hyogo, 652-0845
Japan

T | +81 (0) 78 681 2121

F | +81 (0) 78 681 2122

E | japan@gripple.com



A GLIDE company



BROC-PIPE-ENG

Published February 2022

Please refer to www.gripple.com for the most up to date user advice and product information.



© 2022 Gripple.

Gripple is a registered trademark of Gripple Limited.
Company registered in England No. 1772901, VAT Reg No. GB 600 1951 88