

TM65 Mid-Level Calculation

FTB-370

Site name	Norfolk Bridge Works
Site address	11 Leveson Street, Sheffield, S4 7ER
Products per year	54,817

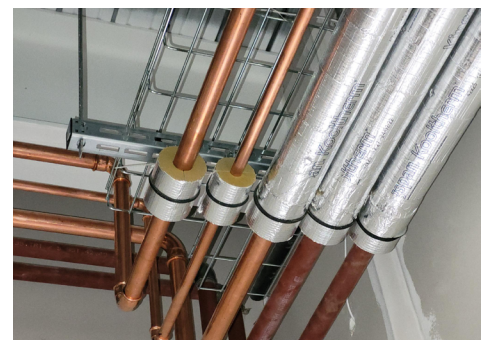


Assessment date	01/06/2022
Assessor	Tasha Lyth
Organisation	Gripple Ltd
Contact	sustainability@gripple.com

Embodied carbon result with 'mid-level TM65 calculation' method total:

3.994 (kg CO₂e)*

Type of product	MEP supports and bracketry
Capacity of equipment (M)	0.37 m
Product weight (kg)	0.82 kg
Material breakdown for at least 95% of the product weight (Y/N)	Y
Service life of the product (years)	25**
Types of refrigerant	N/A
Refrigerant GWP	0.00 kg
Energy consumption of the factory per unit of product (kWh)	0.31 kWh: Electricity, natural gas
Location of manufacture	Sheffield, UK
Product complexity	Category 1: See CIBSE TM65 table 4.3



*Figure reached using 'Mid-Level' TM65 calculator

**Product service life when installed in accordance with Gripple key recommendations, 25 year extended product warranty available at Technical Services discretion.

TM65 Mid-Level Calculation

FTB-370



Embodied carbon result with 'mid-level TM65 calculation' method total:

3.994 (kg CO₂e)*

Embodied carbon results breakdown (kg CO₂e)

A1: Material extraction	2.461 kg CO ₂ e	TM65 assumption
A2: Transport	0.162 kg CO ₂ e	TM65 assumption
A3: Manufacturing	0.075 kg CO ₂ e	
A4: Transport to site	0.032 kg CO ₂ e	TM65 assumption
B1: Use	0.000 kg CO ₂ e	TM65 leakage type 0
B3: Repair	0.225 kg CO ₂ e	TM65 assumption
C1: Deconstruction	0.000 kg CO ₂ e	TM65 leakage type 0
C2: Transport	0.011 kg CO ₂ e	
C3: Waste processing	0.075 kg CO ₂ e	
C4: Disposal	0.001 kg CO ₂ e	TM65 assumption

Embodied carbon results - without refrigerant leakage (kg CO₂e)

A1-C4 (excluding B1,C1)	3.072 kg CO ₂ e
A1-C4 with Buffer Factor (excluding B1, C1)	3.994 kg CO ₂ e

Embodied carbon result - refrigerant leakage only (kg CO₂e)

B1 (Refrigerant leakage during use) + C1 (Refrigerant leakage end of life)	0.000 kg CO ₂ e
--	----------------------------

Assumptions

A1: Material carbon coefficient source	Source = CIBSE TM65 table 2.1
B1: Refrigerant annual leakage rate (%)	0%: Source = CIBSE TM65 table 4.13 type 2
C1: Refrigerant end of life recovery rate (%)	100%: Source = CIBSE TM65 table 4.13 type 2
B3: Materials replaced as part of repair (%)	100%: Source = CIBSE TM65
C4: Percentage of product going to landfill (%)	50%: Source = CIBSE TM65

*Figure reached using 'Mid-Level' TM65 calculator **25 years for project work as decided by Gripple Technical Services

www.gripple.com

TM65-ENG-FTB-370

Gripple's policy is one of continuous development and innovation. We therefore reserve the right to alter specifications, etc. without notice.



Gripple Ltd | The Old West Gun Works | Savile Street East | Sheffield S4 7UQ
Tel 0800 018 4264 Fax 0114 275 1155 Email sustainability@gripple.com